



Trans-Canada Limited

New cross-continent flyer

3½ Days to Vancouver

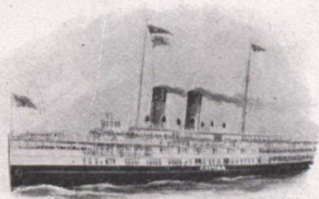
fastest time across the continent
made by any railroad.

Leaves Toronto at 1.45 p.m.
every Tuesday, Thursday and Saturday
during July and August.

Palace Sleepers Only.

Tickets, berth reservations and full particulars at
C.P.R. City Ticket Office, corner King and Yonge Streets.
Phone Main 6580.

Niagara Navigation Co. (Limited)



CONNECTING

TORONTO — NIAGARA FALLS — BUFFALO

6 trips daily (except Sunday). Write for Illustrated Booklet.

B. W. FOLGER, Manager, TORONTO, CANADA

West Shore Railroad

EXCURSIONS TO

New York

THURSDAY, AUGUST 15th.

TUESDAY, AUGUST 27th.

ROUND TRIP FARES

Toronto via Lewiston	- -	\$11.35
Toronto " C. P. R. or G. T. R.	- -	13.35
Hamilton " T. H. & B. or G. T. R.	- -	11.35
Buffalo or Niagara Falls	- -	9.00

TICKETS good going on regular trains
and on SPECIAL TRAIN leaving Buffalo at
10.30 p.m. will be

GOOD 15 DAYS

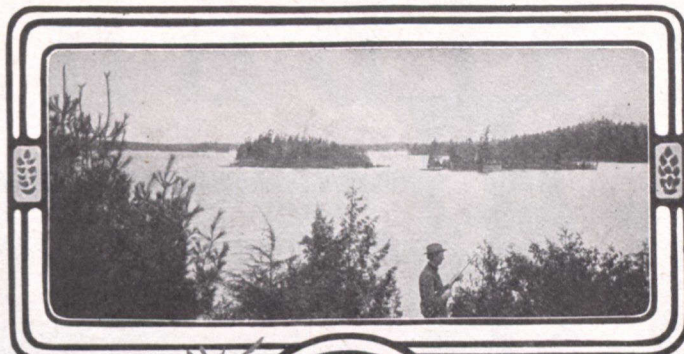
RETURNING INCLUDING DATE of SALE.

TICKETS will also be available for pass-
age, without additional charge, between Albany
and New York on the

HUDSON RIVER STEAMERS.

For full particulars call on or address—

L. DRAGO, 80 YONGE STREET, TORONTO



THE
**LAKE SHORE
EXPRESS**

FAST TRAIN
FOR

MUSKOKA LAKES

Leaves Toronto 10 a.m.

Connecting at Bala Park and Lake Joseph with Muskoka
Nav. Co. Steamers arrive Beaumaris 2.15 p.m., Port
Cockburn 3.00 p.m., Port Sandfield 3.30 p.m., Royal
Muskoka 4.30 p.m.; other points in proportion.

OFFICES:

Corner King and Toronto Sts. and Union Station, TORONTO
Main 5600-5179



"Highlands of Ontario"

The ideal Summer Resort region of America,
including the following fascinating districts:

MUSKOKA LAKES

LAKES SIMCOE AND COUCHICHING

LAKE OF BAYS

MAGANETAWAN RIVER

TEMAGAMI

LAKE NIPISSING AND FRENCH RIVER

30,000 ISLANDS GEORGIAN BAY

ALGONQUIN PARK

KAWARTHA LAKES, Etc.

40,000 SQUARE MILES of
lake, river and island scenery.

1,000 to 2,000 feet above sea level. Fishing—Shooting
—Canoeing—Camping. PERFECT IMMUNITY FROM
HAY FEVER. Splendid train service to all districts via
GRAND TRUNK RAILWAY SYSTEM.

Booklets descriptive of any of the above districts free on
application to J. D. McDONALD, District Passenger Agent,
Toronto, Ontario.

W. E. DAVIS
Passenger Traffic Manager
MONTREAL

G. T. BELL
Gen. Pass. and Ticket Agent
MONTREAL