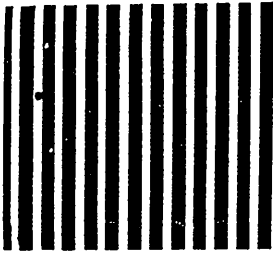
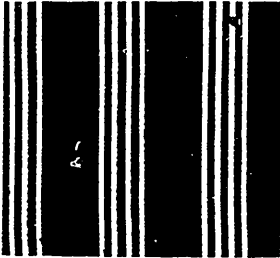


# Ladies' New Shirt Waists.

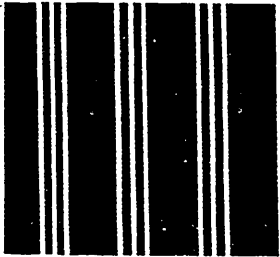
PATTERNS SHOWN ARE REDUCED ONE-HALF.



Pattern No. 1—Black and white.



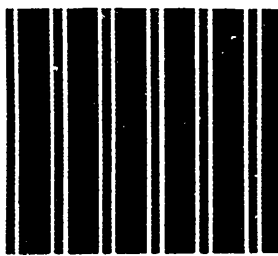
Pattern No. 2—Black and white, pink and white, blue and white.



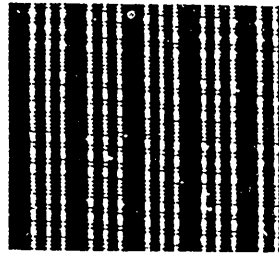
Pattern No. 3—Black and white, pink and white, blue and white.



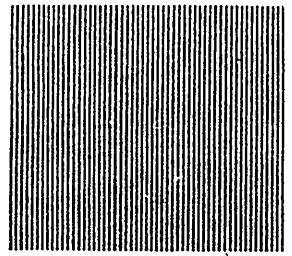
Pattern No. 4—Black and white.



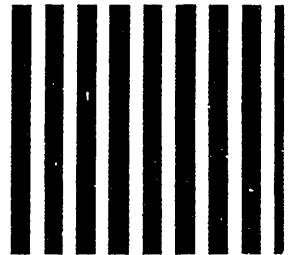
Pattern No. 5—Blue and white.



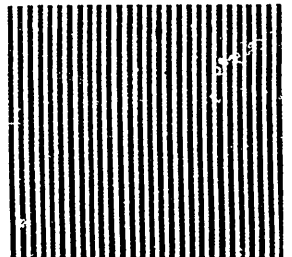
Pattern No. 6—Black and white, Pattern No. 10—Pink and white, navy blue and white, pink and white.



Pattern No. 7—Blue and white.



Pattern No. 8—Black and white.



Pattern No. 9—Blue and white.



For the months of January and February, 1899, we offer this new shirt waist in the stylish striped patterns as shown in the accompanying cuts. This waist is made of fast color American percales, with the new rounded corner standing collar, double-stitched yoke, bound armholes and front buttoned with pearl buttons, sizes 32 to 42 inches. Our Special Price ..... **.50**

In ordering, send bust measure and number of the pattern preferred. It is advisable to make a second choice.

MAIL ORDERS  
FILLED PROMPTLY.

THE T. EATON CO. LIMITED

190 Yonge Street, TORONTO, CAN.