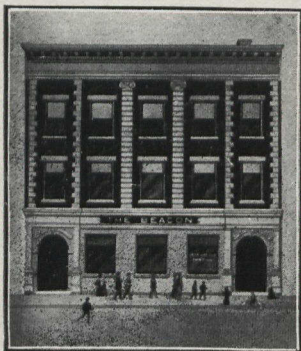


THE STRATFORD BEACON

Weekly : Established 1854.

Daily : Established 1887.



THE BEACON BUILDING
Erected in it's Jubilee Year

DAILY AND WEEKLY

Circulates in one of the best districts in the Western Ontario Peninsula. Circulation guaranteed and sworn to. Any recognized advertising agency will show statement and quote lowest rates.

The Beacon does not sacrifice quality for quantity of circulation. It is a two-cent paper, and gives value for the money—both to readers and advertisers.

W. M. O'BEIRNE
Proprietor

30,000 Circulation.

THE FARMER'S ADVOCATE AND HOME JOURNAL

Is regarded by all to be head and shoulders above all competitors.

We furnish subscribers with the brainiest journal of its kind, and have the confidence of our readers and advertisers alike.

Our subscribers are wealthy, the model farmers in every district; what they purchase, others will purchase likewise. Get after them.

THE WILLIAM WELD CO.

LONDON,

CANADA