

Stanyon Engineering Co.,

402 McKinnon Bldg.

Phone, Main 2177. TORONTO, ONT

Consulting Engineers and ...Buyers' Agents...

When wanting Machinery or Iron and Steel products from the United States consult us.

General Office. - Pittsburg, Pa., U.S.A.

THE STOWE-FULLER CO.

FIRE BRICK MANUFACTURERS

ALL FURNACE MATERIAL

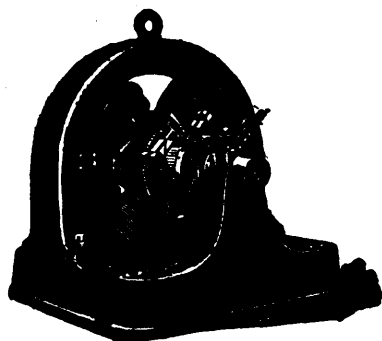
Superior Building
CLEVELAND, O.

SEND FOR
CATALOGUE



Decided improvement. Less friction. Can be changed from a roller to a three-wheel cutter. Extra wheels in the handle. Send for catalog.
TRIMONT MFG. CO., Roxbury, Mass., U.S.A.

FOR SALE



50-Horse Power Induction Motor

7,200 Alternations, 400 Volts, 2-Phase.

Complete with transformers and auto-starter.

T. & H. ELECTRIC CO.,

99-103 McNab St. North,
HAMILTON.

McLachlan Gasoline Engine Co.

LIMITED

115 Bay Street, Toronto, Can.

MANUFACTURERS OF

ELECTRIC LIGHT AND POWER APPARATUS

GASOLINE ENGINES

For Launches, Horseless Carriages, etc

CORRESPONDENCE SOLICITED.

strength, and opportunity is easily afforded of watching the iron and determining when the proper degree of heat has been reached. When making a lap or split weld at the forge no such careful inspection is possible, and hence it is that these welds as a rule are more liable to be defective than the butt weld electrically made.

THE SPARSE DISTRIBUTION OF TIN.—In one of the recent publications of the Geological Survey of Australasia the writer calls special attention to the singular fact—well known to metallurgists though not to the non-expert—that tin is the most sparingly distributed metal in common use. While there is scarcely a country in the world in which gold might not be profitably obtained, or from which it has not been obtained in the past, there are at the present time probably not more than a dozen districts in the world from which tin is obtained. The tin deposits of Cornwall, famed in history as the source from which the Phoenicians obtained their tin supplies, and which have yielded immense quantities continuously down to the present time, are now practically exhausted, and the same may be said of the condition of the ore deposits of Bohemia, Tuscany, Southern Spain, and the Pyrenees.

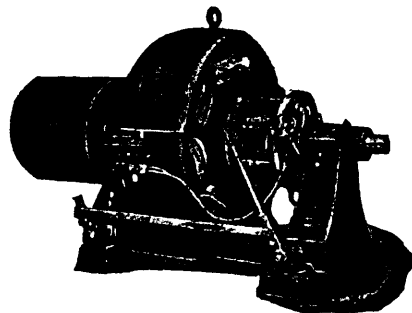
In all the vast area of Asia but two districts are known in which workable deposits of tin exist; namely, the Hunan district of China and the Straits Settlement and adjacent principalities, from the latter of which by far the largest quantity of the metal has been obtained for many years.

Thus far no workable tin deposit has been discovered in Africa. In North America at present there is not a single tin mine in operation, though promising deposits have been located in at least three widely separated localities, viz.: Virginia, Dakota, and California, which, however, proved unprofitable. In Mexico extensive deposits of tin are known to exist in the province of Durango, which one day, when facilities for transportation are provided, will doubtless add greatly to the world's supply. At present, however, they remain untouched. Brazil, Bolivia, and Peru in South America have paying tin ground, but the yield thus far is comparatively small and is confined to the two last-named States. Lastly, Australasia is the source of a considerable supply of tin from lately discovered deposits in Australia and New Zealand. At present the product is only about one-tenth that of the Straits, but it is increasing.

AS TO BROOMS.—Seventy-five delegates of the Broom Manufacturers' Association of the United States and Canada in Chicago began a discussion that it was hoped would result in a horizontal raise of at least 10 per cent. in the price of brooms. The Association, which represents almost 90 per cent. of the broom output of the country, was called to this special meeting for the purpose of getting better prices for brooms, an advance being necessitated, it is explained, by the recent increase in the cost of broom corn.

The Jones & Moore ELECTRIC CO.

ELECTRICAL CONTRACTORS



DYNAMOS, TELEPHONES, SLOW
SPEED MOTORS, MOTORS, SUPPLIES,
DIRECT CONNECTED DYNAMOS.

We manufacture Direct Current Machinery in all sizes and for any purpose.

20 and 22 ADELAIDE W.,
TORONTO.

KERR'S

"WEBER" VALVES

ARE THE GENUINE
VALVES OF THAT
NAME.

ALL OTHERS
ARE IMITATIONS.

BE SURE AND GET
THOSE MADE BY

THE KERR ENGINE CO.

LIMITED

WALKERVILLE, - ONTARIO

CHARLES F. CLARK,
President.

JARED CHITFENDEN,
Treasurer.

Established 1849.

BRADSTREET'S

Capital and Surplus, \$1,500,000

Offices Throughout the Civilized World.

EXECUTIVE OFFICES,

346 & 348 Broadway, New York City, U.S.A.

Correspondence Invited.

OFFICES IN CANADA:

Halifax, N.S.

Hamilton, Ont.

London, Ont.

Montreal, Que.

Ottawa, Ont.

Quebec, Que.

St. John, N.B.

Toronto, Ont.

Vancouver, B.C.

Victoria, B.C.

Winnipeg, Man.

THOMAS C. IRVING, Gen'l Manager Western Canada,
TORONTO.

JOHN A. FULTON, Gen'l Manager Eastern Canada,
MONTREAL.

When writing to Advertisers kindly mention THE CANADIAN MANUFACTURER.