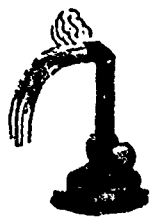


THE
Canada Business College.
HAMILTON, - ONT.
ESTABLISHED TWENTY-FOUR YEARS.
Opens 1st September. Best equipped Business
College in the Dominion. For catalogue and full
particulars, write
R. E. GALLAGHER, Principal.



THE
— IMPROVED —
Model Washer
and Bleacher

ONLY WEIGHS 6 LBS.
Can be carried in a
small valise

Pat. Aug. 2, 1884.
C. W. DENNIS, Toronto.

SATISFACTION GUARANTEED OR
MONEY REFUNDED.

\$1,000 REWARD FOR ITS SUPERIOR.
Washing made light and
easy. The clothes have that pure whiteness which
no other mode of washing can produce. No rubbing
required—no friction to injure the fabric. A ten-
year-old girl can do the washing as well as an older
person. To place it in every household, the price has
been placed at \$3, and if not found satisfactory,
money refunded. See what The Baptist says:
"From personal examination of its construction and
experience in its use we commend it as a simple, sen-
sible, scientific and successful machine, which suc-
ceeds in doing its work admirably. The price, \$3,
places it within the reach of all. It is a time and
labour-saving machine, is substantial and enduring,
and is cheap. From trial in the household we can
testify to its excellence."

Delivered to any express office in Ontario or Que-
bec, charges paid, for \$3.50.

C. W. DENNIS, 218 Yonge St., Toronto
Please mention this paper.

THE CHICAGO AND
NORTH-
WESTERN
RAILWAY.

THE BEST ROUTE AND
SHORT LINE
BETWEEN
CHICAGO,
COUNCIL BLUFFS
and OMAHA.

The only line to take from Chicago or Milwaukee
to Freeport, Clinton, Cedar Rapids, Marshalltown,
Des Moines, Sioux City, Council Bluffs, Omaha and
all points West. It is also the

SHORT LINE
BETWEEN CHICAGO AND
ST. PAUL OR MINNEAPOLIS

And the best route to Madison, La Crosse, Ashland,
Duluth, Winona, Huron, Aberdeen, Pierre, and all
points in the North-west.

It is the direct route to Oshkosh, Fond du Lac,
Green Bay, Ishpeming, Marquette and the mining
regions of Lake Superior.

It is the LAKE SHORE and PARLOUR CAR
ROUTE between CHICAGO and MILWAUKEE.

PALACE SLEEPING CAR on night trains,
PALATIAL DINING CAR on through trains,

BETWEEN
CHICAGO AND MILWAUKEE,
CHICAGO AND ST. PAUL,
CHICAGO AND COUNCIL BLUFFS
AND CHICAGO AND WINONA.

If you are going to Denver, Ogden, Sacramento,
San Francisco, Helena, Portland, or any point in the
West or North-west, ask the ticket agent for tickets
via the

"NORTH-WESTERN,"

If you wish the best accommodation. All ticket agents
sell tickets via this line.

M. HUGHITT, R. S. HAIR,
General Manager, General Passenger Agent.

CHICAGO.
Vassar College, Poughkeepsie, N. Y.
FOR THE LIBERAL EDUCATION OF WOMEN,
with a complete College Course, Schools of Painting and
Music, a complete Library, a Laboratory of Chemistry,
a Museum of Natural History, a Cabinet of Minerals, a
Museum of Art, Library of 15,000 Volumes, ten
Professors, and three hundred students. Ad-
mission free. Students at present admitted to
a preparatory course. Catalogues sent on application.
L. L. CALDWELL, D. D., LL. D., President.

THE LINE SELECTED BY THE U. S. GOV'T
TO CARRY THE FAST MAIL.

**Burlington
Route
C.B. & Q.R.R.**

It is the only line with its own track from
CHICAGO TO DENVER,
Either by way of Omaha, Pacific Junction, St. Joseph,
Atchison or Kansas City.

It connects to Union Pacific with through trains from
NEW YORK, PHILADELPHIA, BOSTON
and all Eastern points. It is the principal line to
SAN FRANCISCO, PORTLAND & CITY OF MEXICO.
It traverses all of the six great States of ILLINOIS,
IOWA, MISSOURI, NEBRASKA, KANSAS, COLORADO
with branch lines to all their important cities and
towns.

From CHICAGO, PEORIA or ST. LOUIS, it runs
every day in two, three or four to three elegantly
equipped through trains over its own tracks between
Chicago and Denver,

Chicago and Omaha,
Chicago and Council Bluffs,
Chicago and St. Joseph,
Chicago and Atchison,
Chicago and Kansas City,
Chicago and Topeka,
Chicago and Cedar Rapids,
Chicago and Sioux City,
Peoria and Council Bluffs,
Peoria and Kansas City,
St. Louis and Omaha,
St. Louis and St. Paul,
Kansas City and Denver,
Kansas City and St. Paul,
Kansas City and Omaha,

For all points in Northwest, West and Southwest.

Its equipment is complete and first class in every
particular, and at all important points interlocking
switches and signals are used, thus insuring com-
fort and safety.

For Tickets, Rates, General Information
regarding the Burlington Route, call on any Ticket
Agent in the United States or Canada, or address
T. J. POTTER, 1st V.P. & Gen. Mgr., CHICAGO.
HENRY B. STONE, Asst. Gen. Mgr., CHICAGO.
FERCEVAL LOWELL, Gen. Pass. Agt., CHICAGO.

**DR. FOWLER'S
EXTRACT OF WILD
STRAWBERRY
CURES
CHOLERA
CHOLERA INFANTUM
DIARRHÆA,
AND
ALL SUMMER COMPLAINTS
SOLD BY ALL DEALERS.**

WHY SUFFER FROM
Sick Headache?
DYSPEPSIA OR INDIGESTION,
WHEN

WEST'S LIVER PILLS

will thoroughly cure you. They do not
gripe or purge, but act very mildly, and
whenever used are considered priceless.
They have proven to be the

**GREATEST BLESSING
OF THE AGE**

to all sufferers from Indigestion, Dis-
ordered Stomach. They are an absolute
and perfect cure. Use them, and be
relieved from your misery. 30 Pills in a
box, 25c. per box, 5 boxes for \$1.

FOR SALE BY ALL DRUGGISTS AND
DEALERS IN MEDICINES.

Beware of Counterfeits and Base Imitations. Gen-
uine wrapped only in Blue, with signature on every
box. Free trial package of these Celebrated Pills
sent to any address on receipt of a 3c. stamp.

JNO. C. WEST & CO.
SOLE PROPRIETORS.
81 & 83 KING ST. EAST, TORONTO, ONT.

TENDERS WANTED.

TO PUBLISHERS.

The Hymnal Committee of the Presbyterian Church
in Canada have prepared the following Hymn Books,
for which they have secured copyright in Canada,
viz.:

1. Hymnal of the Presbyterian Church in Canada.
2. The same with Music, Common Notation.
3. The same with Music, Tonic Sol-Fa Notation.
4. Children's Hymnal of the Presbyterian Church
in Canada, with Music (one part), Common Notation.
5. The same with Music (four parts), Common
Notation.

These books have been approved of by the General
Assembly, and, with the exception of the Tonic Sol-
Fa edition, are already in extensive use throughout
the Presbyterian Church in Canada, the first being
sold in three different editions.

The Hymnal Committee hereby invite tenders for
the exclusive right of printing, publishing and selling
these books in Canada for seven years, from the first
of January 1886 to the end of the year 1892, on con-
dition of paying the Committee a royalty of 10 per
cent to be computed on the retail selling price of the
books.

Further particulars, and information, and forms of
tenders may be had on application to the undersigned,
the Secretary of the Publishing Committee, at Tor-
onto. All tenders to be in the hands of the Con-
vener on or before the first day of November, 1885.
The lowest or any tender not necessarily accepted.

WILLIAM GREGG,

Toronto, 14th September 1885. Convener

LITERARY.

The following productions are from the pen of the
Rev. Dr. Bryce, of Winnipeg, during the past
year, and while chiefly on subjects related to the work
of the Chair of Science and Literature in Manitoba
College, are of general interest:

1. **PRESBYTERIANISM, WHAT IT HAS
DONE AND WHAT IT MAY DO IN THE
CANADIAN NORTH-WEST.** Published by the
Synod of Manitoba. (The Moderator's Sermon on
the opening of the first Synod of Manitoba, July,
1854. Mainly a historic retrospect.)
2. **A PLEA FOR A CANADIAN CAMDEN
SOCIETY.** Published by the Royal Society of
Canada. A plan for the publication of early Cana-
dian books now out of print for the use of histo-
rians and others. The Royal Society has a commit-
tee at work on the subject.
3. **OUR INDIANS.** Published by the Y.M.C.A.
of Winnipeg. A lecture delivered in December last,
and showing some of the causes of the late rising.
4. **COAL.** A Lecture before the C. P. R. Literary
Society of Winnipeg. A description of the Coal
Fields of the North-West.
5. **EDUCATION IN MANITOBA.** Published by
the British Association of Science. A paper given in
full in the beautiful Memorial Volume of the late
meeting. Printed in Montreal.
6. **THE MOUND BUILDERS.** Published by
the Historical and Scientific Society of Manitoba.
Dr. Bryce is an active explorer, and a fortunate dis-
coverer in the Mounds of the North-West. This gives
the result of his personal observations.
7. **THE FIVE FORTS OF WINNIPEG.** Now
being published by the Royal Society of Canada,
Description with maps of Forts Rouge, Gibraltar,
Douglass, Old Fort Garry, and Fort Garry within
the limits of the City of Winnipeg.
8. **THE LAOCOON OF EVOLUTION.** Pub-
lished by the British and Foreign Evangelical Re-
view. A criticism of articles by Herbert Spencer and
Frederick Harrison, in the Nineteenth Century
Magazine, and the grounds given for a Christian
Theism.

The greater part of the above publications can be
had separately from W. D. RUSSELL, Bookseller,
Winnipeg.

PRINTING!

Unequalled Facilities

for the execution of FIRST-CLASS

BOOK, PAMPHLET & JOB

PRINTING,

On short notice and at reasonable
prices.

Large Founts of New Type!

Modern Fast Steam Presses!

Careful & Experienced Workmen!

ESTIMATES FURNISHED ON APPLICATION

PRESBYTERIAN

Printing & Publishing

COMPANY,

5 Jordan Street, - Toronto.

TELEPHONE No. 630.

**ROYAL
DANDELION
COFFEE**

RICH, NUTRITIOUS, AGREEABLE
BREAKFAST BEVERAGE

THE ROYAL DANDELION COFFEE

IMPARTS HEALTHY ACTION TO THE LIVER AND
KIDNEYS, PURIFIES THE BLOOD, AND STRENGTHENS
THE DIGESTIVE ORGANS.

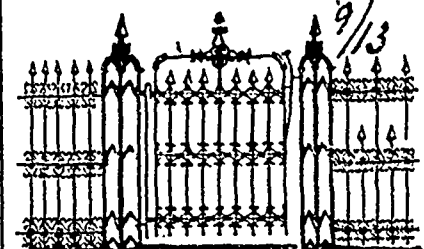
NO FEVERS NOR DISEASE CAN BE WHERE
THESE ORGANS PERFORM THEIR FUNCTIONS.

None Genuine without DANDELION PLANT TRADE MARK.
REGISTERED BY ROYAL AUTHORITY

EVERY PACKAGE BEARS THE SIGNATURE OF THE
SOLE MANUFACTURER, GEORGE PEARCE.

CAN BE OBTAINED AT THE GROCERS
PREPARED AT THE WESTERN CANADIAN COFFEE, SPICE
AND MUSTARD STEAM MILLS

527 YONGE STREET, TORONTO



CHAMPION IRON FENCE,

Made of

Combined, Wrought & Malleable Iron

Most suitable for

**CHURCHES, CEMETARIES OR PRI-
VATE RESIDENCES.**

Send for Catalogue.

TORONTO HARDWARE MFG. CO.

960 QUEEN STREET WEST.

USE A BINDER

Subscribers wishing to keep their copies of the
PRESBYTERIAN in good condition, and have them on
hand for reference, should use a binder. We can
send by mail

A Strong Plain Binder for 75 Cts.

These binders have been made expressly for THE
PRESBYTERIAN, and are of the best manufactured.
The papers can be placed in the binder week by week
thus keeping the file complete. Address,

PRESBYTERIAN PRINTING

and

F. BISHING COMPANY,

4 Jordan Street, Toronto

**MENEELY & COMPANY
WEST TROY, N. Y., BELLS**
Favorably known to the public since
1820, Church, Chapel, School, and other bells; also, Chimes and Peals.

BUCKEYE BELL FOUNDRY.
Bells of Pure Copper and Tin for Churches,
Schools, Fire Alarms, Parades, and ALL
WARRANTED. Catalogue sent free.
VANOUZEN & TIFT, Cincinnati, O.

**McSHANE
BELL FOUNDRY**
Manufacture those celebra-
ted CHURCH and BELL for
Churches, Town Clocks, and
all and circular patterns.
Address
PENNY McSHANE & CO.
Baltimore, Md., U.S.A.

MENEELY BELL COMPANY. 37/32
The Finest Grade of Church Bells. Greatest Expe-
rience. Largest Trade. Illustrated Catalogue
mailed free.

CLINTON H. MENEELY BELL COM-
PANY, TROY, N. Y.

CINCINNATI BELL FOUNDRY CO.
SUCCESSORS TO THE
BLYMYER MANUFACTURING CO.
Catalogue sent free.
Bells Church Bells, and all
NO DUTY ON CHURCH BELLS.

WOMAN WANTED. SATURDAY
for our business in her
locality. Responsible house. ex-
changed. GAY & BROS, 14 Barre St., N.Y.