

**Postage Due**—A stamp used on a letter to indicate that enough postage has not been paid to ensure its delivery.

**Telegraph**—Stamps that are used to prepay telegrams.

**Remainders**—An old stamp that is in a post-office after a new issue has come into use.

**Provincial**—Stamps that are used in only one province.

**Municipal**—A stamp that is to be used in a certain municipality only.

**Rural**—Stamps used in certain districts in Prussia where the regular mail service is not in use.

**Split Stamp**—One that is cut in two or more parts and is sometimes allowed to pass for part of the face value.

**Susse**—French stamps that were perforated without the consent of the government, by the Susse brothers of Paris.

**Carlist**—Stamps that were issued by Don Carlos for the use of his revolutionary followers.

**Tete-beche**—A stamp that has a certain part printed upside down.

**Special Delivery**—Stamps used in the United States on letters that are to be delivered speedily.

**Speculative issue**—An issue of stamps by some government, that are intended (but on the sly) to be sold to collectors. They are generally used for postage.

## Literary Notes.

BY RAYMOND S. BAKER.

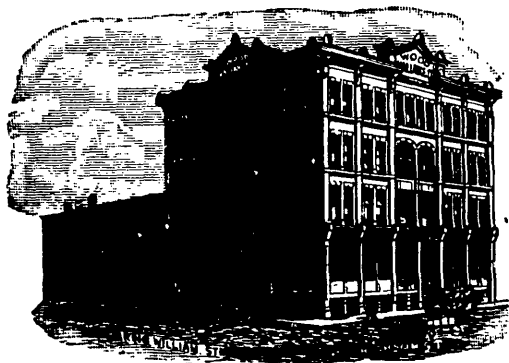
The well-wishers of our literature are rejoiced to see that Mr. Louis G. Quackenbush has again taken up the Philatelic pen. While not contributing so generally or extensively as in former years, his carefully written articles of eminent respectability, appear regularly in MEKEEL'S WEEKLY and the EASTERN PHILATELIST. It is hoped that Mr. Quackenbush will continue to en-

rich the literature of the pursuit which he has so signally served.

THE PHILATELIC JOURNAL OF GREAT BRITAIN has the reputation of being the leader of its class. While this may be true yet from a typographical standpoint, it is certainly the

inferior of a great many American magazines and the literary contents of the latest number is not up to the usual mark.

"STAMPS," now in its second volume and published by Heygate of Rushden, as an English magazine presents a much better appearance. The continued article on "Philately as an Investment" is the freshest and most readable article we have seen for some time on this hackneyed subject. Mr. Grant R. Francis, the writer, takes the stand that the speculator occupies a proper



WOOD VALLANCE & CO'S OFFICES.