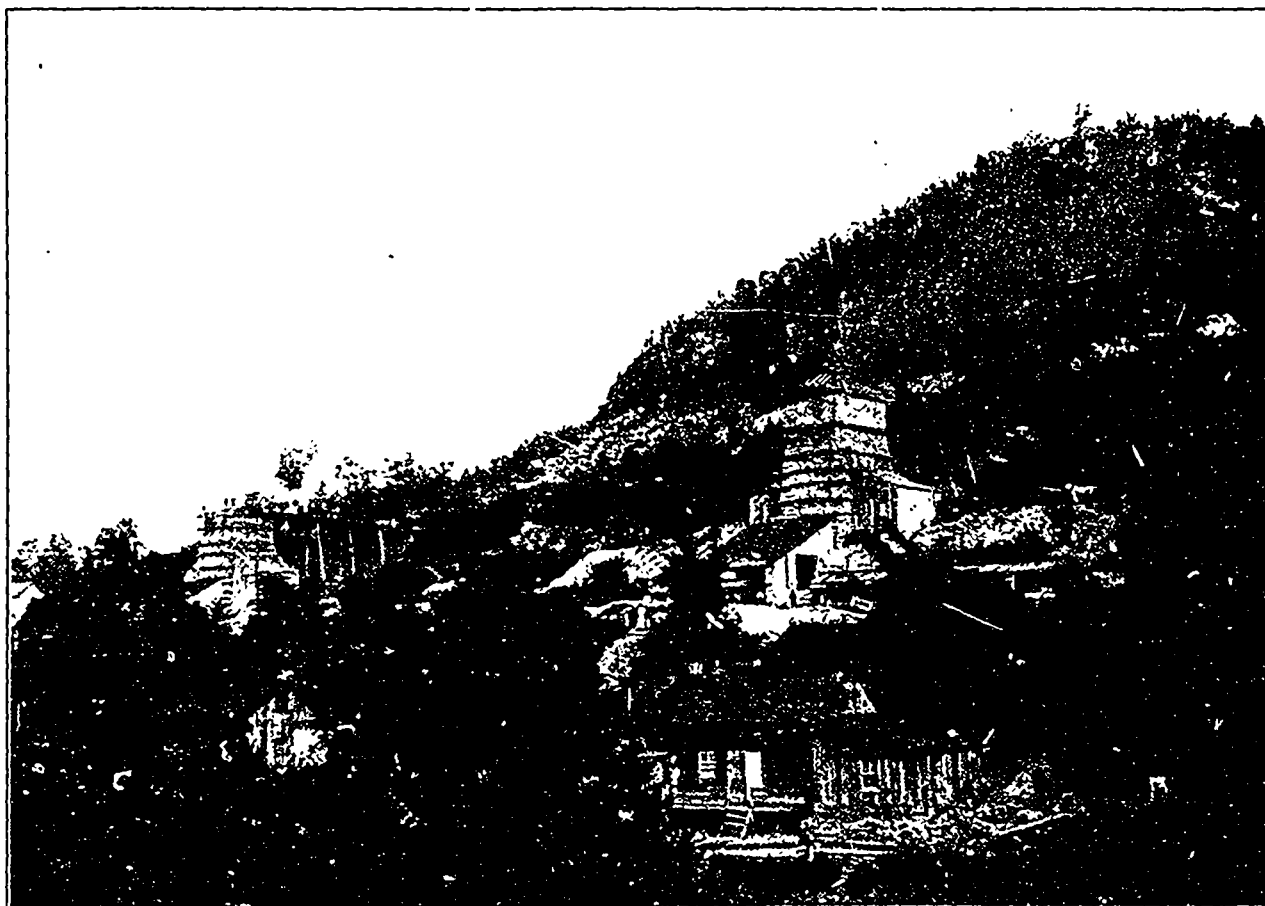


PLANT FOR CRUSHING LIMESTONE AT ANDERDON QUARRIES ESSEX COUNTY.



D. ROBERTSON & CO.'S LIME KILNS, 2½ MILES NORTHWEST OF MILTON. LIMESTONE BEDS FOR BURNING ONLY ARE IN BACKGROUND ON HILLSIDE. HALTON COUNTY.

LIMESTONES OF ONTARIO.

(Reproduced by kind permission of Ontario Bureau of Mines.)