

Painting to protect property gives the opportunity of creating beauty, which adds to value.

For Uniformity, Working Qualities and Wear, Use—

'MATCHLESS' The Paint of Quality

Save the surface and you save all.

jan3,tf

Periodically through the newspapers we read of many unfortunate accidents which occur on the waterfront. Why not have an easy mind and take out a Workmen's Compensation Insurance with our well known Company, who issue adequate covers against liability imposed by the Laws of our country.

We handle all classes of Insurance except Life.

THE LIVERPOOL & LONDON & GLOBE INSURANCE CO., LTD.

CASUALTY DEPARTMENT, MONTREAL.

BOWRING BROTHERS, LIMITED.
AGENTS FOR NEWFOUNDLAND.

jan5, eod

LIPTON'S Orange Marmalade

IN ONE POUND CLEAR GLASS JARS

with Patent Metal Air-Tight Caps.



The Glass shows up the quality of this superior Marmalade—you can see plainly how beautiful and clear it is. A taste proves the excellence of the beautiful golden oranges that are alone used in its manufacture, and which give it that wonderfully clear golden color.

ASK YOUR GROCER for
LIPTON'S MARMALADE!

Put up in 1-lb. Clear Glass Jars, with Patent Metal Caps, easy to open and no wastage. This Jar with metal Cap can

later be used by each housewife for Home-made Preserves with the utmost satisfaction.

LIPTON, LTD.

may19, eod,tf

Cashin's Am. Household COAL
CANNOT BE EQUALLED.

GIVE IT A TRIAL!

\$12.00 PER TON SENT HOME.

SPECIAL PRICES FIVE TON LOTS.

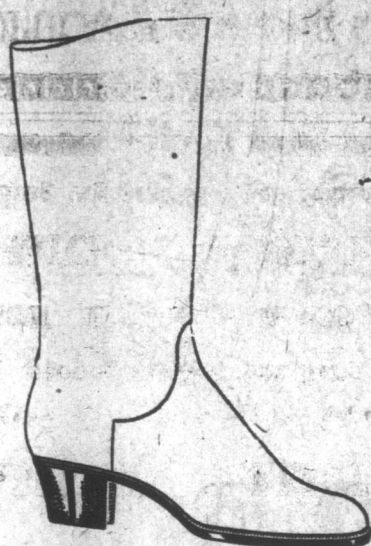
CASHIN & CO. Ltd.

'Phone 1046.

Bishop's Cove.

Don't Say Paper, Say the Evening Telegram.

AFTER ALL IS SAID AND DONE



FISHERMEN! NOTHING TAKES THE PLACE OF LEATHER!

Buy SMALLWOOD'S Hand-Made Tongue Boots. Wellingtons, Tongue Wellingtons, High 3/4 and Low 3/4 Boots.

Manufacturers of Men's, Boys' and Youths'

High and Low Laced Boots. Also, Manufacturers of Miners' & Sportsmen's Boots.

Sold by all reliable dealers from coast to coast. Price list on request.

F. Smallwood

The Sign of the Big Boot, Water Street.

aug17, eod,tf

*Delicious
Golden Pheasant
Sea*

is as

RELIABLE AS IT'S REPUTATION,
gained, after half a century's service to the people of Newfoundland.

FERGUSON, HOLNESS & CO., LIMITED.

J. B. MITCHELL & SON, LIMITED,

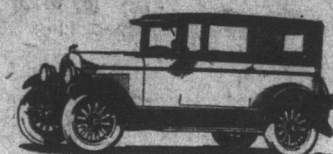
Selling Agents for Newfoundland.

**THE POPULARITY OF OUR COAL LIES
IN THE QUALITY WE DELIVER.**

TRY A TON AND BE CONVINCED.

M. MOREY & CO., Limited

eod,tf



Compare These Notable Chrysler Four Features

First car of its price with the option of hydraulic four-wheel brakes at slight extra cost.

Delivers 38.5 brake test horse-power. Positive force-feed lubrication, giving far more efficient lubrication with no increase in oil consumption.

Unusually sturdy, rugged frame—low center of gravity.

Engine completely isolated from chassis with floating platform spring in front and rubber bushings and pads in rear—no metal to metal contact. No vibration transmitted to body or passengers.

Steering mechanism designed especially for balloon tires.

Distinctive Chrysler beauty and style. Closed bodies Fisher-built.

CHRYSLER SIX - FOUR MARSHALL'S GARAGE.

eod,tf,tf

DULEY'S WEDDING PRESENTS and

PRESENTATION GIFTS.

We have now on exhibition a fine selection of Gifts in China, Silver and Cut Glass. Every piece is of the best material at a reasonable price and in the newest designs:

Cruets, Marmalade Jars, Salad Bowls, Fruit Bowls, Sugar Dishes, Butter Dishes, Cake Stands, 2 Tier and 3 Tier; Salvers, Tea Sets, Entree Dishes, etc.

We invite you to call or write for particulars.

T. J. DULEY & CO., LIMITED.

The Reliable Jewellers & Opticians,
St. John's, Nfld.

"GIFTS THAT LAST."

jan6,tf,tf

GRAVENSTEIN APPLES

NOW IN STOCK

Burt & Lawrence.

4 NEW GOWER STREET

Susu Shipping Co., Ltd.

FOGO MAIL SERVICE.

The S.S. SUSU sails on Tuesday next, Sept. 29th, for the following ports, viz.:

Catalina, Port Union, Greenspond, Valleyfield, Wesleyville, Lumsden, Offer Wadhams, Peckford's Island, Musgrave Harbor, Ladle Cove, Carmanville, Frederickton, Main Point, Gander Bay, Victoria Cove, Horwood's, Stagg Hr., Indian Islands, Seldom-Come-By, Tilting, Joe Batt's Arm, Fogo and Change Islands.

may15, f.a.m,tf

FURNESS LINE SAILINGS

From Liverpool	St. John's to N.P.	Boston to Halifax	Halifax to St. John's	St. John's to Liverpool
SACHEM	Oct. 3rd.	Oct. 8th.	Oct. 13th.	Oct. 18th.
NEWFOUNDLAND	Sept. 22nd.	Sept. 26th.	Sept. 29th.	

These steamers are excellently fitted for cabin passengers. Passengers for Liverpool must be in possession of Passports. Through rates quoted on all cargo for U. S. and Canadian ports.

For rates of Freight, Passage, and other particulars, apply to

FURNESS WITHEY & COMPANY LIMITED.

'PHONE 180.

WATER STREET EAST.

Newfoundland Government Railway

TO THE PUBLIC:

The ECONOMIES which we effect in daily operation and maintenance costs,—tend to make the service profitable to YOU. Are you co-operating by giving us the Monopoly of your patronage?

SAILING NOTICE—S.S. MEIGLE.

S.S. MEIGLE will leave Bowring's Coastal Wharf, 10 a.m. Saturday, September 26th, for ports on Labrador route, far as Hopedale.

CANCELLATION TOURS COVE SUNDAY EXCURSION TRAIN SERVICE.

The public will please note that Sunday afternoon excursion train service to Tor's Cove and intermediate stations, is CANCELLED for this season.

PASSENGER NOTICE—HUMBERMOUTH-BATTLE HARBOUR SERVICE.

Passengers leaving St. John's on express, 1 p.m. Tuesday, September 29th, will connect with S.S. Home, at Humbermouth, for ports on above route.

FREIGHT NOTICE—SOUTH COAST AND ST. MARY'S BAY SERVICE.

Freight for ports on above route, via S.S. GLEN-COE, as per Steamship Directory, accepted at Bowring's Coastal Wharf, Monday, Sept. 28th, from 9 a.m. to 5 p.m.

Red Cross Line

NEW YORK. HALIFAX. ST. JOHN'S

SCHEDULE SAILINGS FOR SEPTEMBER.

FROM NEW YORK	TO ST. JOHN'S
11 A.M.	12 o'clock Noon

September 26th	ROSA LIND	September 26th
September 26th	SILVIA	October 3rd

THROUGH RATES QUOTED TO ALL PORTS. SUMMER PASSAGE RATES NOW EFFECTIVE.

Round trip tickets issued at special rates with six months' stop-over privileges.

For further information, apply to

BOWRING & COMPANY, 17 Battery Place, New York.
G. S. CAMPBELL & CO., HALIFAX, N.S.
HARVEY & CO., LTD., ST. JOHN'S, Nfld.
Agents.

S.S. "HETHPOOL"

Leaves BOSTON for HALIFAX	Leaves HALIFAX for ST. JOHN'S	Leaves ST. JOHN'S for N. SYDNEY	Leaves N. SYDNEY for HALIFAX	Leaves HALIFAX for BOSTON
Tues. 6 p.m.	Sat. 10 a.m.	Wed. 10 a.m.	Fri. 10 a.m.	Sat. 10 p.m.
Oct. 22nd.	Sept. 26th.	Sept. 30th.	Oct. 2nd.	Oct. 3rd.
Oct. 6th.	Oct. 10th.	Oct. 14th.	Oct. 16th.	Oct. 17th.
Oct. 20th.	Oct. 24th.	Oct. 28th.	Oct. 30th.	Oct. 31st.
Nov. 3rd.	Nov. 7th.	Nov. 11th.	Nov. 13th.	Nov. 14th.
Nov. 17th.	Nov. 21st.	Nov. 25th.	Nov. 27th.	Nov. 28th.
Dec. 1st.	Dec. 5th.	Dec. 9th.	Dec. 11th.	Dec. 12th.
Dec. 15th.	Dec. 19th.	Dec. 23rd.	Dec. 25th.	Dec. 26th.

S.S. SABLE I. Passengers, Mail and Freight. On arrival steamer from Boston. Leaves HALIFAX Thursday, Noon. For Charlottetown, North Sydney, St. Paul's, Curling, Corner Brook, Humbermouth, Meadows, Trout River, Some Bay, Lark Harbor, Port au Port, Sandy Point, Codroy, St. Paul's, Neil's Harbor, New Haven, Ingonish, North Sydney, Charlottetown.

S.S. SKIPPER. Passengers and Freight. Leaves HALIFAX, Wednesday, Noon. For North Sydney, St. Pierre, Marytown, Burin, Fortuna, Grand Bank, Belleoram, St. Jacques, English Harbor, Harbor Breton, Galtios, Ramea, Burgeo, Rose Blanche, Channel, Port aux Basques.

SEPT. 29, OCT. 3, 17, NOV. 5, 19, SEPT. 30, OCT. 14, 28, NOV. 11, 25, DECEMBER 9, 23.

Or until Navigation Closes. FARQUHAR STEAMSHIP COMPANIES. (Above dates subject to change without notice.)

sept21,tf

THE CANADA STEAMSHIP LINES, Ltd.

FREIGHT SERVICE

MONTREAL & CHARLOTTETOWN TO ST. JOHN'S, NEWFOUNDLAND.

SAILINGS FOR OCTOBER.

From Montreal:	From Charlottetown
Sept. 26th S.S. HITHERWOOD	Sept. 29th
Oct. 10th S.S. CEUTA	Oct. 13th
Oct. 24th S.S. HITHERWOOD	Oct. 27th

For Freight Space, rates, etc., apply to The Canada Steamship Lines, Ltd., McGill Street, Montreal.

For Freight Space, rates, etc., apply to HARVEY & CO., LTD., St. John's, Nfld. Agents.

sept15, m.w,tf

TORONTO

TO—DETROIT

CHICAGO.

TRAVEL BY NATIONAL LINES

"INTERNATIONAL LIMITED."

Leaves Bonaventure Station, Montreal, at 10:00 a.m. Daily. Direct connection from Halifax or North Sydney by "OCEAN LIMITED."

For Fares, Reservations, etc., apply to

R. H. WEBSTER, General Agent.

may26, eod,tf

TORONTO, Noon. — N. wind and becoming cooler. W. & T. 29.54; ther. 49.