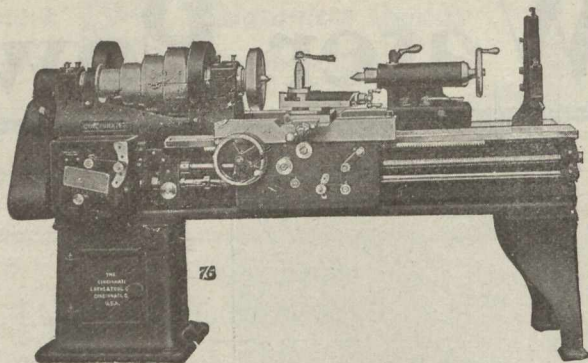


# "FOSS"

Machine Tools  
Small Tools  
Concrete Mixers  
Contractors'  
Equipment

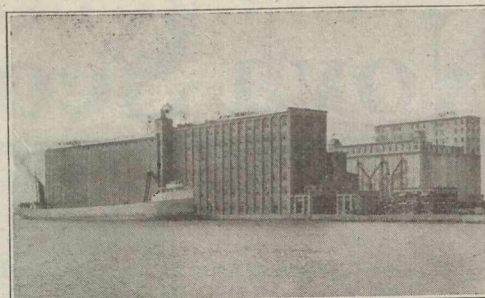


THE GEO. F. FOSS MACHINE & SUPPLY CO.,  
305 St. James St., MONTREAL.

## CANADA'S GREATEST FLOUR MILL.

*This mill  
supplied more  
flour to the  
Allies than  
any other  
mill in the  
world*

Domestic  
Brand  
**KINGS  
QUALITY**



*Other mills at  
Medicine Hat  
Kenora  
Brandon  
Thorold  
Welland  
and Dresden*

Export  
Brand  
**NELSON  
FLOUR**

The Maple Leaf Mill at Fort Colborne, Ont.

—TOTAL DAILY CAPACITY, 17,000 BARRELS.—

**MAPLE LEAF MILLING COMPANY, LTD.**  
HEAD OFFICE - - - - - TORONTO, CAN.

## EMPLOYERS--WHO MAY READ THESE LINES.

Is it not a fact that it would give you great satisfaction to see your employees put aside for a rainy day a part of the increased earnings which you pay them?

Why not therefore do your utmost to instil in them—the wise habit of *THRIFT*? You may rest assured that your thrifty employees will prove to be your best servants.

### The Montreal City & District Savings Bank

Established for their convenience, affords them absolute security.

A. P. LESPERANCE,  
General Manager.

## Interlake Tissue Mills LIMITED

Manufacturers of a full line of White and Colored M. G. Tissues, Brown and Colored Light Weight M. G. Kraft, White and Colored Sulphate Wrap, all grades of Fruit Wraps, Dry Proof Paper. A full line of Toilet Paper, Paper Towels, Paper Napkins, Decorative Crepe Rolls, Lunch and Outing Sets.

*Head Office, 331 Telephone Building*  
**TORONTO**      *Mills at Merritton*

Selling Agents for  
Eastern Canada for  
United States Steel  
Products Company



Exporters of the products of the  
American Sheet &  
Tin Plate Company

**Chemicals, Metals, Oils, Glass, etc.**  
STOCK AND IMPORT

**B. & S. H. THOMPSON & CO., LIMITED**  
MONTREAL

Branches: TORONTO, WINNIPEG, VANCOUVER, NEW GLASGOW, N.S.

## "M.R.M." HORSE SHOES

Mean Good Luck to Horseowners

"M. R. M." Shoes fit easily, because of their natural shape and well drawn heels. Nail holes are punched at the proper angle, clearly cut and accurately spaced the right distance inside the edge of the shoes — which means proper fit.

Rigid inspection is given "M. R. M." Shoes before they leave our factory, so that they can be depended upon.

*Price List and all Information on request.*

**THE MONTREAL ROLLING MILLS CO.**  
MONTREAL, P.Q.

## Mount Royal Milling & Mfg. Co'y. Limited RICE and RICE PRODUCTS

Mills at MONTREAL, QUE.  
and VICTORIA, B. C.

**D. W. ROSS CO'Y.**  
Agents  
MONTREAL

### TELEPHONES:

Contracting Department - - Vic. 1534  
Order and Lumber Department, Vic. 1533

**The James Shearer Company,**  
Limited  
GENERAL CONTRACTORS  
DEALERS IN  
Lumber, Timber, Beaver-Board, Shingles,  
etc., etc.

225 St. Patrick St. - Montreal