

SECTION XI.

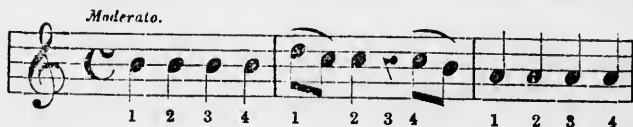
ON COUNTING AND BEATING TIME.

Q. How is the time of a musical composition to be counted?

A. In various ways, according to the number of parts contained in each measure, also according to the speed of the movement.

Q. In common time, marked **C**, how is the time counted?

A. The quarter (*crotchet*) being the measure note, generally four parts are counted in each measure.

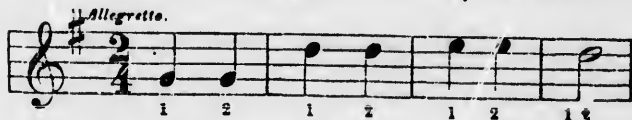


However, in a slow movement, it is better to subdivide each part, and to count eight eighth notes (*quavers*) in each measure.



Q. How do you count half common time marked **2**?

A. Generally two quarters (*crotchets*) in a measure.



However, in a slow movement it is better to count four eighths (*quavers*).