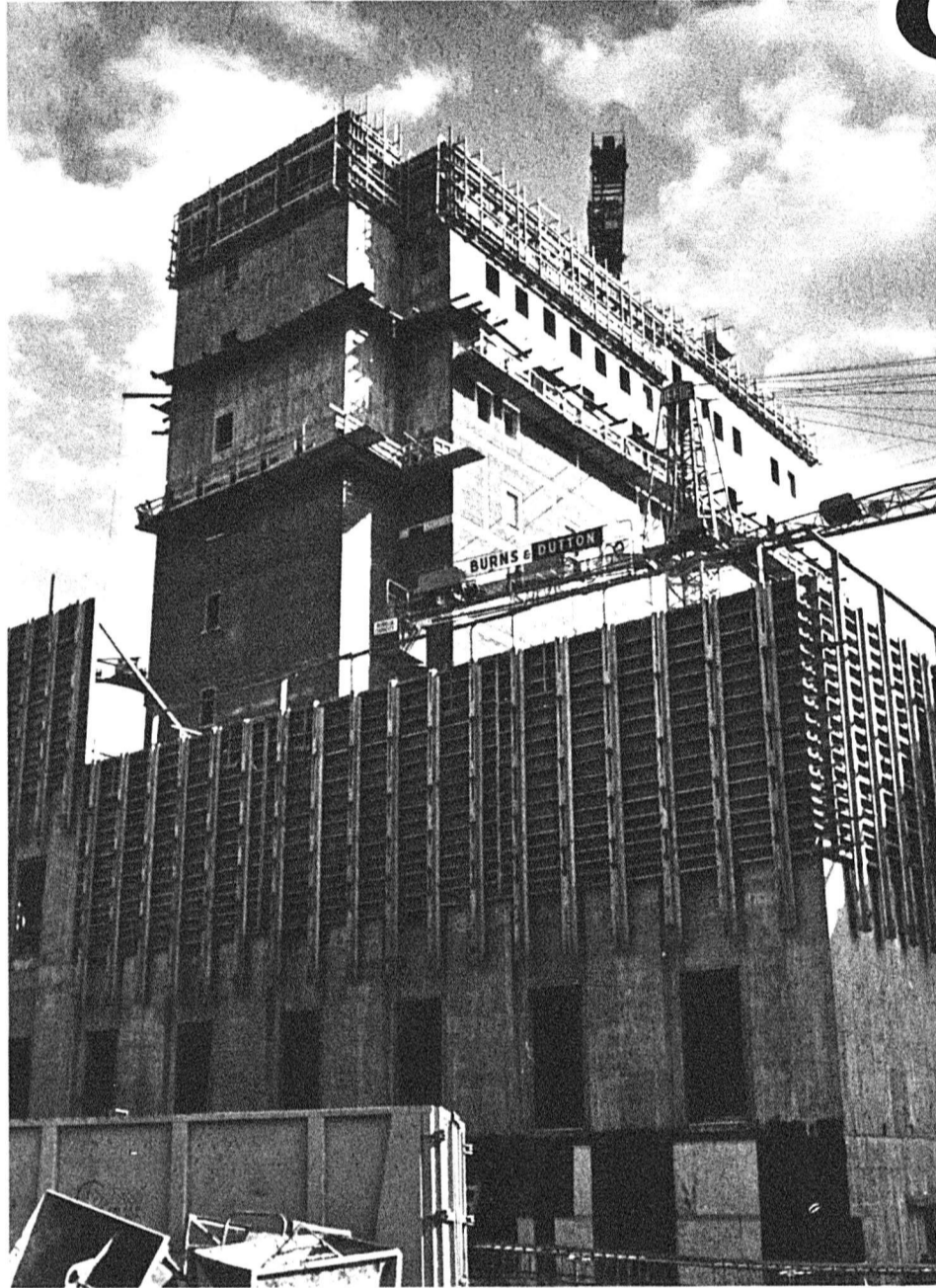


# biological



*Photos and story*

*by Glenn Cheriton*

If you stand in the quad you can see it towering over the physics building. It dominates the university profile as seen from the north.

"It" is the University of Alberta Biological Sciences Centre. At 585,000 square feet it will be the largest building on campus when it is completed in 1969.

The building is unique in more ways than size. It has given the university more than its share of trouble. Future use will show whether it will be an expensive mistake or a valuable addition to the campus.

The building will be the last on campus to be designed by the provincial government's Department of Public Works. It will also be the last of its kind on campus. The design, begun in 1962, aims to satisfy the needs of the biological sciences departments for the next few years.

Now buildings are planned by the university's campus planning and development offices and are designed by private architects. The present policy is to design buildings which will be used by a variety of departments, rather than ignoring the needs of most departments while building for one.

Bids for the bio-sci building, tendered in July, 1966 shocked the university and the provincial government. The lowest bid of \$24,179,500 submitted by Poole Construction and Burns and Dutton Construction as a joint bid was \$6 million over DPW estimates.

In an unprecedented move, the provincial government rejected the bid.

The structure was redesigned by DPW and broken up into four phases. Phase IV, a large and two small lecture theatres, was later cancelled. Phase II was broken down into two parts and each of the phases was bid separately.

Phases, costs and companies are as follows: phase I, \$6,036,000, Christiansen and MacDonald; phase II, \$5,497,200, Universal Construction; phase IIa, \$2,281,339; Alta-West Construction; phase III, \$2,313,000, Burns and Dutton.

Add to this \$488,000 for control and co-ordination and at 16.6 megabucks you have the most expensive building on campus.

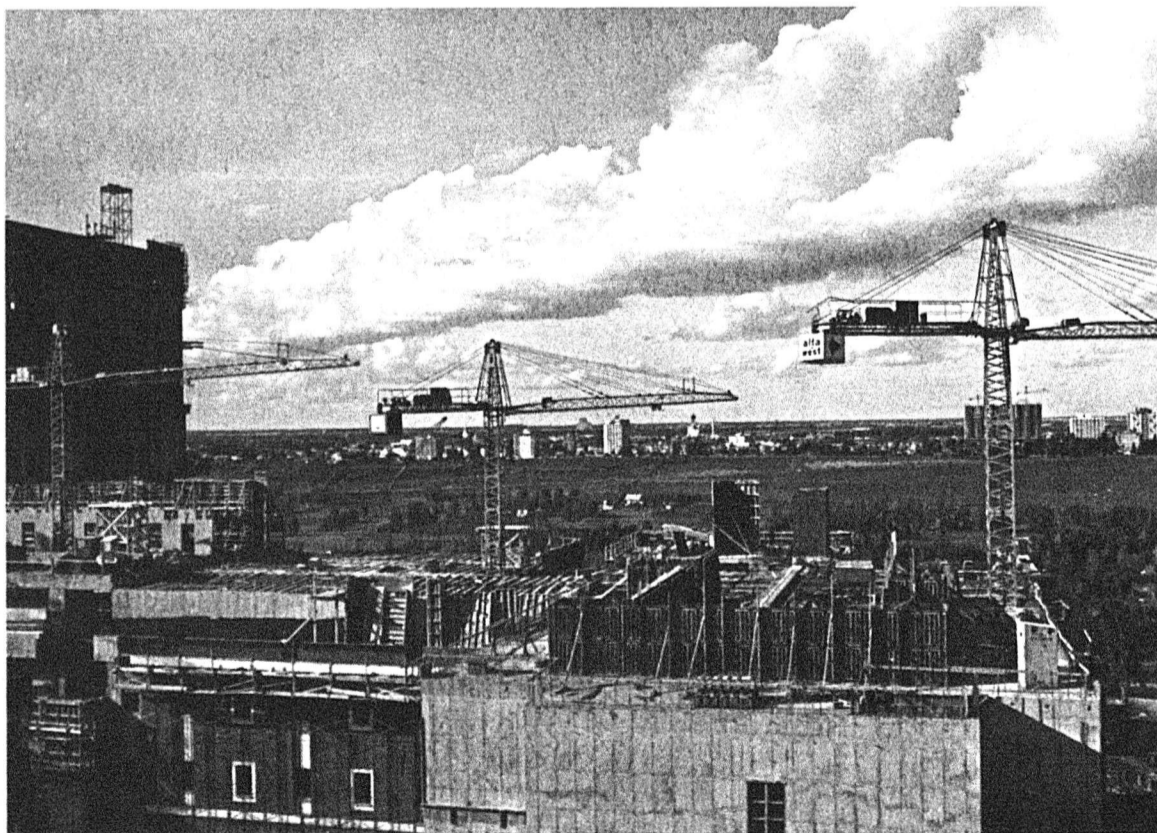
This price, unlike the 24.6 megabuck figure, does not include expensive fixtures such as laboratory equipment which will eventually raise the cost of the building close to the 21 million mark. The equipment is under separate contract.

Originally scheduled for completion in 1967, the building was delayed for a year while the planning was redesigned for phases and the project rebid. Construction delays postponed the project completion another year.

The cost of the building can be attributed to the extensive facilities which it will house.

Six interconnected sections make up the complex. Each of five sections houses one of the departments of Zoology, Botany, Genetics, Microbiology and Psychology. The center section contains labs and overflow space for the biological and other departments.

The other departments will move out as space is found for them elsewhere.



*biologicalsciencesbiologicalsci  
encesbiologicalsciencesbiologi  
calsciencesbiologicalsciencesb  
iologicalsciencesbiologicalscie  
ncesbiologicalsciencesbiologic  
alsciencesbiologicalsciencesbi  
ologicalsciencesbiologicalscie*