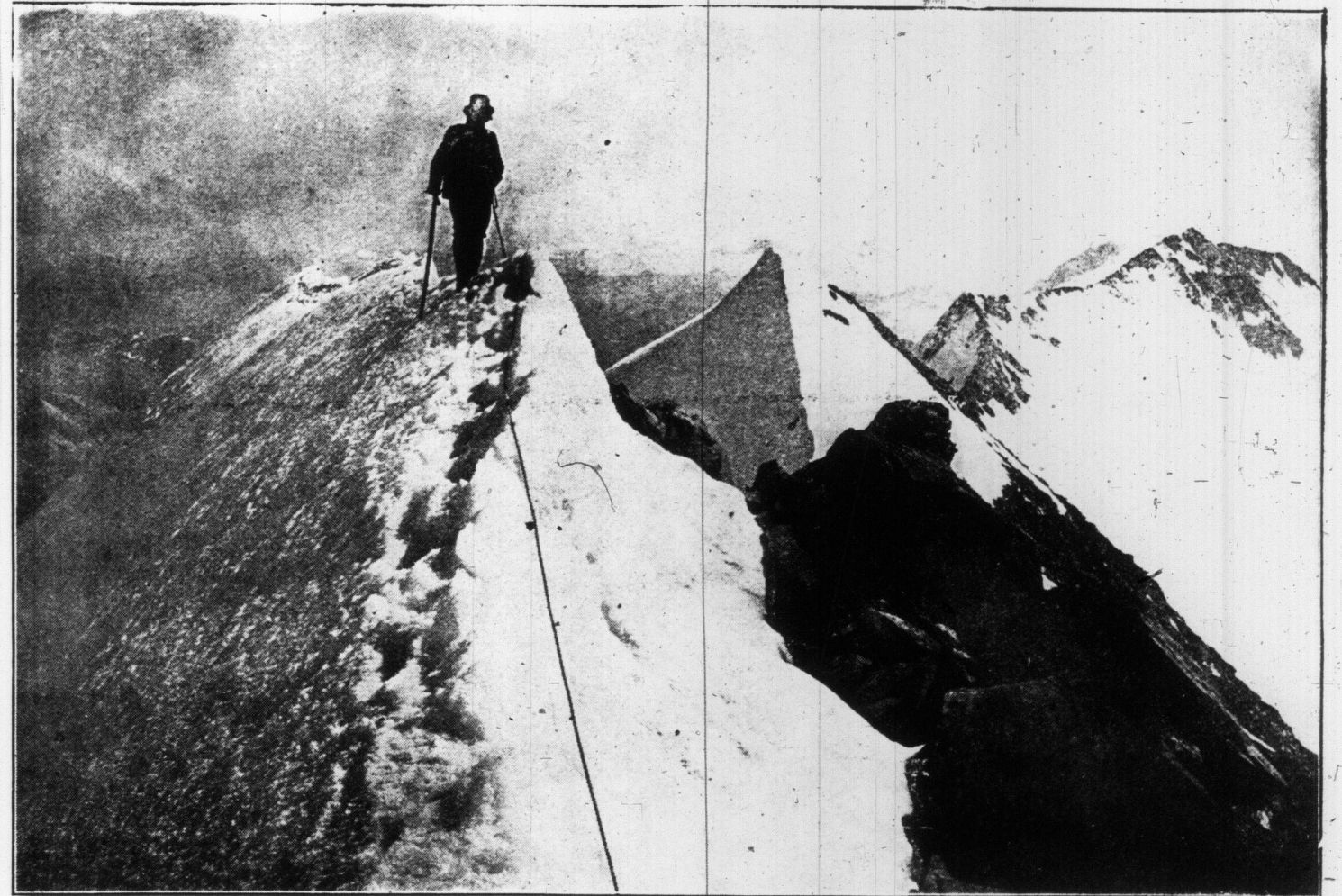




STUDENTS AND STAFF OF ST. MICHAEL'S COLLEGE.



CLIMBING THE WETTERHORNE, ONE OF THE MOST DANGEROUS ASCENTS IN THE ALPS.



TWO HIGHEST PEAKS IN THE ALPS. GIPFELGRATE DER BELLA VISTA, 3900 METRES AND BERN-  
INAGEBIET, 3912 METRES, NEAR ENGENDAN.



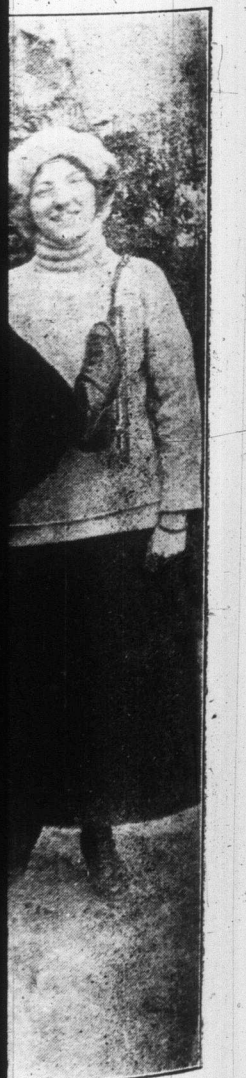
A BOY JUMPING ON SKIS IN DAVOS, SWITZERLAND.



SKI JUMPING IN SWITZERLAND. TORLIEF RHUDSEN MAKING A SPRING OF 41 METRES.



FIANCEE, PRIN-  
CE OF EMPEROR  
ED-WHILE TAK-  
ING IN BERLIN.



DALE PARK.