

Expanse of wings about three-fourths of an inch.

Colors: Front wings, rusty brown, with white and leaden-hued markings crossing the wings. Hind wings, greyish brown.

The figure shows the chrysalid magnified, also the larva, and its manner of working in the branches, with the effects produced in the injury and disfigurement of the tree. (See Fourteenth Annual Report.)

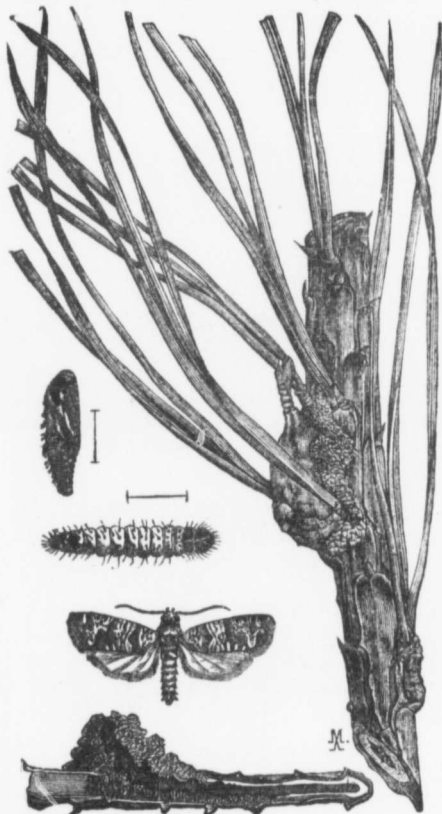


Fig 22.

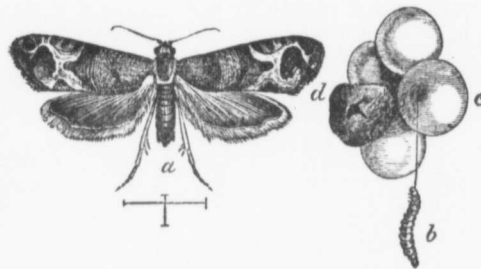


Fig. 23.

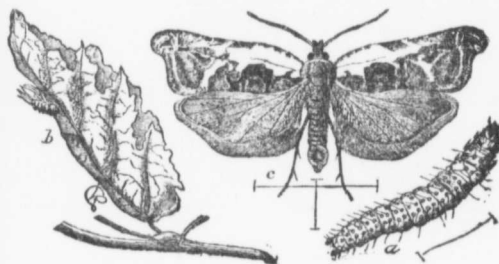


Fig. 24.

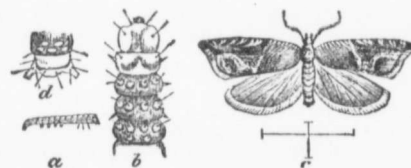


Fig. 25.

Eudemis Hub. *Penthina* Fitch. *botrana* Schiff. *vitivorana* Pac. *viteana* Clem. *Eudemis botrana*, Schiff. The Grape berry moth. Fig 23.

Expanse of wings about half an inch.

Colors: Front wings dull bluish of different shades with a metallic lustre. Hind wings, dull brown; an introduced species. (See Thirteenth and Fourteenth Annual Reports.)

Phoxopteris Tr. *nubeculana* Clem. *Phoxopteris nubeculana* Clem. The Apple-leaf sewer. Fig 24.

Expanse of wings about half an inch.

Colors: Front wings white with brown markings; hind wings light gray.

I have taken this moth only in the woods, but I do not find it so generally abundant as some of its congeners which have not yet been reported as injurious. It seems to have found the apple leaf quite to its liking, and the conditions in the orchard favorable to its increase.

Phoxopteris
Expanse

Colors: Dusky. Antennae

Aspidi
splendorifer

Colors: Spots and st

a shows
illustrates the
cross lines be

Coleoph
Riley. The

Expanse

Colors: brown. The
of the leaf de
desert the lea
the winter.
about, feeding
the beginning