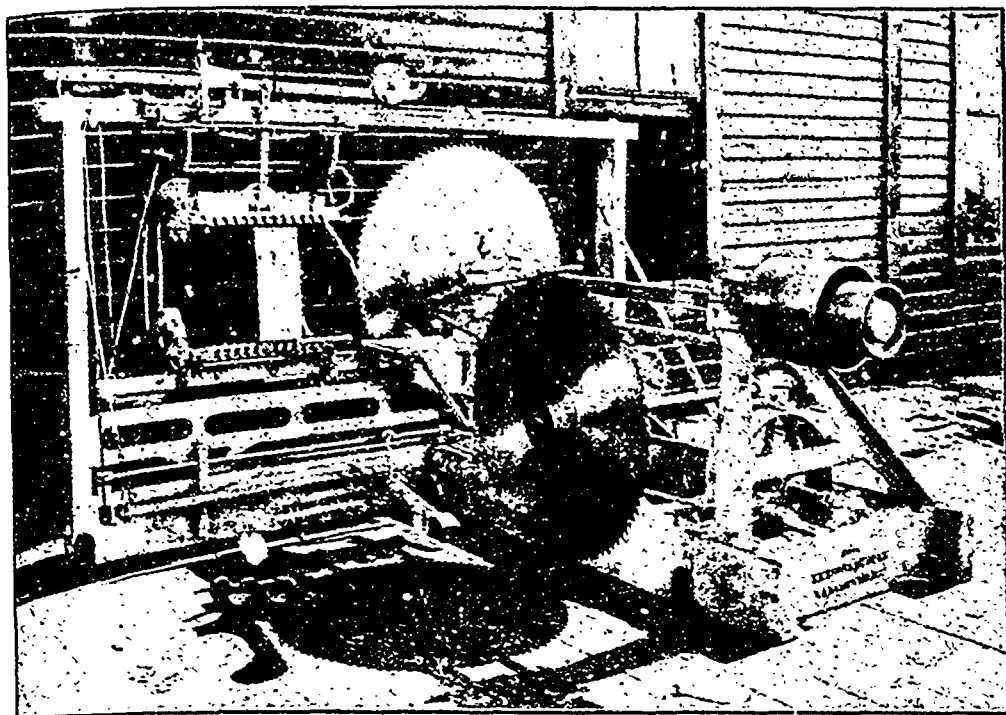


UPRIGHT SHINGLE MACHINES

MAY LOOK ALIKE



BUT

here is our machine with several real

PRACTICAL IMPROVEMENTS.

You can see some of them in this cut, but there are others we should like to tell you about.

See How the Carriage is Built

Lots of room for the wide blocks and it won't jump at the end of the stroke either.

Our friction is another improvement, which along with the several other points we would like to show you, have secured us several orders after careful comparison with other machines.

A GOOD MACHINE

Manufactured
by

LETSON & BURPEE, Vancouver, B. C.

The FRED ROBINSON LUMBER COMPANY, Limited

REVELSTOKE, BRITISH COLUMBIA

Mills at : Revelstoke, B.C.

Comaplix, B.C.

Wigwam, B.C.

MANUFACTURERS OF ALL KINDS OF

Cedar Lumber, Lath, Shingles
Mouldings, Split and Sawn Posts
Fir, Pine and Spruce Dimension, Flooring, etc.

Our XXX Shingles a Specialty. Equal to any on the market.

Terms and Price Lists to Dealers on application to the Company's Head Office at
Revelstoke, B.C.