

**PRACTICAL EDUCATION**

Is the demand of the times.

**PRACTICAL SCHOOLS**

Of Business and Shorthand are those of the M. B. C.

**PRACTICAL STUDENTS**

Are enrolling now. They will have a handicap on all others.

SEND FOR THE PRACTICAL SYLLABUS OF 1901 ... TO ...

**Maritime Business College,**  
HALIFAX, N. S.  
KAULBACH & SCHURMAN, PROPS.

**CHEMICALS**

... AND ...

**CHEMICAL APPARATUS**

SUPPLIED TO SCHOOLS AND TEACHERS ON FAVORABLE TERMS.

**BROWN & WEBB,**  
Wholesale Druggists, HALIFAX, N. S.

**SPECIMENS!**

Of Minerals, Woods, Characteristic Products, Geographic Photographs, and Valuable illustrative material from nearly all parts of our continent can be secured FREE in exchange for specimens from your own locality.

**COLLECTIONS MADE BY EXCHANGE**

especially if pupils take part, have a new interest which the old specimens cannot create. Superintendents, principals, and teachers desiring to increase or renew their collections, and willing to make exchanges, should join our organization at once. Besides the privilege to make exchanges, each member receives, free of charge, the quarterly

**BULLETIN OF THE AMERICAN BUREAU OF GEOGRAPHY**

our hundred-page illustrated geographic magazine for teachers. Its contributors come from every institution in our country in which geographic work of importance is accomplished. The issues of 1901 will bring educational and scientific articles of great value for class and field instruction. A finely illustrated series on the geography of North America is being contributed by eminent geographers and geologists and will be of exceptional value to every progressive teacher and student.

**THE OFFICERS OF THE BUREAU ARE:**

- EDWARD M. LEHNERTS, *State Normal School, Winona, Minn.*
- JAMES F. CHAMBERLAIN, *State Normal School, Los Angeles, Cal.*
- JOHN A. DRESSER, *St. Francis College, Richmond, Quebec.*
- J. PAUL GOODE, *University of Chicago.*
- ROBERT T. HILL, *United States Geological Survey.*
- WILBUR S. JACKMAN, *Chicago Institute.*
- CHARLES F. KING, *Dearborn School, Boston, Mass.*
- HENRY MCCORMICK, *State Normal University, Normal, Ill.*
- CHARLES T. McFARLANE, *State Normal College, Ypsilanti, Mich.*
- JACQUES W. REDWAY, *Geographer, Mt. Vernon, N. Y.*
- H. JUSTIN RODDY, *State Normal School, Millersville, Pa.*
- RALPH S. TARE, *Cornell University, Ithaca, N. Y.*
- PHILIP EMERSON, *Cobbet School, Lynn, Mass.*
- E. R. SHEPARD, *Official Photographer, Minneapolis, Minn.*
- G. P. RECLUS GUYOU, *Geographer, Edinburgh, Scotland.*

Applicants for membership should indicate whether they can exchange photographs or specimens from their localities, or whether they desire to receive the BULLETIN only. Annual membership fee (including magazine) is \$1.00. Address

**THE AMERICAN BUREAU OF GEOGRAPHY,**  
543 EAST EIGHTH STREET, WINONA, MINN.

**University of New Brunswick.**

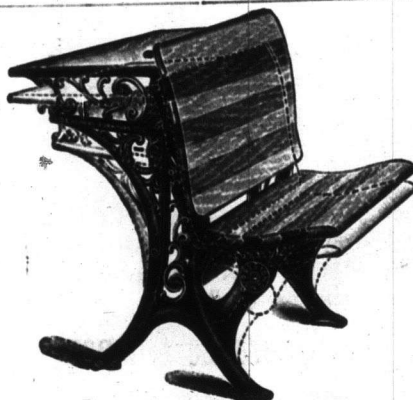
THE next Academic year begins September 27th, 1900, when Fourteen County Scholarships will be vacant. These Scholarships (value \$60 each) will be awarded on the results of the Entrance Examination to be held July 3rd, at all the Grammar School centres. To candidates who hold a Provincial School License of the First Class an Asa Dow Scholarship (value \$150) will be offered in competition in September. The Departments of CIVIL AND ELECTRICAL ENGINEERING are now open to properly qualified students.

Copies of Calendar containing full information may be obtained from the undersigned.

STEPHEN M. DIXON, M. A., BURSAR OF THE UNIVERSITY, FREDERICTON, N. B.

**OUR "BALL BEARING" SCHOOL DESKS**

Stand to-day Above Criticism—The Standard of the World.



THE B. B. AUTOMATIC DESK.

Order Goods, conscious of the fact that you will get the best at the lowest figure—no matter where or who you are.

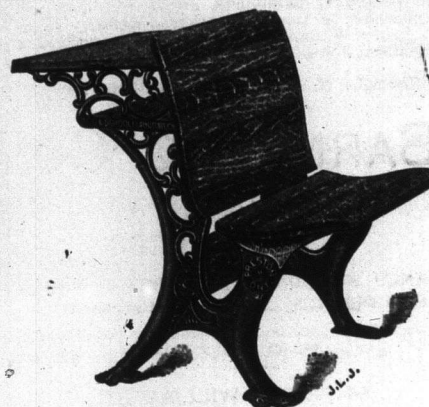
**The Canadian Office and School Furniture Co., Ltd.**  
PRESTON, ONTARIO.

They were the only desks selected by the Government for the Canadian Educational Exhibit at the Paris Exhibition. We have for the sixth time been awarded the contract for desks for the TORONTO PUBLIC SCHOOLS, amounting this year to \$10,000.

During the last two years we sold over 28,000 of these desks, supplying in Canada about three fourths of all the desks required during that time.

These are noiseless desks, whose beauty and honesty of construction place them at once above criticism, and make them the desk above all desks. They have imitators, true, but no equals.

Awarded the Silver Medal, the highest award given on School Desks at the Paris Exposition. Write to-day. Send for Circulars.



THE BALL BEARING DESK.