



CONCRETE PAVEMENTS

**ARE HERE
TO STAY.**



Kahn Steel Expansion Joints

INCREASE THE LIFE OF CONCRETE PAVEMENTS.

WRITE FOR INFORMATION.

Concrete Bridges, Retaining Walls, Silos and Buildings are strongest and most economical when reinforced **ACCORDING TO THE KAHN SYSTEM.**

OTHER PRODUCTS. Hy-Rib—for Concrete Walls, Partitions, Floor and Roof slabs. Rib Metal—for Concrete Sewers, Floors, etc. Trus-Con Chemical Products—for Waterproofing and finishing concrete. Kahn System Sash—for Strength, Fireproofness and Maximum Light. All Sizes of Lights and Ventilators.

LET US QUOTE YOU

TRUSSED CONCRETE STEEL Co.

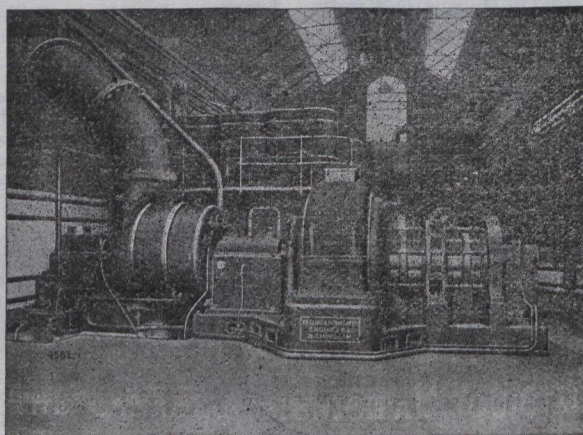
OF CANADA, LIMITED

HEAD OFFICE AND WORKS, - WALKERVILLE, Ont.

BRANCHES: 23 Jordan St., Toronto. Coristine Building, Montreal. Union Bank Building, Winnipeg. Hutchinson Bldg., Vancouver. Chronicle Bldg., Halifax.

BELLISS & MORCOM ENGINE AND EXHAUST TURBINE PLANTS FOR MUNICIPAL USE

INCREASE THE CAPACITY
OF YOUR PLANT 50% BY
INSTALLING AN EXHAUST
TURBINE WITH CON-
DENSER. . . .



A BELLISS RECIPROCAT-
ING ENGINE COMBINED
WITH AN EXHAUST
TURBINE GIVES UNPAR-
ALLELLED ECONOMY. . .

**RECIPROCATOR AND EXHAUST STEAM TURBINE
DARLINGTON CORPORATION**

**MANUFACTURED BY MESSRS. BELLISS & MORCOM
BIRMINGHAM, Eng.**

REPRESENTED BY

LAURIE & LAMB

211-212 BOARD OF TRADE

MONTREAL