

east end will divide it from the kitchen and fruit garden, and a generous shrubbery plantation screens it from the adjacent property belonging to Mr. Baker. Herbaceous borders have been planted on the south terrace by the house and should give a pleasing note of color against the rough east walls. The main herbaceous borders, however, run along the northern boundary of the property.

Unfortunately the only illustration in this article, showing a view of the garden, was taken when the grounds were still under construction and in a very incomplete condition.

In the planning of both the above properties the closest collaboration was maintained at all times between the Architect, Mr. F. H. Marani, and the Landscape Architects, Messrs. H. B. and L. A. Dunington-Grubb. The result has been that the greatest economies have been effected in the division of the property together with increased convenience, pleasure and comfort in the use of both house and grounds.

Both houses are planned so that the entrance front and the garden front are on different sides of the house.

In the Mason house, the garage, ice house, tool room and chauffeur's bedroom are grouped with the house, with an archway between the garage and ice house. This makes an interesting feature of the entrance, and gives a protected way from the house to the garage and ice house. It also provides shelter for an extra car if necessary.

The house is built of hollow tile, stuccoed, with the base, verandah posts and chimneys of dark red stock brick. The roof is covered with shingles dipped in Solignum.

The interior is finished in whitewood and birch and stained dark brown.

The Baker house is a frame house with stucco on metal lath to the tops of the ground floor windows, and above that wide clapboards stained with Solignum.

Hardening Concrete

Experiments by the United States Bureau of Standards to develop a method of accelerating the hardening of

concrete, especially when it is to be used in wet or damp situations, have shown that 4 per cent. of calcium chloride added to the mixing water increases the strength of concrete at the age of one day 100 per cent. or more. In some cases in two days the strength equalled 75 per cent. or more of that normally attained in one month.

Preliminary work on the development of the Bridge River power site near Lillooet, B.C., is being carried on. The development will entail an expenditure of \$30,000,000; the head will be 1,600 feet and 400,000 horse-power will be available.

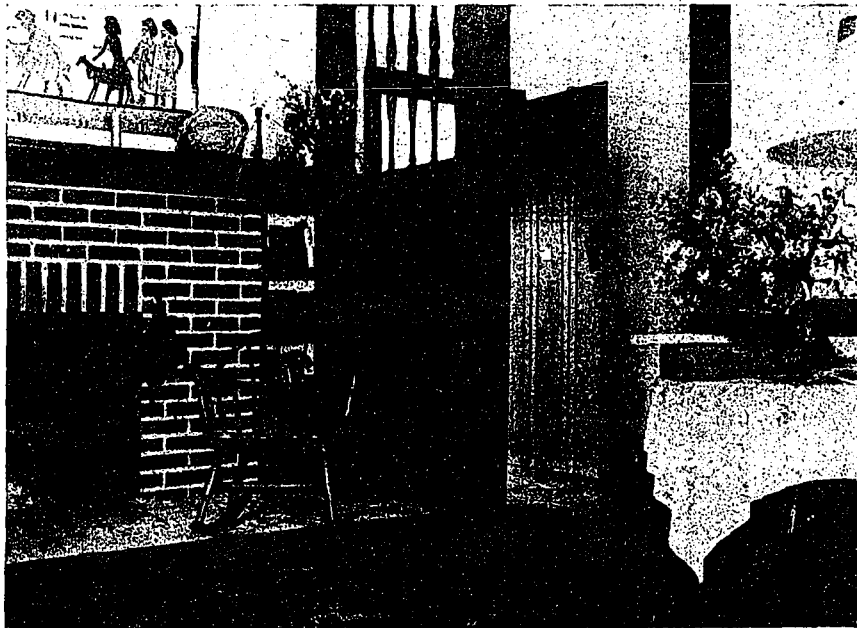
Will meet in London

Association of Contractors'

The Mason the United States and Canada, which recently met in convention at Detroit, Michigan, has voted to hold next year's meeting at London, Ont.



DINING ROOM: MASON HOUSE.



DETAIL OF FIREPLACE AND DOOR: BAKER HOUSE.