

SAVE FUEL

—BY—

COVERING

—YOUR—

Steam Pipes,
Boilers

AND ALL

Heated Surfaces

WITH—

MINERAL
WOOL

Sectional Covering.

—BEST—

Fire-proof Non-Conduc-
tor at present known.

EASILY APPLIED.

Asbestos Goods

OF EVERY DESCRIPTION.

CANADIAN
MINERAL WOOL CO.,
LIMITED.

118 BAY STREET,
TORONTO.

MILLINERY FASHION NOTES.

For every-day wear quills and wings still retain favor, says an exchange.

Velvet caps, coats, costumes, combinations and trimmings will be worn for months to come and in some guises during the entire season.

Light shaded glace velvets and moires will be used for trimmings on spring costumes.

Soft finished tulle and dotted effects rival black touches and changeable colorings.

The Eton and Russian jackets come up again among the season's modes for popular favor.

A round waist with a coat skirt belted on makes one costume answer for both house and street.

Paniers, slashed skirts and draperies will be all features of the spring season's gowning, without usurping the place of the still highly popular plain round skirt.

The half-circle skirt falling in godet pleats remains the favorite, and is cut either in one piece or in five gores as preferred.

The spring hats do not show especial newness of design, but are suggestive of pretty trimmings, and bid fair to gratify to the full lovers of ribbons, flowers and lace.

FASHION NOTES.

Fuchsia is a shade much in use, and is seen in velvet shading to green.

Collarettes of scarlet silk worked on the edge with white, ecru or pale blue are worn above black bodices.

A certain tint of red, which is neither light nor dark, but which still is warm, is found in a shaggy cloth much used this season for wraps for girls.

Skirts show the five, seven and eight-gored and the overskirt; as well as the pretty design with circular ruffles over which the skirt droops in a graceful way.

The cape remains the favorite wrap for the winter, and probably will continue so throughout the spring, notwithstanding that a new impetus seems to have been given to jackets.

Braids show a great deal of white with the black or dark tints. A rich braid in black shows balls alternating of black and white satin, and forming curves on long strands.

A new finish given to the wrists of long mutton leg sleeves consists of a ruffle sewed to the end of the sleeves. This is not a gather ruffle, but is a circular frill made from a square of about seven inches by rounding off the corners. A round hole is cut in the middle to fit the sleeves. It is made double, and is stitched to the sleeve without fullness.

The New Jersey Match Co. have decided to establish a branch at Ottawa.

W. J. STEIN,

Chartered Accountant and Auditor,

513 COLUMBIA ST., NEW WESTMINSTER.

—AND—

P. O. Box 636, VANCOUVER.

ALLICE & AULT,

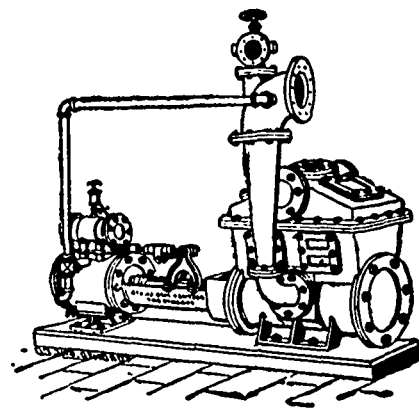
WHOLESALE

Produce and Commission
Merchants.

75 WHARF STREET, VICTORIA.

SOLE AGENTS

Clover Leaf Brand of Cream-
ery Butter which was awarded
the medal and diploma at the
World's Fair, Chicago, 1893.



ONE OF OUR

Independent
Condensers
and
Air Pumps
will help
Profits.

NORTHY M'FG CO., LD.,

TORONTO, ONT.,

FOR PARTICULARS,



For information and free Handbook write to
MUNN & CO., 361 BROADWAY, NEW YORK.
Oldest bureau for securing patents in America.
Every patent taken out by us is brought before
the public by a notice given free of charge in the

Scientific American

Largest circulation of any scientific paper in the
world. Splendidly illustrated. No intelligent
man should be without it. Weekly, \$3.00 a
year; \$1.50 six months. Address MUNN & CO.,
PUBLISHERS, 361 Broadway, New York City.