

**HARVEY HUBBELL**  
 Machinery and Tool Mfr.  
 Improved Tapping Machines  
**SCREWS**  
 Machine Screws for electrical purposes.  
 Sample box free.  
 BRIDGEPORT, CONN., U.S.A.

**The Pulsometer**  
**STEAM PUMP**

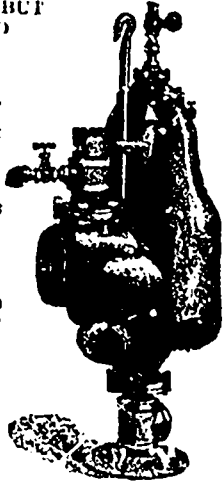
OFTEN IMITATED BUT  
 NEVER EQUALLED

\*\*\*  
 The handiest, simplest and most efficient steam pump for general use in quarries and contractors' purposes.

\*\*\*  
 Muddy or Crispy Liquids Handled without wear.

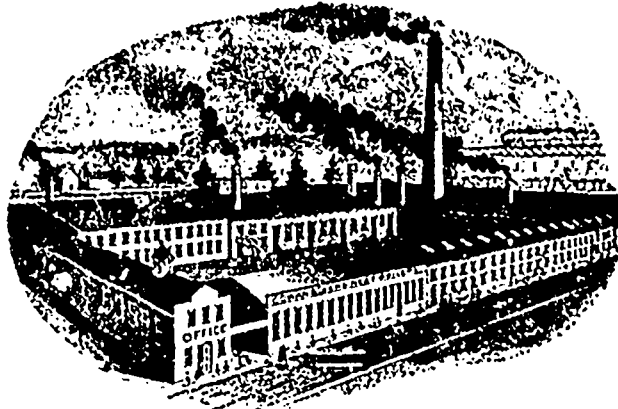
\*\*\*  
 Descriptive Catalogue with prices, furnished on application.

\*\*\*  
**PULSOMETER**  
 Steam Pump Co.  
 New York, U.S.A.



**A. R. Williams Machinery Co.**  
 Toronto and Montreal,  
 Selling Agent for Canada.

**COWAN & CO.**  
 GALT, - ONTARIO.



Manufacturers of  
**Woodworking Machinery**

Corliss, Side Valve Engines, Boilers, Heaters and Saw Mills.

Old Wood Tools, Engines and Boilers, taken as part pay on new.

We have on hand a number of

**REBUILT WOOD TOOLS, ENGINES and BOILERS,**  
 Which we offer at low prices and most favorable terms.

**TORONTO WAREHOUSE - 160 King St. W.**

Write for Terms, Prices and Catalogue.



**HAMILTON, CAN.**

Catalogue on Application.

**The Sturtevant Progressive Lumber Dry Kiln**

Complete .  
 Plans . .  
 Furnished .  
 With . .  
 Each . .  
 Apparatus.

MANUFACTURED BY

**B. F. Sturtevant Co.**  
 BOSTON, MASS., U.S.A.



Absolutely  
 Safe .

AS A

**FIRE  
 RISK**

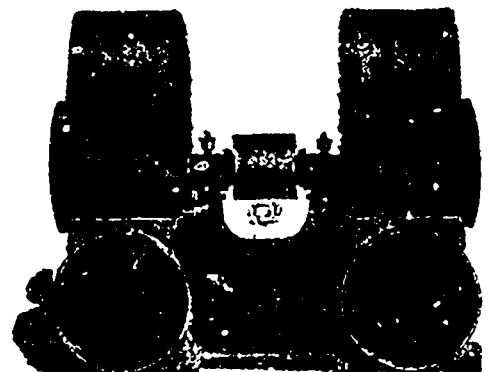
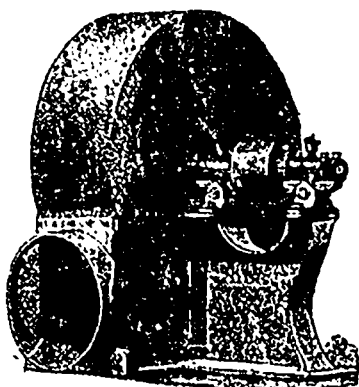
**QUICK DRYING**  
 Economical in  
 use of steam.

**THE STURTEVANT  
 Steel Plate Exhaust Fans**

For Removing Refuse  
 from Wood-working Machinery  
 SEND FOR CATALOGUES

**A. R. WILLIAMS MACHINERY CO.**

GENERAL CANADIAN AGENTS  
**TORONTO, BRANTFORD, MONTREAL**



**DOUBLE EXHAUSTER**