

ert's
rup
od Liver & Lar
S, COLDS
CHITIS

Bilious,
-10c a Box
or Stomach is
he Bowels

To clean your
owels without
amping or over-
ting, take "Cas-
rets." Sick head-
che, dizziness,
lousness, gaser
digestion, sour
set stomach and
l such distress
icest laxative
h for grown-ups
a box—all drug

R GROWS
EAUTIFUL

Does Wonders
lected Hair

A gleamy mass
f luxuriant hair
ull of gloss,
lustre and life
hortly follows a
enuine toning
p of neglected
calps with de-
endable "Dan-
erine."
Falling hair,
aching scalp and
he dandruff is
Thin, dry
r is quickly in-
new strength,
eauty, "Dander-
the hair; a re-
ing tonic—not
y drugstore.

TANT
OTHERS

Ayars Tells
Pinkham's
omound
Her

"I took the
before my last
got to feeling so
sleep nights, my
hips, and I
k during the day,
easy confinement
by. I read about
Vegetable Com-
's Telegram' and
our books. We
town, but I saw
ton's catalogue,
so have all kinds
and outside the
nice healthy girl,
nds at birth. I
utting in a large
me. (She is as
n and tone up the
it may work in
re intends. All
ndable medicine.

Vegetable Com-
edicine for ex-
hould be taken
d. It has a gen-
n and tone up the
it may work in
re intends. All
ndable medicine.

WITH
ND DYES"

feet home dye-
and tinting is
nteed with Dia-
Dyes. Just dip
water to tint
delicate shades,
l to dye rich,
nent colors.
5-cent package
ns directions as
any woman
ve or tint lin-
silks, ribbons,
waists, dresses
ters, draperies,
everything new-
yes"—no other
uggist whether
to color is wool
s linen, cotton,
50c

ELLIOTT Business College
Yonge and Alexander Sts., Toronto
Noted for high grade instruction and
superior employment service. Enter
any time. Catalogue free.
W. J. ELLIOTT, Principal.

CANADIAN NATIONAL RAILWAYS

TIME TABLE
Trains leave Watford station as follows:

GOING WEST
Accommodation, 111.....8.42 a.m.
Chicago Express, 17.....11.59 a.m.
Detroit Express, 83.....6.51 p.m.
Chicago Express.....9.11 p.m.

GOING EAST
Ontario Limited, 80.....7.48 a.m.
Chicago Express, 6.....11.25 a.m.
Express.....2.50 p.m.
Accommodation, No. 112.....6.08 p.m.
G. F. McTAGGART, Agent, Watford.

MEDICAL
JAMES NEWELL, PH. B., M.D.,
L.R.C.P. & S., M.B.M.A., England,
Coroner County of Lambton, Wat-
ford, Ont. Office—Corner Main and
Front Sts. Residence—Front st., one
block east of Main st.

C. W. SAWERS, M.D., Phone 13.
Watford, Ontario, Office—Main st.
Residence—Ontario st., east. Office
hours—8.30 to 9.30 a.m., 2 to 4 and
7 to 8 p.m. Sundays by appointment.

DR. G. N. URIE, B.A.
Licentiate General Medical Council
Kingdom. Member College Physicians and
Surgeons of Ontario.
Successor to Dr. W. G. Siddall
Hours: 8.30 to 9.30 a.m.; 2 to 4 p.m.,
7 to 8 p.m. Sunday by appointment.
Office, Residence Main St., Watford
Phone 32.

DENTAL
GEORGE HICKS, D.D.S., Trinity
University, L.D.S., Royal College of
Dental Surgeons, Post graduate of
Bridge and Crown work, Orthodontia
and Porcelain work. The best meth-
ods employed to preserve the natural
teeth. Office—Opposite Siddall's Drug
Store, Main st.

G. N. HOWDEN, D.D.S., L.D.S.,
Graduate of the Royal College of
Dental Surgeons of Ontario, and the
University of Toronto. Only the
Latest and Most Approved Appli-
ances and Methods used. Special
attention to Crown and Bridge work.
Office—Over Dr. Sawers', Main st.,
Watford, Ont.

VETERINARY SURGEON
J. MCGILLICUDDY, Veterinary
Surgeon. Honor Graduate Ontario
Veterinary College. Dentistry a
specialty. All diseases of domestic
animals treated on scientific prin-
ciples. Office—Two doors south of
the Guide-Advocate office. Residence
—Main street, one door north of Dr.
Siddall's office.

INSURANCE
THE LAMBTON
FARMERS' MUTUAL FIRE
INSURANCE COMPANY
(Established in 1875)

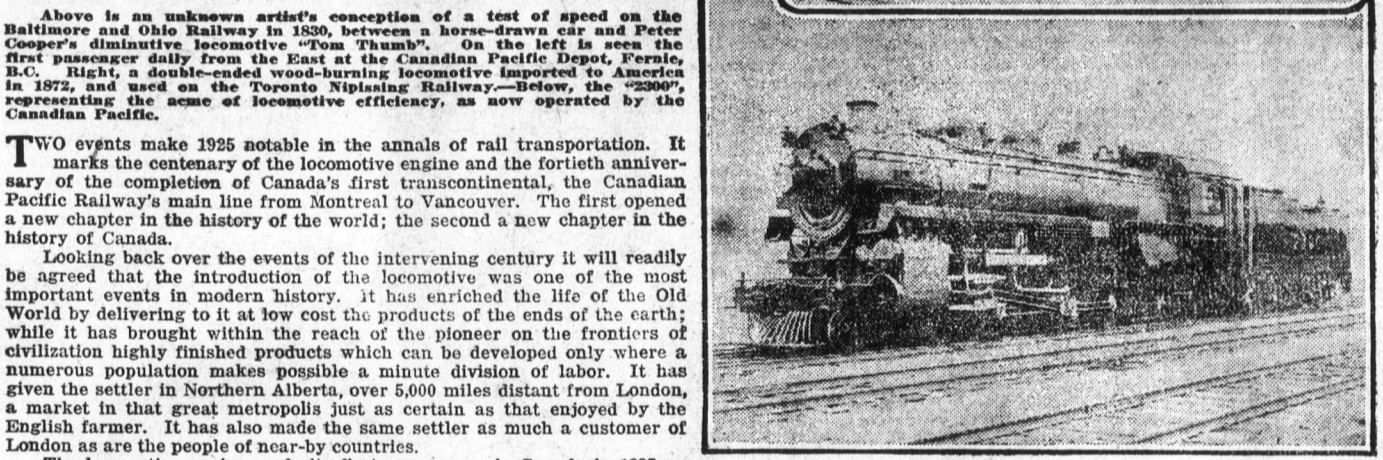
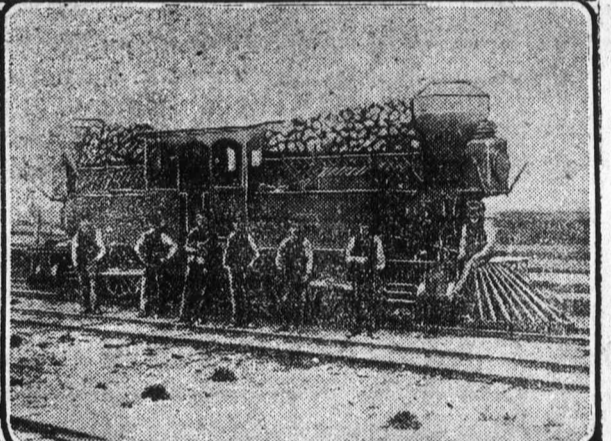
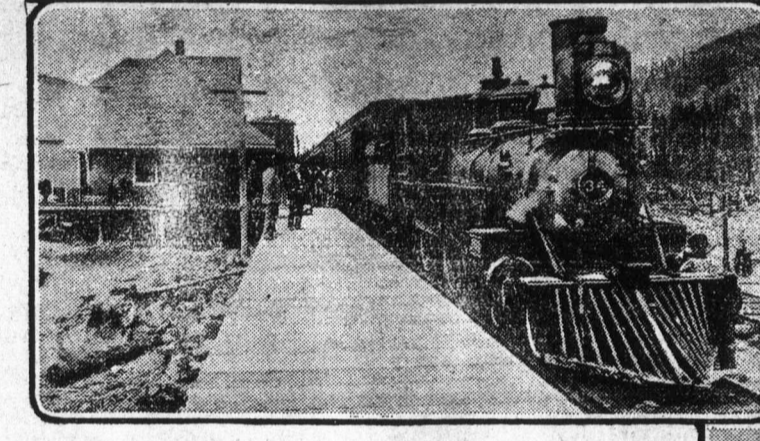
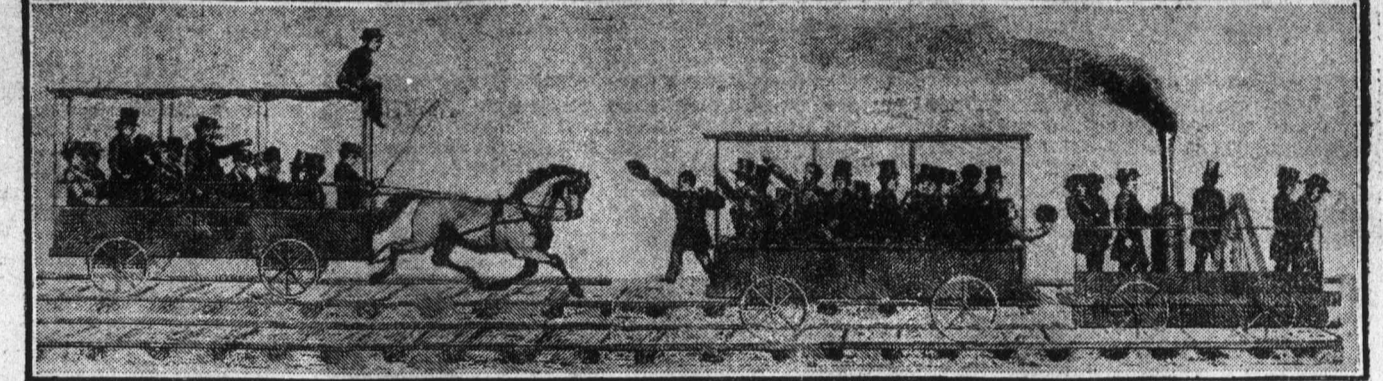
JOHN W. KINGSTON... President
JAMES SMITH... Vice President
ALBERT G. MINIELLY... Director
THOMAS LITHGOW... Director
GULFORD BUTLER... Director
JOHN PETER MCVICAR... Director
JOHN COWAN K.C.... Solicitor
J. F. ELLIOT
ROBERT J. WHITE, Fire Inspectors
ALEX. JAMIESON
P. J. McEWEN... Auditors
W. G. WILLOUGHBY, Manager and
Watford Sec.-Treasurer
ROY E. McPHEDRAN Wainstead
Agent for Warwick and Plympton

An Oil for All Men.—The sailor,
the soldier, the fisherman, the lum-
berman, the out-door laborer and all
who are exposed to injury and the
elements will find in Dr. Thomas'
Electric Oil a true and faithful
friend. To ease pain, relieve colds,
dress wounds, subdue lumbago and
overcome rheumatism, it is excellent.
Therefore, it should have a place in
all home medicines and be amongst
those taken on a journey.

WE SELL
Counter Check
Books
AT LESS
THAN THE COST OF
Postage Stamps!
Phone Us Your Orders
The Guide-Advocate

Mothers can easily know when
their children are troubled with
worms, and they lose no time in ap-
plying a reliable remedy—Mother
Graves' Worm Exterminator.

Fortieth Anniversary of Canada's First Trans-Continental System Marks Centenary of Locomotive.



Above is an unknown artist's conception of a test of speed on the Baltimore and Ohio Railway in 1830, when a horse-drawn car and Peter Cooper's diminutive locomotive "Tom Thumb". On the left is seen the first passenger daily from the East at the Canadian Pacific Depot, Ferris, B.C. Right, a double-ended wood-burning locomotive imported to America in 1872, and used on the Toronto Nipissing Railway.—Below, the "2309", representing the acme of locomotive efficiency, as now operated by the Canadian Pacific.

Two events make 1925 notable in the annals of rail transportation. It marks the centenary of the locomotive engine and the fortieth anniversary of the completion of Canada's first transcontinental, the Canadian Pacific Railway's main line from Montreal to Vancouver. The first opened a new chapter in the history of the world; the second a new chapter in the history of Canada.

Looking back over the events of the intervening century it will readily be agreed that the introduction of the locomotive was one of the most important events in modern history. It has enriched the life of the Old World by delivering to it at low cost the products of the ends of the earth; while it has brought within the reach of the pioneer on the frontiers of civilization highly finished products which can be developed only where a numerous population makes possible a minute division of labor. It has given the settler in Northern Alberta, over 5,000 miles distant from London, a market in that great metropolis just as certain as that enjoyed by the English farmer. It has also made the same settler as much a customer of London as are the people of near-by countries.

The locomotive engine made its first appearance in Canada in 1837 on the Champlain and St. Lawrence Railroad. This road was only 16 miles long, and ran between the town of La Prairie on the St. Lawrence River and St. John's on the Richelieu. This railway was opened in 1836, being operated by horses during the first year.

However, it was not until with the incorporation of the Grand Trunk Railway in 1852 that the railway era in Canada really began. While a beginning had been made in 1837, still during the next fifteen years only 50 miles of line were added. The Grand Trunk linked up Ontario and Quebec, and gave both provinces direct connection with the Atlantic coast through Portland. It also laid the foundations for direct connection between that port and Chicago. Much railway building followed in Ontario. The next project of importance was the building of the Intercolonial, which was begun in 1868, and completed in 1876. This gave Ontario and Quebec direct connection through Canadian territory with a Canadian port on the Atlantic open all the year round. In the meantime an agitation for the building of a railway to connect Ontario and Quebec with the Pacific Coast culminated in the incorporation of the Canadian Pacific Railway.

On November 7th, 1885 at Craigellachie in Eagle Pass, a gorge in the Gold Range, British Columbia, Sir Donald A. Smith, afterwards Lord Strathcona and Mount Royal, drove the last spike in the main line of the Canadian Pacific Railway, thus connecting Montreal with Vancouver. This was a notable event, not only in the history of Canada, but of the British Empire. By the connecting of the Pacific Coast with Montreal Canada secured its first transcontinental railway. Indeed, it was the first real transcontinental on this continent, for while in 1869 the east coast of the United States was connected with San Francisco by rail, and several other such connections have been added, still even now no single railway in the United States extends from Coast to Coast as does the Canadian Pacific in Canada. November 7th was also a notable day for the British Empire in that the Canadian Pacific provided a short cut from Britain to the Orient. As Sir Charles Tupper in his Reminiscences has pointed out, it brought Yokohama three weeks nearer to London than it was by the Suez Canal.

The history of the Canadian Pacific Railway is the history of Greater Canada. When it was first proposed there were only four provinces in Confederation, Ontario, Quebec, New Brunswick and Nova Scotia. Between 1870 and 1873 Prince Edward Island, Manitoba, and British Columbia entered, the last mentioned on the express condition that it would be connected with Eastern Canada by a line of railway. At that time Manitoba was a mere postage stamp in dimensions, and the regions between it and the Rockies were unorganized territory.

The promise of the Canadian Pacific not only brought British Columbia into Confederation, and gave Canada a window on the Pacific; but the building of it, by establishing direct and quick communication between the east and the west fixed the destiny of the vast regions west of the Great Lakes and north of the 49th parallel. The ties of sentiment were thus strengthened by the economic link of steel. Fifty years ago it was by no means certain that the territories between Lake Superior and the Rockies would not pass into the hands of the United States. The shortest route from Eastern Canada to Fort Garry, now Winnipeg, was via Chicago and St. Paul. Trade moved north and south rather than east and west, so that political absorption seemed likely to follow American economic penetration.

It is with the development of Western Canada that the fortunes of the Canadian Pacific have been indissolubly linked. As it has expanded the West has grown. In 1885 there were hardly more than 180,000 people in the whole country west of the Great Lakes. As a result of the Riel Rebellion the country was also in a state of utter confusion. Still the year 1885 marks the real beginning of the period of western development. The country continued its policy of aggressive construction by adding feeders to its main line. This encouraged settlement, for settlers felt themselves secure as long as they were not too far from the railway. Note how the population on the plains began to increase. In 1885, when there were not more than 1,000 miles of railway there were only 130,000 people in that vast territory between Winnipeg and Calgary and Edmonton, one-half of whom were located in Manitoba. Within the next 20 years, the prairie provinces, with about 4,500 miles of railway, had a population of 800,000. By 1923 these provinces had 20,000 miles of line, of which 8,500 belonged to the Canadian Pacific, and their population was 2,000,000.

The driving of the last spike at Craigellachie also marked the opening by the company of the most aggressive and sustained immigration and colonization campaign that Canada has witnessed. From that time to the present the company has spent nearly \$70,000,000 on its immigration and colonization activities. And it got the immigrants too. During the years preceding the incorporating of the company immigrants were coming to Canada at the rate of only 36,000 a year. This was a very light inflow, for away back in 1832 as many as 52,000 were received; but during the period 1881-91 immigration was very nearly trebled; that is it came at the rate of 92,000 a year. Indeed, during the last two decades of the last century the Government seems to have left immigration pretty much to the company, for during the 1882-1902 period, the total expenditure on immigration was only \$5,475,000, as compared with an appropriation of \$2,400,000 this year. Through the company's agencies have come the greater proportion of the over 5,000,000 immigrants received during the last 40 years.

Coincident with the driving of the last spike at Craigellachie the company launched out as a promoter of foreign trade and transoceanic travel. In this department not only has it been by far the most important factor in Canada, but one of the most important within the British Empire, which is saying a great deal, when it is recalled that the latter is the greatest commercial unit that the world has ever seen. Within less than nine months after this spike had been driven there arrived at Port Moody, the terminus of the Pacific, a brig with the first cargo from Japan for the railway. That little brig the "W. B. Flint" of 800 tons, has grown into a great fleet of over 400,000 tons, sailing on two oceans, and linking Europe, America, Asia, and Oceania. In 1887 a regular trans-Pacific service was established, and in 1902 a similar service was launched on the Atlantic. Begun originally as a feeder to the freight department of the railway, the passenger feature of these steamship services has now become of chief importance. As an evidence of how the trans-Pacific trade has grown it may be said that in 1885 Canada sold to China only \$5,972 worth of products and to Japan only \$21,780 worth, whereas during the 12 months ending October, 1924, her sales to China were \$14,012,482 and to Japan \$26,870,033.

CHILBLAINS
Zam-Buk soon allays the inflammation and swelling, kills the stinging pain, and soothes the maddening irritation. Where skin is broken, festering, or ulcerated Zam-Buk is doubly valuable because of its great healing and antiseptic power.
Zam-Buk
Use the "Want Ads" to buy or sell

THE CHILD'S ALPHABET
(As memorized by Mr. John Bryson, of Watford, away back in the Sixties, from an old Public School Reader.)
A is our Advocate, Jesus his name.
B is the Babe, in weakness He came.
C is the Captain and Chief.
D is the Deliverer that brings us relief.
E is the Eternal ancient of days.
F is the Faithful, all worthy of praise.
G is our God and our guide from the fall.
H is the Highest and Holiest of all.

I is the Innocent victim who bled.
J is the Judge of the quick and the dead.
K is our King, let our hearts be His throne.
L is the Lamb, that was slain to atone.
M is Messiah, by Prophets foretold.
N is the Needful one, precious as gold.
O is the Omnipotent one make Him your stay.
P is the Portion, that shall never decay.
Q is the Queen of Christ's choice.
R is the Redeemer, oh heed ye His voice.
S is Salvation, from Hell and from

sin.
T is the Truth, let it rule you within.
U is the Unspeakable gift of God.
V is the Vine where each branch has abode.
W is the Way to our Father on high.
X is our Example, to live and to die.
Y is the Yoke that is easy to bear.
Z is the Zeal for the lambs in His care.
Alpha and Omega, the truth of our heart,
Our Brother, our Prophet, Lord Priest, Thou art.
FOR SALE—Ladies' new style paneled visiting cards at The Guide-Advocate. Phone your orders.