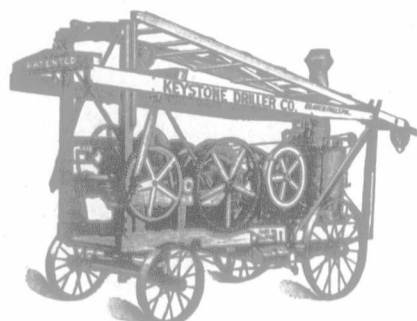


## Well Drilling Machinery

We carry the largest stock on hand of any house in the West and have the greatest variety to select from.



**CLIMAX No. 9**—Tubular and Jetting Machines for 2 and 3 inch wells 600 feet or less.

**MONARCH** Machines for wells 4 to 10 inches and to 1,000 feet or less.

The above are fitted to operate by horse power or steam.

The celebrated **KEYSTONE** line of Traction and Non-Traction Drilling Rigs. Friction or cog hoist—the best in the world for deep well propositions, Mineral, Oil, and Coal Prospecting. Can drill a hole any size from 300 to 3,000 feet.

All the above lines are approved by the Dominion and Provincial Governments, and are entitled to the Saskatchewan Government Bonus.

## STICKNEY GASOLINE ENGINES

1 to 16 H.P. Best Engine made for the farmer.

### Windmills, Tanks, Pumps

Horse Powers, Feed Cutters, Grinders and Saws.

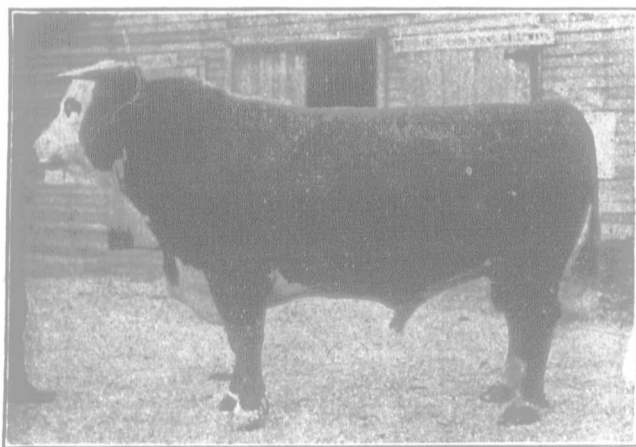
## Empire Cream Separators

Lightest running, closest skimming. Catalogues and prices on application.

## Ontario Wind Engine & Pump Co. Ltd.

WINNIPEG, Man.

Write us to-day if interested.



### AT PRIVATE SALE

## Imported Hereford Cattle

At Lilydale Stock Farm, Halbrite, Sask.

**51 head of Females, all ages**

**20 Bulls, consisting of yearlings and two-year-olds**

This Stock was selected from choicest American herds. Have a few Cows and Heifers bred to such noted prize-winning Bulls as Right Lad and Diplomacy.

Diplomacy is the sire of the Second Prize Steer at the International Live Stock Show at Chicago of last year, shown by F. A. Nave, of Attica, Indiana. The noted bull Beau Nash is now at the head of the herd.

Correspondence solicited. Address:

**Maslam Land Co., Prop.**

**W. W. SMUTZ,**  
Halbrite, Sask.

**GRAND  
TRUNK  
RAILWAY  
SYSTEM**

## Summer Tours

From Winnipeg to

**TORONTO - - - \$39.70**

**OTTAWA - - - \$46.95**

**MONTREAL - - \$48.40**

and return

Rates to other Eastern points correspondingly reduced

### CHOICE OF ROUTES

Both directions via St. Paul and Chicago or Port Arthur and Lakes; or one direction via Chicago and the other via Lake route. For reservations and full particulars apply to

**A. E. DUFF**

General Agent, Passenger Department,  
260 Portage Ave., Winnipeg, Man.

## Something For Every Boy In the West

**T**HE Farmer's Advocate Knife is built for business. You can earn one in a few moments. Show the Exhibition Number of the Farmer's Advocate to your nearest neighbor. Point out to him that he can secure the paper every week of the year for only \$1.50. Tell him what you think of it yourself and you will have no difficulty in securing his name, and the knife is yours for the trouble.

Address

**The Farmer's Advocate**

**Winnipeg, Man.**

AUG  
LI  
W

FA

hanc  
and  
marl  
or h  
die t  
send  
expro  
chew

Waw

MORI

Bovell  
teed eg  
healthy  
paid.

W

Licen

Give

Wate

You w  
if you  
it and  
year.  
We are  
of repi  
special  
they fi  
has be  
This ki  
more b  
repairi  
Send y  
box.

I

Offici

Tho

All g  
Port Arth  
very best