

DEDERICK'S HAY PRESSES.
Made of steel, lighter, stronger, cheaper, more power, ever-lasting and competition distanced.



Address for circulars and location of Storehouses and Agents
P. K. DEDERICK & CO.,
Dederick's Works, Albany, N. Y., or Montreal, P. Q.

Graduated Prices. Recently Furnished.

LELAND HOUSE,

W. D. DOUGLAS & CO., Proprietors.
The Finest Hotel in the Northwest.
Corner City Hall Square, Main & Albert Streets,
CITY HALL SQUARE,

297-7-OM **WINNIPEG, MAN.**

WHERE CAN I REST?

You can rest and get a good lunch with a nice cup of **TEA, COFFEE, MILK, TEMPERANCE DRINKS** or some of the finest **ICE CREAM** made, after which you can purchase some of the finest fruits grown to take with you for home consumption by calling at **W. P. HUFFS, 464 Main-St.,**

19-y-M (Opp. Post Office), Winnipeg.



FARMERS AND HAY MAKERS

Be sure and get the Boss Mower and Sickle Sharpener, nothing surpassing it in Canada. The Mowers, after being ground by the Sickle Grinder, works with perfect ease. Testimonials from all parts wherever used. Send for prices or other particulars to

T. FAIRBAIN,
952 Main-St., WINNIPEG, MAN.
Sole Owner and Manufacturer. 19-d-M

ANDERSON BROS. & CO.,
— DEALERS IN AND BREEDERS OF —

HORSES, CATTLE and SHEEP

Also importers of Montana, Oregon and Washington Territory Horses, Sheep, etc. Farmers going into stock breeding, and can take stock by carload, will find it to their advantage to call on or write us; also parties wishing to dispose of stock. Will either buy straight or sell on commission. Ponies for ladies or children, broken to saddle or harness, for sale. Horses, oxen, cattle and sheep for sale, wholesale or retail. All kinds of cattle taken in exchange or part for horses. Correspondence solicited. Ranch address, Clandeboye, Man.
G. B. Anderson, Manager. 14-f-M Office and Stables, Princess St. WINNIPEG, MAN.

JOHNE SMITH

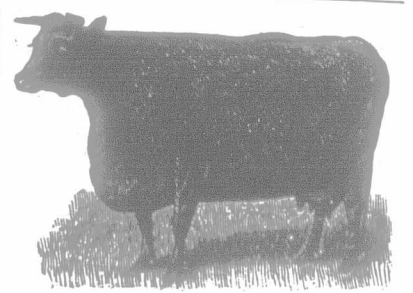
Beresford Stock Farm, Brandon.

We have a carefully selected herd of Shortborns, and can supply our customers with animals of any age or sex. Sometimes we are sold out, the demand is so great, but all parties can depend on getting what they require, as we import when the demand exceeds the supply. Come and see the stock. Wire or write.

19-y-M

J. E. SMITH,

Box 274, Brandon, Man.



PHOTOGRAPHING
BALDWIN & BLONDAL,

SUCCESSORS TO BEST & CO.

Having improved their Studio equal to the best, are prepared to do all work in their line in the Best Style and Finish. **LIFE-SIZE AND CHILDREN'S PHOTOS A SPECIALTY.**

19-f-M

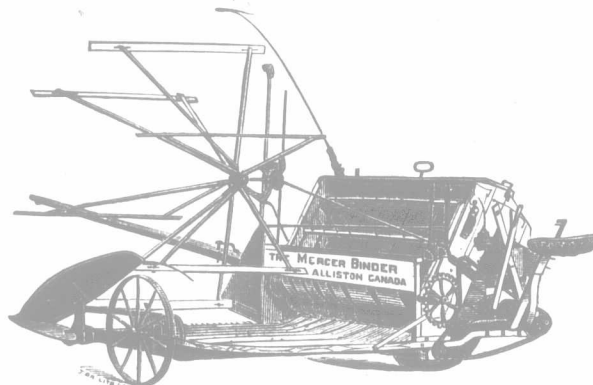
BALDWIN & BLONDAL,

207 Sixth Avenue North

ANDERSON & CALVERT,

— SOLE AGENTS FOR —

MERCER'S CANVASLESS BINDERS



THE GENUINE
ELLIOTT WARRIOR MOWER

Moody & Sons' Tread-Power Threshers.
Besides a general stock of all implements required on a farm.

Farmers and Intending Purchasers would do well to call and see our Samples.

Agencies at Brandon, Hartney, Virden, Portage, Letellier, and Neepawa.

Head Office: Market Square, Winnipeg;
P. O. Box 196.

A full stock of all Elliott & Sons' repairs always on hand. 18-y-M

WESTERN FAIR

LONDON, ONT., SEPT. 17 to 26, 1891.

CANADA'S FAVORITE LIVE STOCK AND AGRICULTURAL EXHIBITION!

Arrangements are completed for a larger and more attractive exhibit than ever. Exhibitors should make entries as early as possible. Space and stabling will be allotted in the order received. **ENTRIES CLOSE SEPT. 12th.** Manufacturing in the Main Building will be exceptionally interesting this year. Special attractions, including speeding in the ring, will surpass anything before offered to the public. For Prize Lists and information apply to

CAPT. A. W. PORTE,

PRESIDENT.

THOS. A. BROWNE,

SECRETARY.

LAND FOR EVERYBODY.

FREE GRANTS OF GOVERNMENT LAND

CHEAP RAILWAY LANDS FOR SALE ON EASY TERMS.

GOOD SOIL!

PURE WATER!

AMPLE FUEL!

The construction of the Calgary & Edmonton Railway, and the Qu'Appelle, Long Lake and Saskatchewan Ry. has opened up for settlement two new districts of magnificent farming land, viz. the valleys of the North and South Saskatchewan Rivers, and that between Calgary and Red Deer. Full information concerning these districts, maps, pamphlets, etc., free. Apply to

OSLER, HAMMOND & NANTON,

LAND OFFICE, 381 Main Street, WINNIPEG.

Calgary and Edmonton Railway, Qu'Appelle, Long Lake and Saskatchewan Railway Company.

297-5-OM