

NEW COMPANIES.

Petrolia Gas Company, Limited, Petrolia, Ont., incorporated, capital \$40,000. Directors, W. C. Noxon, Charles Swabey, and others.

St. Mary's Hardware Company, Limited, St. Mary's, Ont., incorporated, capital \$40,000, to carry on a hardware business. Directors, J. W. Peart, W. H. Bartlett and Nelson Mulloy.

Lyon & James, Limited, Toronto, incorporated, capital \$40,000, to carry on the business of engravers, lithographers etc. Directors, W. R. P. Parker, George N. Clark and John M. McEvoy.

The Delta Chi Chapter House, Toronto, incorporated, to build or acquire a chapter house for use of members of the Law Society of Upper Canada. Directors, Frank Ford, W. W. Livingstone, and others.

Stinson-Reeb Builders' Supply Company, Limited, Montreal, incorporated, capital \$20,000. Promoters, J. K. Stinson, Montreal, J. A. Reeb, Port Colborne, Ont., and others.

Imperial Rattan Company, Limited, Walkerville, Ont., incorporated, capital \$40,000, to manufacture furniture, fixtures, etc. Directors, H. W. Strudley, J. S. Rogers, and G. H. Bancroft.

Sovereign Cobalt Mining Company, Company, Limited, Toronto, incorporated, capital \$200,000. Directors, P. J. M. Horrocks, W. A. Smiley, and F. J. Stanley.

Western Machine Company, Limited, Toronto, incorporated, capital \$40,000, to manufacture producer gas plants, steam engines, and general machinery. Directors, George McLachlan, B. Thompson, and W. T. Folliott.

Majestic Polishes, Limited, Toronto, incorporated, capital 40,000, to manufacture varnishes, paints and polishes. Directors C. G. Armstrong, Thomas H. Wilson, and others.



Robinson's Patent Moulds

For sewer and culvert pipes with adjustable cone top filler and reversible bottom ring for making plain or telescopic joints, made of heavy galvanized steel and guaranteed to be the best on the market. Order now.

Climax Road Machine Co., Hamilton, Canada

Phone No.: PARKDALE 1809.

Post Office and Telegraph Address: SWANSEA.

THE DOMINION SEWER PIPE CO., LIMITED

SWANSEA, TORONTO, ONT.



We have just completed one of the finest sewer pipe factories in America, equipped with the latest machinery, and are now producing very superior

- VITRIFIED SALT GLAZED - SEWER PIPES

Price Lists and Discounts on Application

In Sizes from 4 inches to 24 inches

PORTLAND CEMENT.



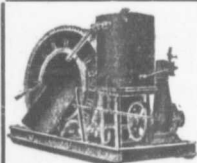
SEWER PIPES

FIRE BRICKS

FIRE CLAY

ALEX. BREMNER

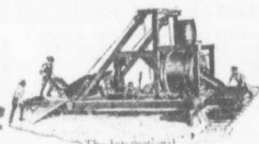
50 Bleury Street, MONTREAL



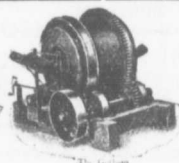
The Snow Motor Batch



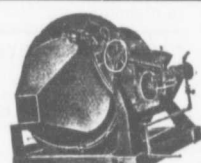
The Universal



The International



The Universal



The Universal



The Kershaw



The End Feed Concrete



The Colburn Trough

CONCRETE MIXERS

MADE BY THE

United Concrete Machinery Company

NOT ONE TYPE

BUT MANY TYPES

Most up-to-date in the market in the various types, and with all the latest improvements. Very best materials and workmanship. Made in all sizes and of capacities from 3 to 75 cubic yards per hour.

Prices from \$100.00 upwards, according to Style and Capacity

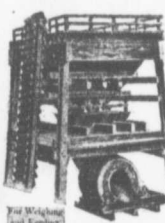
—SEND FOR CATALOGUE—

E. F. DARTNELL, MONTREAL

Dealer in Builders' and Contractors' Supplies



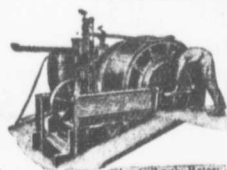
The Concrete Hand Power Mixer



The Concrete Hand Power Mixer



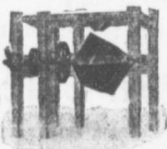
The Portable Gravity



The Colburn Rotary



The Colburn Rotary



The Colburn Rotary



The Colburn Rotary



The Colburn Rotary