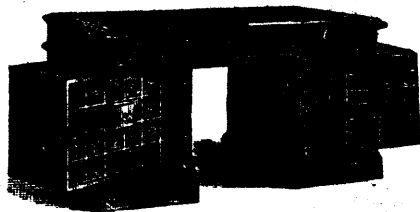


W. STAHLSCHEIDT & CO.,

PRESTON, ONT.,

MANUFACTURERS OF

School, Office, Church and Lodge
Furniture.



ROTARY DESK

No. 50.

Send for Circulars and Price List. Name this
paper.

S. LENNARD & SONS

DUNDAS, ONT.,

PATENTERS OF THE "ELYSIAN" SEAMLESS HOSIERY,

Manufacturers of Plain and Fancy
Hosiery, Caps, Ties, Sashes,
etc., etc., etc.,

To the Wholesale Trade only.

Represented in Eastern Ontario, Que-
bec, Nova Scotia and New Brunswick,
by

F. W. NEWMAN & CO.,
21 Lemoine St., Montreal.

In Manitoba by
PEDDIE & CO.,
WINNIPEG, MANITOBA.

In Western Ontario by
S. LENNARD,
Senior Member of the Firm.

ESTABLISHED 1820.

EAGLE FOUNDRY.

GEORGE BRUSH,

14 TO 84 KING AND QUEEN STREETS, MONTREAL.

Maker of

STEAM ENGINES,
STEAM BOILERS,
HOISTING ENGINES,
STEAM PUMPS,
CIRCULAR SAW MILLS,
BARK MILLS,
SHINGLE MILLS,
ORE CRUSHERS,
MILL GEARING,
SHAFTING,
HANGERS AND
PULLEYS.

HAND AND POWER HOISTS FOR
WAREHOUSES, &c., &c.,

and Agent for

"Water's" Perfect Steam Engine Governor, and
"Heald & Sisco's" Centrifugal Pumps.

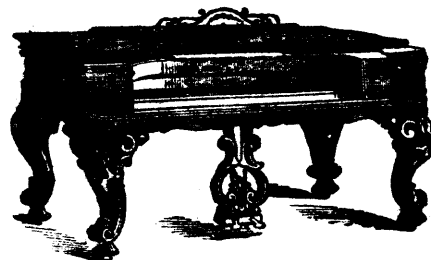


EVERY REPUTABLE DEALER KEEPS
THEM.

Insist on having the Genuine, and see
that they bear our name.

LANSDOWNE PIANO CO.

UPRIGHTS
AND
SQUARES



The Leading Canadian Pianos

STRICTLY FIRST-CLASS. Correspondence Solicited.

86 York St., Toronto.

Established 1872.

THE ACCIDENT

INSURANCE CO. OF NORTH AMERICA.

NEW FEATURE,

JOINT INSURANCE

FOR PARTNERSHIPS

IMPORTANT TO MANUFACTURING FIRMS.

MEDLAND & JONES,

GENERAL AGENTS,

Corner Adelaide and Victoria Streets,

TORONTO.

J. M. LAUGHLIN'S SONS,

CROWERS
MERCHANTS,
AND EXPORTERS OF

SHREVEPORT, N.Y.

AMERICAN TEASELS.

