

punctate. Elytra finely moderately closely punctate, the surface finely but not closely rugulose, owing to the irregular coalescence of the punctures; sutural stria alone evident; disc with two costæ faintly indicated anteriorly, the punctures defining them being more nearly serial in arrangement than elsewhere. The marginal fringe consists of two series of hairs, one superior and directed upward, the other epipleural and horizontal. Prosternum carinate at middle, polished and impunctate except near the side margins. Metasternum and abdomen rather sparsely punctate.

Length, 7-7.5 mm. Width, 2.8-3 mm.

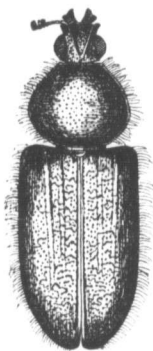


FIG. 10.

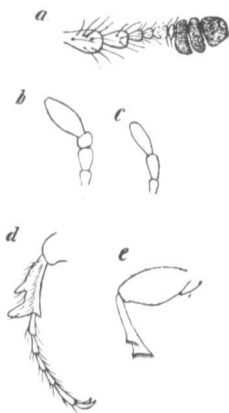


FIG. 11.

The accompanying figure (Fig. 10) represents fairly well the general aspect of the insect, but the cephalic ridges are somewhat exaggerated and the antenna is a little short. The antenna is, moreover, more correctly represented in (a) Fig. 11, while b, c, d and e illustrate respectively the maxillary palpus, labial palpus, front tibia and tarsus, and hind femur and tibia.

*Platycerus latus*, sp. nov.

Stout, convex, nearly black, shining. Head small, coarsely confluent punctured; mandibles small, not differing in the sexes. Scape of