

DRAUGHTS-CHECKERS

All communications to this department should be addressed directly to the Checker Editor, W. Forsyth, 36 Grafton Street.

NEWS.

The Liverpool Mercury says:—"Checker players are not unusually distinguished in other arts and accomplishments. Many of them can play fairly well at the higher game of chess, and, generally, they are reasonably skilled in dominos. But the North-End members appear to persevere so much at the mirror arts that one of them has recently gained a prize and was at the same time declared champion tin-whistle player!"

SOLUTION.

PROBLEM 233.—The position was:—black men 3, 5, 8, 20, 26, kings 21, 25, 27; white men 14, 16, 17, 18, 22, 24, kings 10, 19. White to play and win.

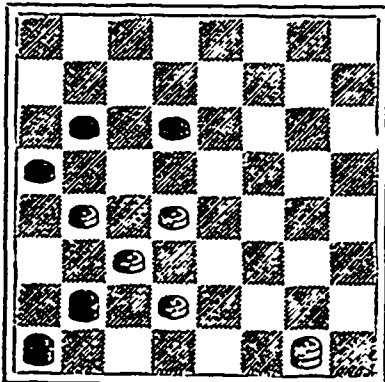
16 11 11 7 19 23 13 21
8-15 21-14 27-18
18 11 10 17 17 13 white
25-9 3-10 20-27 wine.

GAME 113—"AYRSHIRE LASSIE."
Played at Boston between Messrs. Durgan and Smith.

11-15 8-11 15-29 22-13
24 20 25 21 7 3 31 22
8-11 14-18 29-25 12-16
28 24 30 25 13 9 23 17
4-8 11-16 5-14 13-22
23 19 20 11 17 10 6 9
12-16 7-16 11-15 5-14
19 12 22 17 3 7 10 26
15-18 2-7 1-5 16-19
22 15 12 8 10 6 32 27
10-28 3-12 15-18 28-32
21 17 26 23 7 10 27 24
11-15 16-19 18-23 19-28
17 13 23 14 6 2 26 23
9-14 7-11 25-22 Smith
25 22 14 17 2 6 (white)
6-10 19-23 23-26 won.
29 25 27 18 21 17

PROBLEM 235.

By an "Unknown" in Gould's Book of Problems.
Black men 9, 10, 13, kings 25, 29,



White men 17, 18, 22, 26, king 32
White to play and win.

A very fine position that will command itself to players.

"THE PUBLIC
HAILS WITH JOY"

a remedy that is used but once a day and that once at bedtime.

"Dyspepticure" is used but once a day at bedtime for indigestion, Chronic Dyspepsia, Sleeplessness. For Headache or distress after eating, use it whenever needed, it relieves wonderfully & cures quickly.



Children

always

Enjoy It.

SCOTT'S
EMULSION

of pure Cod Liver Oil with Hypophosphites of Lime and Soda is almost as palatable as milk.

A MARVELLOUS FLESH PRODUCER

It is indeed, and the little lads and lassies who take cold easily, may be fortified against a cough that might prove serious, by taking Scott's Emulsion after their meals during the winter season.

Beware of substitutions and imitations.

SCOTT & BOWNE, Belleville.

GILLETT'S

PURE
POWDERED 100%
L Y E

PUREST, STRONGEST, BEST.
Ready for use in any quantity. For making Soap, Softening Water, Bleaching, and a hundred other uses.
A can equals 25 pounds of Soda.

Sold by All Grocers and Druggists.
E. W. GILLETT, Toronto.

TRUSSES.

We carry in Stock all kinds of Spring and Elastic Trusses, Abdominal Supporters, Belts, Shoulder Braces, &c.

HEADQUARTERS FOR CRUTCHES.

Agents for SULLEY'S HARD RUBBER TRUSSES.

Buckley Bros.

87 & 89 BARRINGTON STREET.
201 BRUNSWICK STREET.

Army and Navy Depot, Granville St
HALIFAX, N. S.
FULL STOCK GROCERIES, viz:

SUGAR, Cut Loaf, Granulated, Pulverized
Porto Rico.

TEAS and COFFEE, best value in the city
CHERRY, English and Canadian Stilton.

FLOUR, best Pastry and Superior.

OATMEAL and CORNMEAL.

BUTTER and LARD (in 10, 5 and 3 lb tins).

MOLASSES, Diamond N., Golden Syrup.

PICKLES, Assorted; Lazenby and Cross and Blackwell.

SAUCES, Worcester, Harvey, Nabob, etc.

JAMS and JELLIES, Cross and Blackwell, Keller and Norton.

FRENCH PEAS, MUSHROOMS, CAPERS, etc.

TRUFFLES, CAPERS and OLIVES.

SOUPS, in tins. Huckin's American.

CANNED and POTTED MEATS.

CONDENSED MILK, Swiss and Truro.

BISCUIT, English, American & Canadian.

BENT'S WATER CRACKERS and WAFERS.

RAISINS, CURRANTS, FIGS, DATES, ORANGES.

TOBACCO and CIGARS, Havana.

JAS. SCOTT & CO.

WHEN IN NEED

Of Furniture, Carpets, Oilcloth, Curtains, Bedding or Housefurnishing Requisites of any description, it will be to your interest to see our stock before committing yourself to any purchases.

We have a fine range of patterns in every department and our regular list prices are as low as other houses with their discounts off, but during the month of July we will offer special inducements that we are confident will satisfy purchasers that we are willing to handle goods at closer margins than any other house in the trade, for cash or easy terms of payment by Instalments.

No trouble to show visitors all the interesting features we have to offer, whether wishing to purchase or not.

Our "House Furnishing Guide" mailed to any address on application.

Nova Scotia Furnishing Co., Ltd.

SUCCESSORS TO

A. STEPHEN & SON,

Complete House Furnishers.

101 & 103 BARRINGTON ST., COR. PRINCE ST., HALIFAX, N. S.

NOVA SCOTIA PROVINCIAL
EXHIBITION

—AND—

GRAND INDUSTRIAL FAIR.

To be held in the

Royal Exhibition Building and Grounds, Halifax,

—FROM—

29TH SEPT. TO 2ND OCT., 1891, INCLUSIVE.

Grand Provincial Show of Live Stock, Agricultural and Horticultural Products, Arts and Manufactures.

Active committees are at work making arrangements for special attractions, due notice of which will be given.

Prize Lists and all information obtained on application at Exhibition Office, Provincial Building, Halifax.

GEORGE LAWSON, PH. D., LIT. D., Honorary Secretary.

JOHN F. STAIRS, M. P., President.

Lots of people don't know that they can buy

American Express Co.'s Money Orders,

payable in all parts of the United States, Canada and Europe, for about half the price of P. O. Money Orders or Bank Drafts.

And that they can also buy

UNDERWOOD'S and STEPHEN'S INKS,

All kinds of BLANK BOOKS,

ENVELOPES, from 75c. per Thousand up,

1000 page LETTER BOOK, 1 Bound, for \$1.50,

The Celebrated SHANNON FILE, &c., at

KNOWLES' BOOKSTORE.

Cor. George & Granville Streets.

GRIFFIN & KELTIE,
Monumental Designers and
SCULPTORS.

Manufacturers and Importers of
Monuments and Tablets, in Marble, New Brunswick, Scotch and Quincy Granites.

Wood and Slate Mantels, Grates, Tile Hearths. Marble and Tile Floors a Specialty.

323 Barrington St., HALIFAX, N. S.

Lloyd Manufacturing & Foundry Co.

(LIMITED.)

Kentville, Nova Scotia.

MANUFACTURERS OF

LANE'S IMPROVED ROTARY SAW MILLS,

LLOYD'S SHINGLE MACHINES,

CYLINDER STAVE MILLS,

HEADING ROUNDERS,

BUZZ AND SURFACE PLANERS,

AND ALL KINDS OF SAW MILL AND MINING MACHINERY.