

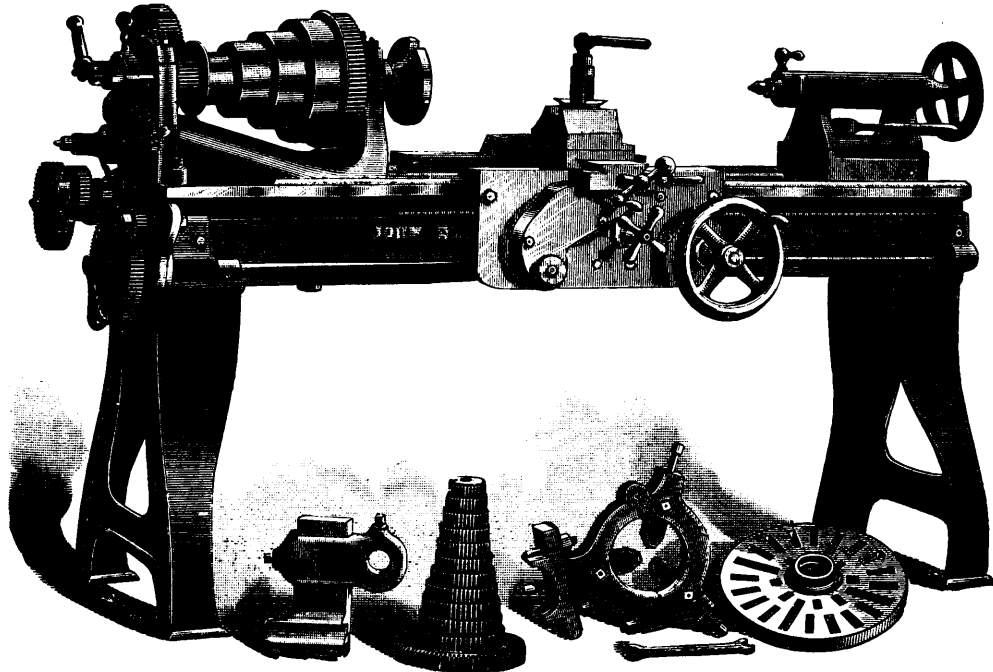
Canada Tool Works,

# JOHN BERTRAM & SONS

DUNDAS, ONT.

Manufacturers  
of  
**Machinists' Tools**  
and  
**Woodworking  
Machinery.**

LATHES,  
PLANERS,  
DRILLS,  
MILLING  
MACHINES,  
PUNCHES,  
SHEARS,  
BOLT  
CUTTERS  
SLOTING  
MACHINES,  
MATCHERS  
MOULDERS,  
TENONERS,  
BAND SAWS,  
MORTICERS,  
SAW BENCHES

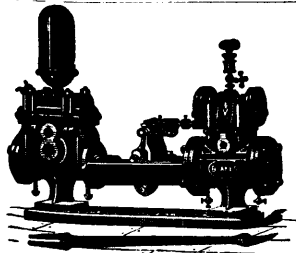


16-in. LATHE.

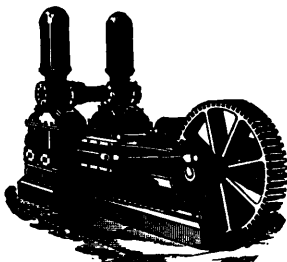
Locomotive and Car Machinery, Special Machinery, Price List and Photographs on application.

Warerooms: Permanent Exhibition, Toronto; Polson Engine Co, 38 Yonge St.; Machinery Supply Ass'n, Montreal.

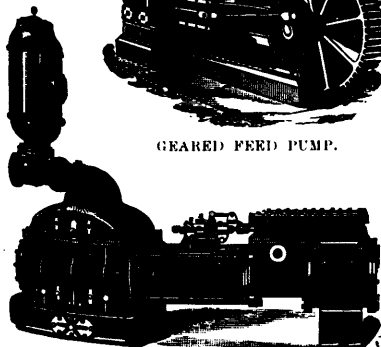
## Geo. F. Blake Manufacturing Co.,



BOILER FEED PUMP.



GEARED FEED PUMP.



DUPLEX COMPOUND ENGINE

BUILDERS OF

SINGLE AND DUPLEX

Steam and Power

### Pumping Machinery



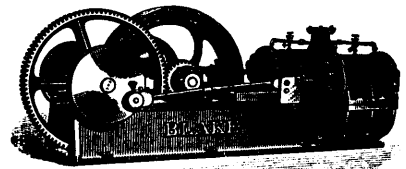
**BOSTON.**

111 FEDERAL STREET.

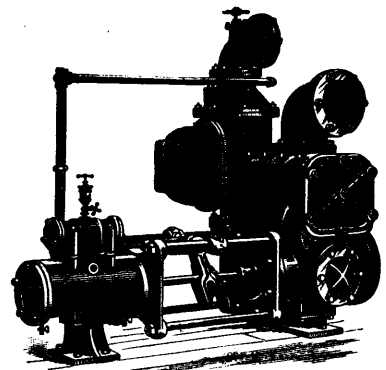
**NEW YORK.**  
95 & 97 LIBERTY STREET.

SEND FOR ILLUSTRATED CATALOGUE.

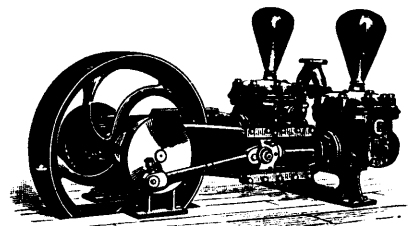
These goods may be seen at the Permanent Exhibition 63 to 69 Front Street West, Toronto.



AIR COMPRESSOR.



AIR PUMP AND CONDENSOR.



BELT PUMP