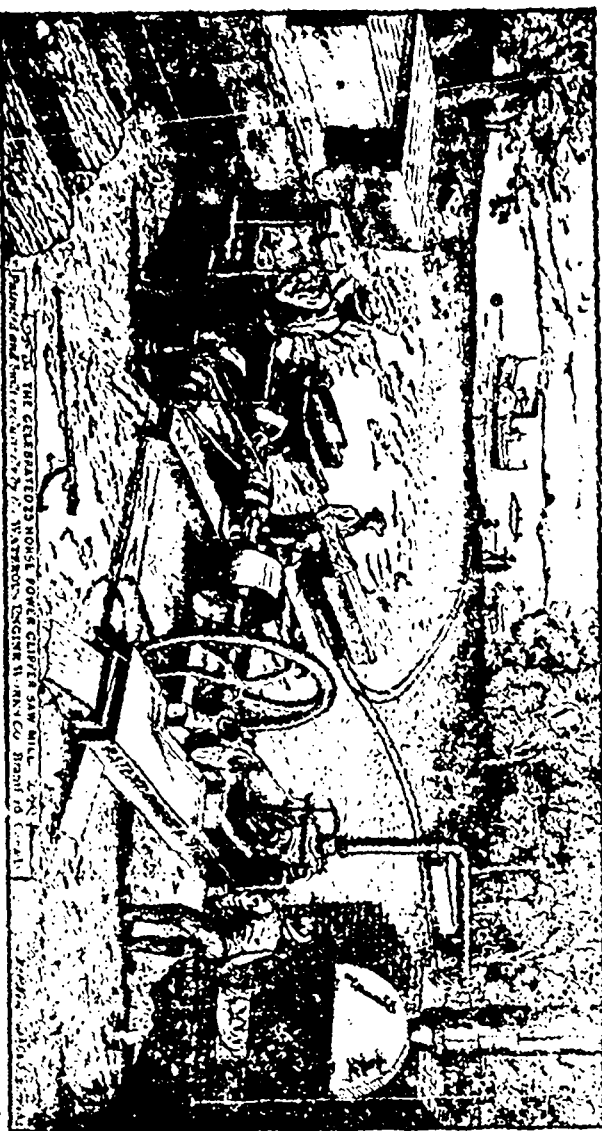


# Semi-Portable and Portable Direct Action and Belted Saw Mills

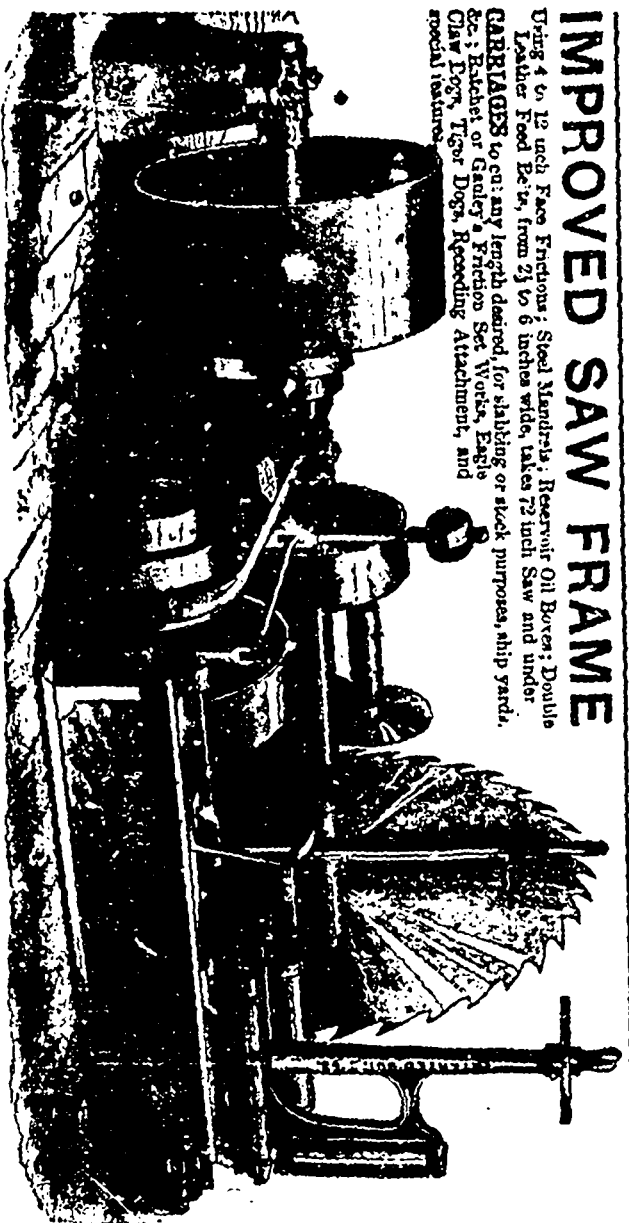
THREE DIFFERENT SIZES.



Above cut represents Our 26 H. P. Patent Direct Action Mill which we guarantee to cut 8,000 to 12,000 feet of lumber per day of ten hours, and to be the most efficient, economical and durable mill built in America, and will save lumber cheaper per thousand than heavy logs size belted or gang mills. For over a quarter of a century the leading pioneer mill of Canadian settlers. Specially constructed for hard work.

## IMPROVED SAW FRAME

Using 4 to 12 inch Face Friction; Steel Mandrels; Reservoir Oil Bore; Double Leather Feed Belts, from 2 1/2 to 6 inches wide, takes 7 1/2 inch Saw and under. GARRAGES to cut any length desired, for slabbing or stock purposes, ship yards. See: Hatchet or Gandy's Friction Set Works, Eagle Claw Pegs, Tiger Dogs, Repeating Attachment, and special features.

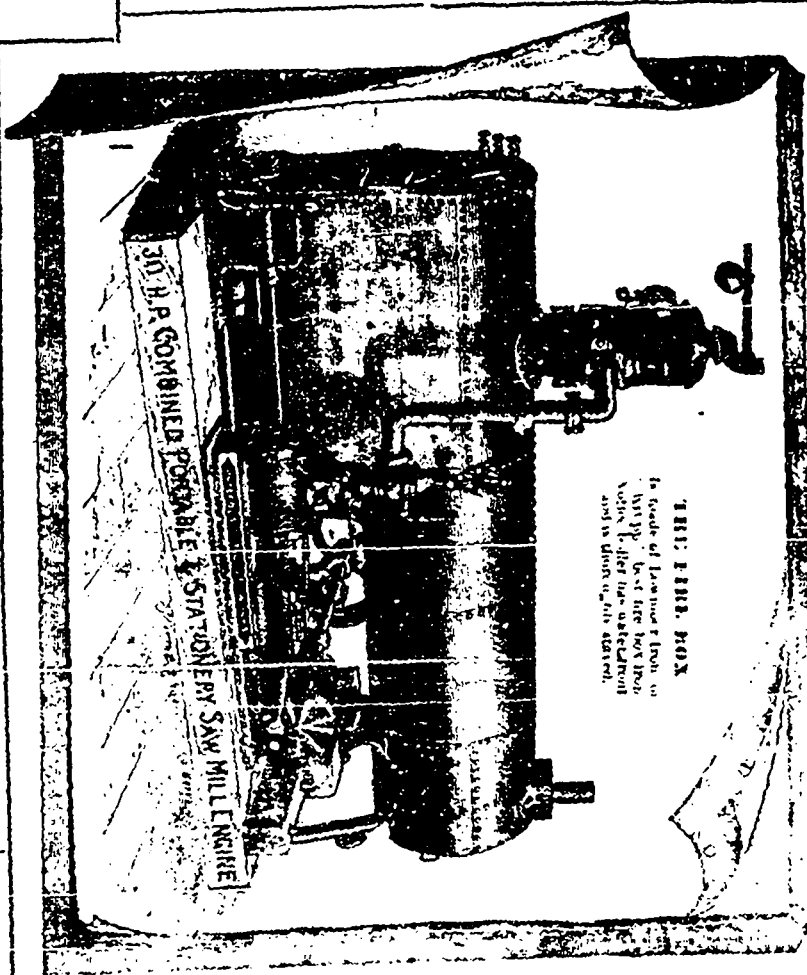


Double Edgers, 2, 3 and 4 saws; Automatic Lumber Trimmers, 5 to 9 saws each; Log Turners, Slash Tables, Log Jacks or Haul-up of all Capacities, Endless and Single Chain; Automatic Log Rollers, Transferers, Live Rolls, Shingle Machines, Drag Saws, Knee Bolters or Block Splitters, Shingle Packers, Gang Lath Mills, Stave Machines, Automatic Sawdust Feeders for Gangs of Boilers, Sawdust, Slab and Refuse Conveyors, Elevators, Pickering Governors, Worthington and Blake Steam Pumps, American Planing and Matching Machines, American Saws, Solid and Inserted Tooth, Extra Thin Circular Board Saws a specialty, Swages, Gunners, Emery Wheels, and all kinds of Saw Mill Furnishings kept in stock.

# WATERLOO ENGINE WORKS CO., Brantford, Canada.

Send for New Price List and Illustrated Circular, of special interest to saw-mill men.

Mention this Paper.



THIS ENGINE BOX is made of laminated iron to keep it set the box has no holes after the installation and is then painted.

This Cut represents the Engine furnished with Nos. 8, 12, 16 and 18 Saw Mills

A. & P. White, Pemiroke, have one of these 30 H. P. mills at Deux Rivières, C. P. R. R. G. O. V. Hall, Quebec, has one of these 3 H. P. mills at St. Agner, Quebec. Also, W. & R. Wallace, Gardner's Creek, N.B., with 60 foot Ship Yard Carriage.

## Champion Portable Saw Mills

12, 16, and 20 H. P.



Greater than writes as follows:—"St. J. 1892. I have just finished making with your 20-horse power Champion Engine, and No. 3 mill before harvest. At the last place I cut 245,000 feet, mostly inch, 70,000 being cut in the week. We were just ten weeks from time we moved mill till we returned home with it. We saved the horse without an accident or delay of any kind. I have run the mill now three years almost continually. I find no trouble in keeping up steam with the mill and return just as it comes from sawing frequently use a portion of the sawdust. I can saw 2,000 feet 1 1/2 inch lumber in an hour."

The following are a few who have bought these mills:

- Canada Pacific R. R. Co.
- G. E. Hall & Co., Que. (2)
- Douglas Land & O. Co., Que. (2)
- Sorel R. L. Co., Que. (2)
- Coelmann Lumber Co., Que.
- Bow River, N. W. T.
- Nor. West. Mills - yard
- Aling O.
- Bow River, N. W. T.
- Toronto and Nor. West
- Colonization Co., Near Brantford.
- Morton Dairy & Farming Co., Turville Mountain.
- Allan Grant, Ottawa.
- Geo. Parley, Ottawa.
- Michipicouin Native Copper Co.
- W. W. Sleser, Montreal