

abundance of trees, in fact almost too many. Its area is about 16 acres. Being easy of access, it is a favorite resort in the evenings and on Sunday afternoons and evenings. Very slight improvements had been made for many years till the season of 1904. In October, 1903, the city appointed J. S. Pearce parks superintendent, giving him full control and supervision of all the city parks, together with the trees on the streets and boulevards throughout the whole city. He was also given full authority to prune, cut down, or trim out any trees that were unsightly or out of place. Under his direction a vast improvement has been made. Some 1,600 trees were marked by him a year ago last winter. Nearly all these have since been cut down. The work was done by people out of employment and cost the city but little.

The new superintendent laid plans for a number of alterations in this park. The band stand was moved to a more suitable place. A larger flower bed was made near the center of the park. Some trees were cut out. Much of the old shrubbery was cleaned up or cut out and many of the

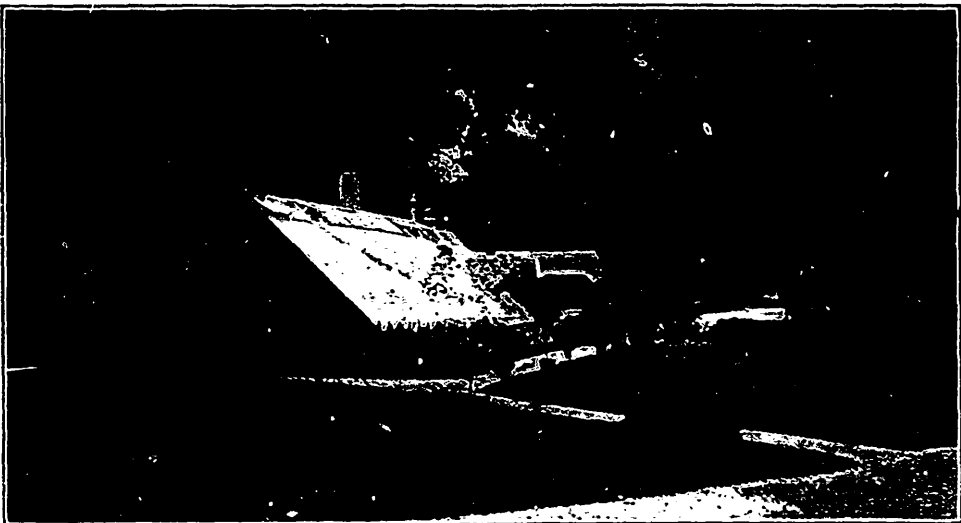
flower beds were rearranged. These changes have so improved the appearance of the park as to cause the most favorable comment. The next step was to plant a lot of new shrubs, trees and perennials. The general appearance of the park can be judged from the cuts reproduced from photos taken during the summer of 1904.

QUEEN'S PARK.

This park has been cleaned up and put in good order. Beds of flowers and shrubs have been planted. Further improvements have been made this year. A number of small plots have been cleaned up and trees and flowers have been planted.

SPRINGBANK PARK.

This park is situated four miles down the river at the city waterworks, and contains some 300 acres. It is beautifully situated, with hill and valley, stream and forest. It is a favorite resort in the afternoons and evenings during the summer months. It is under the control and management of the Water Commissioners, who are gradually improving it. The street railway have a double track into the grounds. Nature has done so much toward making this a



Greenhouse and Surroundings, Victoria Park, London, Ont.