

ALD BENNETT
Giles Bennett
Wounds Sept.

GOULD
Mill, Steam Mill
action on July

POWER
in action
LSON
(also overseas)

ALS
in action
WARD

ct. 30, 1917

l Cards

illoney
ST
Kentville, N. S.

STOCK
College of Med.

over Wines
N. S.
12, 30 a. m.
to 2 p. m.

OUTHIT
NOTARIES
AGENTS

MASTERS
Mortgagor
Life and Acc
Company's
Kentville.

R. C.
r, Notary
S.
Real Estate

Campbell
Vineo's Next Door
Kentville
last Friday and
month in Dr.

Residence 41
5 p. m.
to 12

D. D.
Dental Office
Drug Store
98

Rockwell
Maryland
Bank Building
a. m. to 5 p. m.
Daily

antic Ry.
Ship Service
Dec 3rd.
BRT will leave
respect and
le

ays & Fridays
Wolfville for
ro

& Saturdays
Dec 29th '17

CE
THE EMPIRE.

(Via Reu-
cy)—Reuters
ordance with
expressed last
rence, Do-
and their
arrange aser-
var Cabinets
Conferences
d in London
ination of

It is un-
representatives
will attend to
ritish Minis-
s. The Im-
ow trying to
ich will suit
o, of all, but
has yet been
arding the
the states-
to England.

res Colds, Etc.



Synopsis of Canadian North-West Land Regulations.

THE sole head of a family, or a male over 18 years old, may homestead a quarter section of arable Dominion land in Manitoba, Saskatchewan or Alberta. Applicant must appear in person at the Dominion Lands Agency or sub-Agency for the district. Entry by proxy may be made at any Dominion Lands Agency (but not Sub-Agency) on certain conditions.

Duties—Six months residence upon and cultivation of the land in each of three years. A homesteader may live within one mile of his homestead on a farm of at least 80 acres, on certain conditions. A habitable house is required except where residence is performed in the vicinity.

In certain districts a homesteader in good standing may pre-empt a quarter section alongside his homestead. Price \$3.00 per acre.

Duties—Six months residence in each of three years after earning homestead patent; also 50 acres extra cultivation. Pre-emption patent may be obtained as soon as homestead patent, on certain conditions.

A settler who has exhausted his homestead right may take expurchased homestead in certain districts. Price \$3.00 per acre. Duties—Must reside six months out of three years, cultivate 50 acres an acre a house worth \$300.

The acres of cultivation is subject to reduction in case of rough, shrubby or stony land. Live stock may be substituted for cultivation under certain conditions.

W. W. COREY, C. M. G.,
Deputy of the Minister of the Interior

Fertilizer

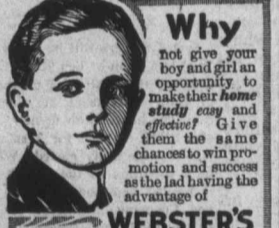
It is hard to make most of the farmers realize that there is a great possibility of them not being able to get what commercial fertilizer they will require this spring. But never the less it is an absolute fact and the wise farmer will take home his fertilizer soon. As if you wait till spring you may not be able to get any. As even now it is very hard to get what you want as transportation is so bad we have only a few more cars of Basic Slag to sell.

C. O. COOK & SON
Waterville

Farmer's LOOK HERE!

It is a positive fact that there will be a great advance in having machinery before July 1st. We sell the famous Frost and Wood Mower with 3 1/2, 4, 4 1/2, 5 and 6 feet cutting bar, also the Tiger Self Dumping Rakes, 8, 9, and 10 feet wide, which any boy who can drive a horse can operate. Hay Tedders and Loaders. We have a limited number of Cultivators and weedeers. So place your orders early and Save Money. Extra repair parts always on hand.

F. G. NEWCOMBE & SON
Sheffield Mills



Why not give your boy and girl an opportunity to make their home study easy and effective? Give them the same chances to win promotion and success as the lad having the advantage of



WEBSTER'S NEW INTERNATIONAL Dictionary in his home. This new creation answers with final authority all kinds of puzzling questions in history, geography, biography, spelling, pronunciation, sports, arts, and sciences. 660,000 Vocabulary Terms, 3700 Pages, Over 6000 Illustrations, Colored Plates. The only dictionary with the Revised Page. The type matter is equivalent to that of a 15-volume encyclopedia. More Scholarly, Accurate, Convenient, and Authoritative than any other English Dictionary.

REGULAR AND INDIA-PAPER EDITIONS. WRITE for specimen pages, illustrations, etc. FREE. A set of Pocket Maps if you name this paper. G. & C. MERIAM CO., SPRINGFIELD, MASS.

Let Us Do Your Printing Algoma and an Author

We have exception facilities for work on all kinds of printing and can quote you prices as low as consistent with high prices of stock etc.

Billheads, Posters, Letterheads, Dodgers, Noteheads, Placards, Statements, Window Signs, Church Circulars, Financial Statements, Annual Reports, Ruled ms of all kinds.

There is little in the Printing business that we cannot do cheaper than the larger printing concerns

Wedding Stationery
We keep on hand a good assortment of stock in Wedding Stationery, Calling Cards, At Home Cards, and can print them in fashionable Script or Old English Type, just as good as the Engraved at only half the cost.

Try us on your next job of **Book Printing** set up on our Linotype with new type, it gives a distinct tone and fine appearance which used type, hand set cannot impart.

The Advertiser The Manufacturers Life Insurance Coy. Money for Total Abstainers

The figures in the following table, show what percentage the actual cost of insurance has been of the expected cost during the last few years in the two classes of insurers in this Company in Canada.

	1911	1910	1909	1908	1907	1906
Abstainers Sec.	44.87 pc	32.30 pc	34.65 pc	38.22 pc	39.00 pc	35.93 pc
General Sec.	79.59 pc	51.28 pc	15.11 pc	82.11 pc	72.75 pc	60.64 pc

This is no matter of theory, but a proved fact. Total Abstainers make an actual saving in dollars and cents by placing the life insurance with us.

The Manufacturers Life
Write for rates giving age next birthday, to **O. P. GOUCHER, MIDDLETON, N.**
General Agent Western Nova Scotia
THE E. R. MACHUM, CO. LTD.,
Mgrs. Maritime Provinces, St. John, N. B.

Monuments

Dux, N. W. Brunswick and Aberdeen Granite.

Cemetery Work
lettering, Etc., Promptly Attended to

A. A. Rottler
Kentville

DUSTING VERSUS SPRAYING

Tests were conducted by the Experimental Station, Kentville, N. S. in 1917 to find out the relative efficiency of sulphur dust as compared with the regular lime-sulphur spray. Twelve trees were included in each plot. The sulphur dust, composed of 85 per cent finely ground sulphur and 15 per cent arsenate of lead, was applied by using a machine which blew it on the trees in the form of dust. The lime-sulphur, made according to the regular formula, 1 gallon of concentrate lime sulphur to 40 gallons of water, to which 2 1/2 lbs. of dry arsenate of lead was added to 100 gallons, was sprayed on the trees with the regular power spraying machine. Both applications were made on the same day, and uniform trees of the same varieties were used. Four applications were given, two before and two after bloom. The results obtained were as follows:—

	Dust	Spray
Total amt. used on plot of 12 trees	84 lbs.	210 gals.
Amt. used per tree, 4 applications	7 "	17.5 "
1 application 1.75 lbs		4.37 gals
Total time required on plot of 12 trees	45 min.	210 min.
Time required per tree		
4 applications 3.75 lbs	17.5 gals	
Time required per tree for 1 application	.94 "	4.37 "
Total cost of material on plot of 12 trees	\$5.58	\$2.31
Cost of material per tree, 4 applications	.46	.19
Cost of material per tree for 1 application	.11	.04

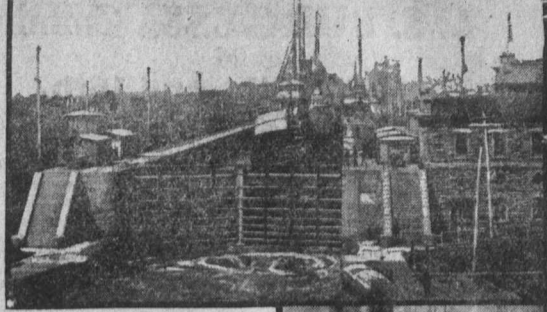
	Dust	Spray	
Sprayed	91.03	5.96	2.59
Not treated	79.93	12.24	7.80

How treated
Dust 84.2 12.77 .28
Sprayed 80.02 14.60 .00

Not treated 33.29 63.81 .52

From the above it would appear that under the seasonal conditions of 1917 the dust was equally efficient a fungicide as the lime-sulphur. This, however, may not always hold true and these results should not be considered conclusive. The dust spray gave a better control of canker worm and other insects. The foliage injury was also less where the dust was used, the foliage on these plots being better during the summer than on the sprayed plots. The comparatively cost of the two methods is given in the following table:—

	Dust	Spray
Total cost of material on plot of 12 trees	\$5.58	\$2.31
Cost of material per tree, 4 applications	.46	.19
Cost of material per tree for 1 application	.11	.04



Sault Ste. Marie.

If an author can be said to be the product of any particular district—and why not, just as much as a variety of flower, or fruit, or grain?—Alan Sullivan, the distinguished Canadian poet and novelist, should be most properly identified with Algoma, that curiously shaped county of Ontario, which stretches from the cities and settlements of the shores of Lake Huron and Lake Superior, up through the 2,900 square miles of the Missisquoi Forest Reserve, to the great furtrading territories three hundred and sixty miles north, where it is bounded by the Albany River, the chief tributary of James Bay. The southern shores of this county were colonized some thirty years ago at the instance of C. P. R. agents, by hardy pioneers from the older counties of Kincardine and Bruce, but the city of Sault Ste. Marie has its roots in the remoter past, as it was a trading post for the voyageurs, who travelled for the furtraders of Montreal into the far West. Alan Sullivan, whose father was Bishop of the Algoma Diocese, was at one time engineer of the work of construction and ballasting the Algoma branch of the C. P. R. between Sudbury and the Sault Ste. Marie, and uses the local color in several of his short stories. "It was fascinating," he says, "in those days to watch the psychological effect of the arrival of the track, or even of the survey party on the settlers. They brightened up, and looked at their farms with new eyes. They were in touch with the world that heretofore had seemed so distant." The bush fires, the miners,



Alan Sullivan.

the hunters, the mail carriers, the Indian agents, and the trappers have provided rich material for Alan Sullivan's stories, some of the best of which have been collected in the volume called "The Passing of Owl-But." More recently he has enlarged his field, and in his latest volume "The Inner Door," he takes for atmosphere the labor movement in a small industrial town. At the town is still in Ontario a place that makes it all the more interesting to Canadian readers, who take an interest in the new rapid growth distinctive Canadian literature.

	Dust	Spray
Total cost of application on plot of 12 trees	.60	2.80
Cost of application per tree for 4 applications	.05	.23
Cost of application per tree for one application	.01	.05

Assuming 40 trees to the acre, which is a general average, the quantity required for an acre and the time required to do the work and cost of same for four applications would be as follows:—

	Dust	Spray
Quantity used per acre	280 lbs.	700 gals.
Time required to do one acre	2 1/2 hrs.	11—2-3 hrs.
Cost of material per acre	\$18.62	\$7.70
Cost of application per acre	2.00	9.33
Total Cost	\$20.62	\$17.03

The sulphur-arsenate dust \$6.65 per 100 pounds. Ten lime-sulphur arsenate cost. 011 cents per gallon. The concentrate 25c. per pound. One team and 10 men were employed and their time was charged at the rate of 80 cents per hour, 50 cents for team and man, 30 cents for one man.

From the above it will be seen that it costs \$3.59 more to dust one acre than to spray it. The cost material is very much greater where the dust is used, but this is offset by a much less cost in application. There is a great advantage from being able to do the work quickly, thus giving time to do other important farm work.

ANXIOUS CONFERENCE AT BERLIN.

LONDON, Feb. 5—According to a wireless press despatch from Berne, a series of conference took place at Berlin yesterday. The German Emperor and Crown Prince received separately Vasil Radoslavoff, the Bulgarian Premier, Count Czernin, the Austro-Hungarian Foreign Minister, and Talaat Pasha, the Turkish Grand Vizier, after which the Emperor Presided at a Crown Council. Various conferences continued throughout the day. The Austrian Food Controller, Herr Hoefler, has arrived at Berlin to make urgent repre-

sentations to Germany regarding the necessity of helping Austria in her food difficulties.

FOR SALE—A horse Sleigh and harness at a bargain. Apply at ADVERTISER OFFICE. sw 31ns

FOR SALE—Mason and Risch upright Grand Piano in splendid condition, practically new, will be sold at a bargain for cash. Apply Advertiser Office, Box C. of.

WANTED— a girl typesetter. One with considerable experience preferred. Apply at once at Advertiser Office.

Minard's Liniment Cures Garget in Cows

Farm for Sale

The fine farm property owned by the late Howard Bligh, known as the Coloman Farm, situated about one-half mile East of Kinsmen's Corner, 8 1/2 acres, fine meadow. Farm cuts 50 to 60 tons hay. 1450 apple trees, 450 in full bearing, the other 1000 bearing this year. House and barns. This farm will be sold cheap in order to close the estate. If necessary half of the purchase money may remain on mortgage. For further particulars apply to

Howard Bligh & Sons, Ltd, of Halifax.

Minard's Liniment Cures Distemper.



P-N POINTS STAY SMOOTH
Used Only in Non-corrosive Inks
Ask Your Dealer.
Everett & Barron Co., Montreal, N. S.