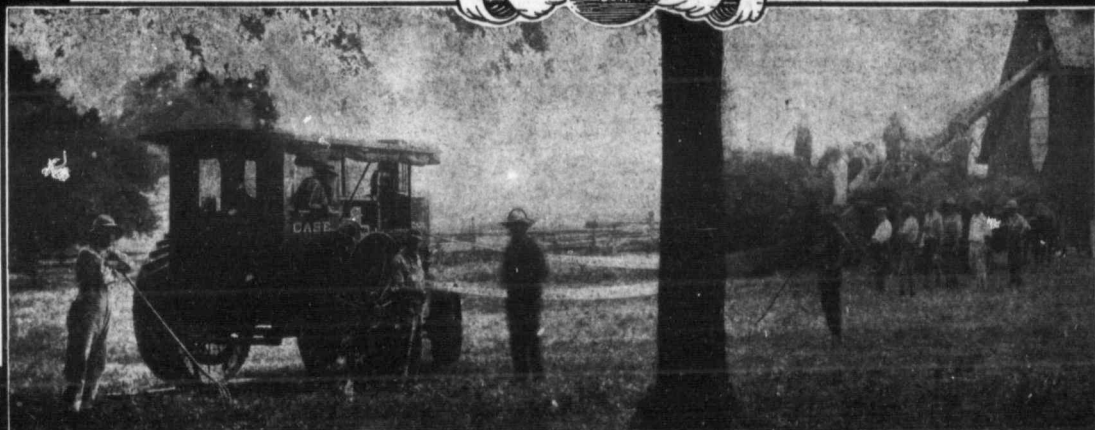


# CASE

THRESHING MACHINES



## A Proven Threshing Outfit

**S**OON after Case Steam Rigs became the acknowledged leaders, we began to develop what is now known as the Case 20-40 Kerosene Tractor. It is one of the very first tractors put on the market. Thousands are in successful operation, day in and day out.

The present model incorporates all the improvements of recent years. We know of none that equals it for all sorts of big farm operations, from plowing to threshing.

It will pull a 5 or 6-bottom 14-inch plow. It will haul a battery of other implements such as disc, spike or spring-tooth harrows and grain drills. For heavy belt work it has proven itself an ideal machine.

Hundreds of threshermen use the Case 20-40 for driving fully equipped 32x54 Case Threshers. It delivers its full rated horsepower steadily under the most trying conditions without overheating the motor.

You make no investments in experiments when you choose this Case 20-40. All the experimenting has been done long ago. It is ready to serve you, as it has served others, always ready, economical and easy to handle.

It is the ideal tractor for a farmer with a large acreage or for the custom thresherman.

In every particular it is tomorrow's kind of a tractor—in it you get all the advantages which will later become standard. But you get them NOW.

Write for complete information regarding this Case 20-40 Kerosene Tractor and our smaller sizes. Study specifications and make comparisons.



**J. I. Case Threshing Machine Company, Inc.**

(Founded 1842)

1279 Erie Street, Racine, Wis., U. S. A.

(776)