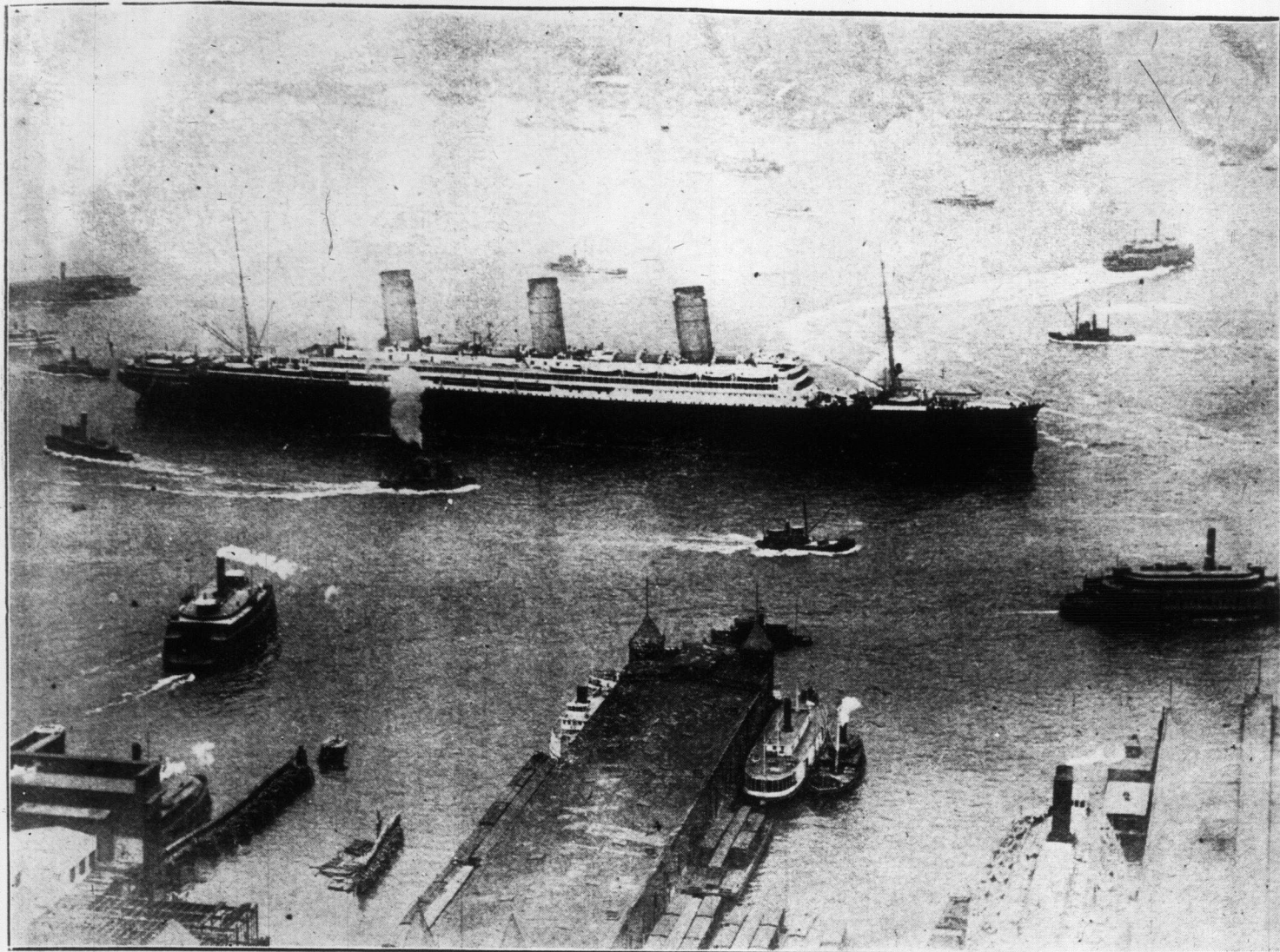
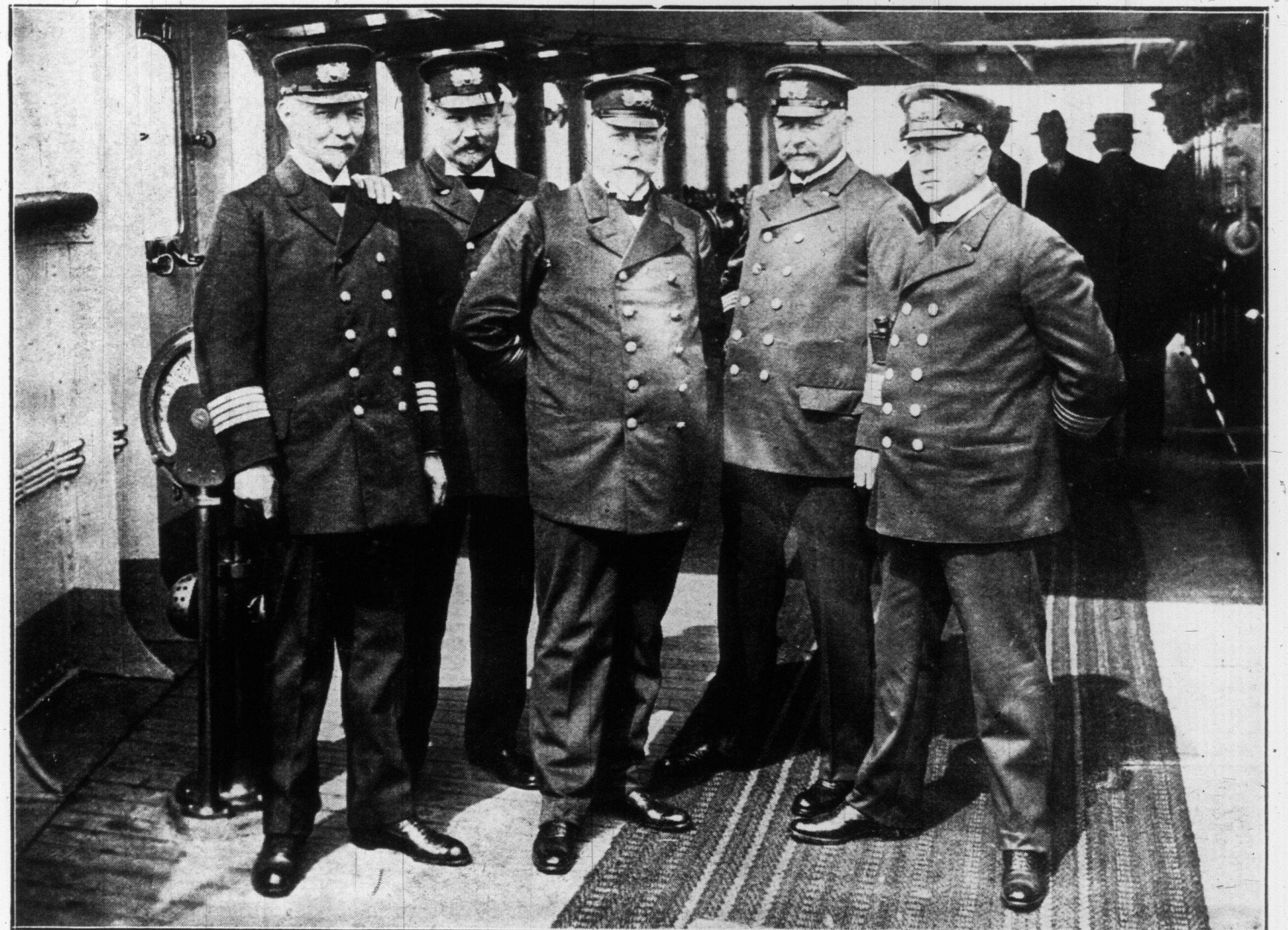


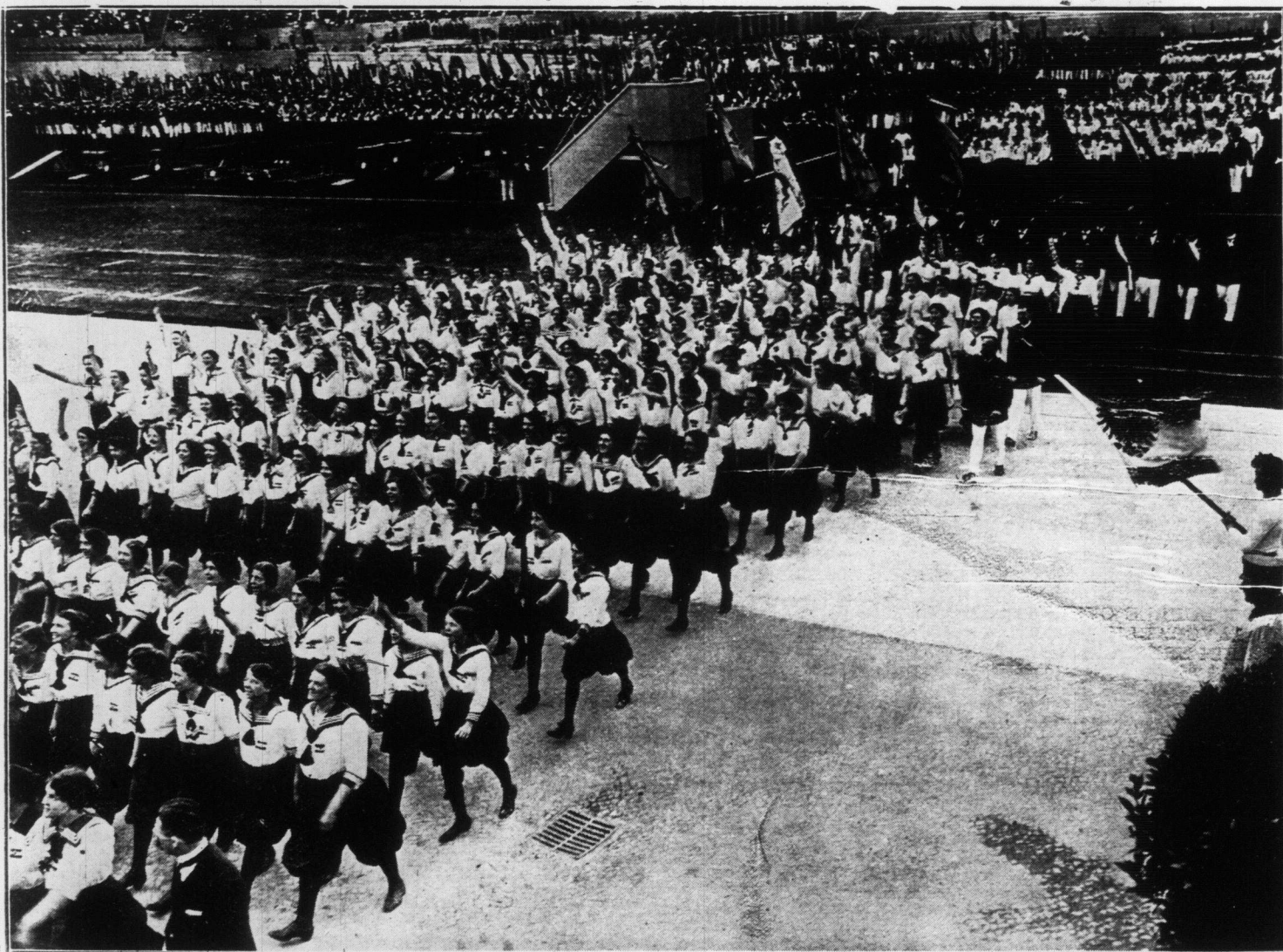
Newest Great Steamship---Opening of Berlin Stadium for Next Olympic.



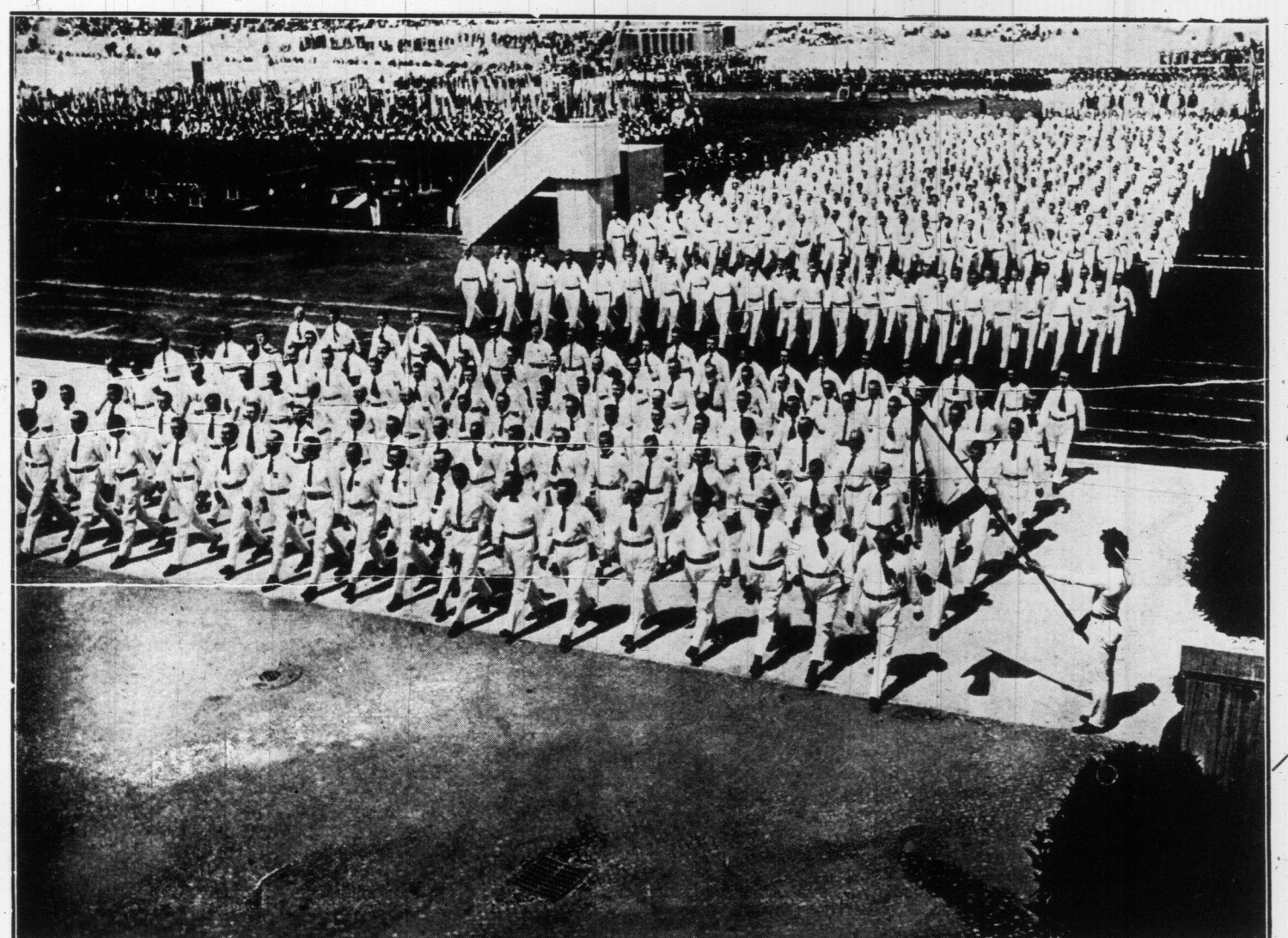
VIEW OF THE IMPERATOR, THE LARGEST SHIP IN THE WORLD, MADE FROM THE TOP OF THE WOOLWORTH BUILDING, THE TALLEST BUILDING IN THE WORLD.



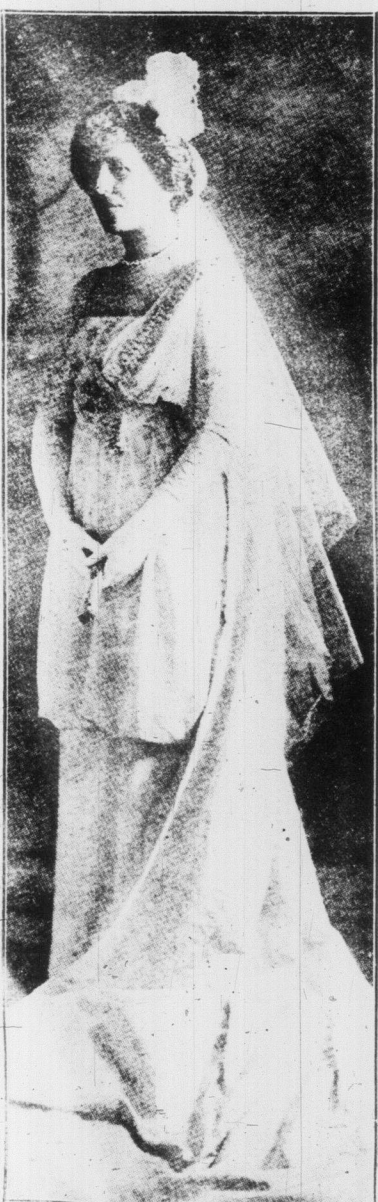
MEN IN CHARGE OF THE IMPERATOR, WORLD'S LARGEST STEAMSHIP. FROM LEFT TO RIGHT—CAPTAIN H. VON MEIBOM, CAPTAIN K. SCHEDELIG, ADMIRAL RUSER, COMMANDER: CAPTAIN K. HETTER AND CAPTAIN A. HOEFER.



PARADE OF GERMAN WOMEN ATHLETES AT THE INAUGURATION OF THE STADIUM FOR THE OLYMPIC GAMES OF 1916.



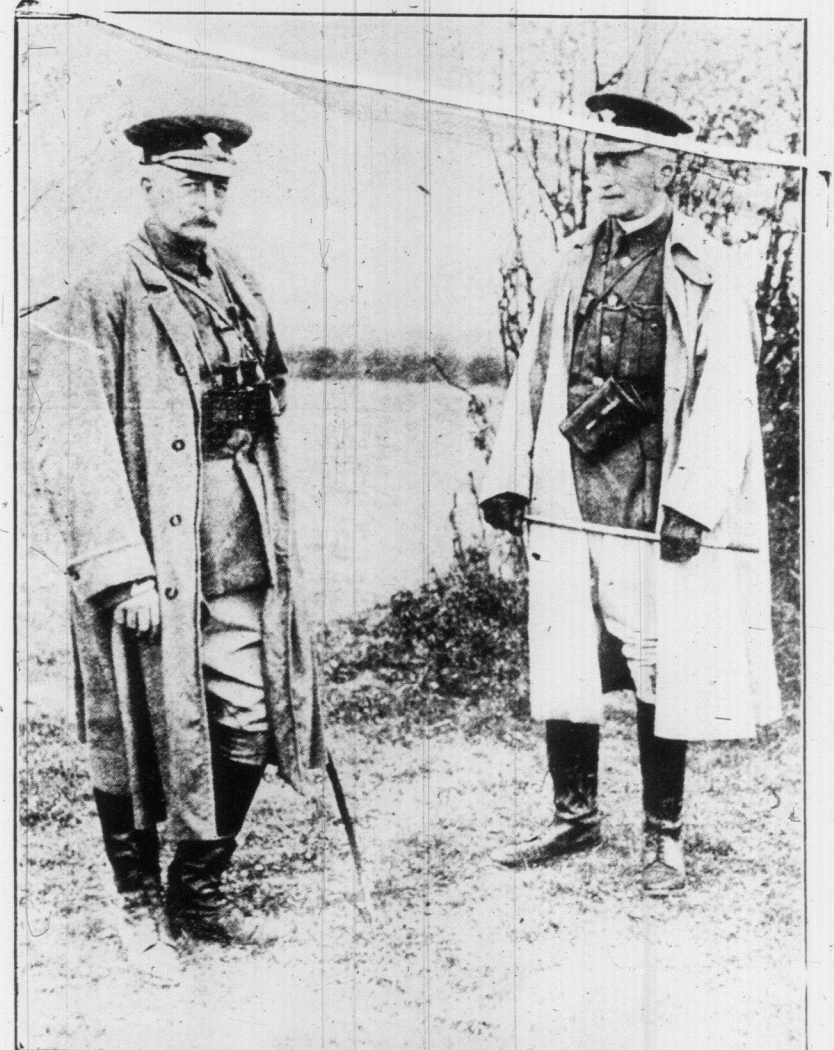
PARADE OF GERMAN MEN ATHLETES AT THE INAUGURATION OF THE STADIUM FOR THE OLYMPIC GAMES OF 1916.



A gown court gown worn by Mrs. Caldwell. It is fashioned of white broche beautifully draped.



DE LA SALLE INSTITUTE ORCHESTRA.



MAJOR WILSON (ON RIGHT) THE PROSPECTIVE CONSERVATIVE CANDIDATE FOR NORTH MANCHESTER AND COLONEL THE RIGHT HON. GEORGE WYNDHAM, WHO HAS REPRESENTED DOVER IN THE CONSERVATIVE INTEREST SINCE 1889 AND WAS CHIEF SECRETARY FOR IRELAND FOR FIVE YEARS, IN CAMP WITH THE CHESHIRE YEOMANRY AT LLANGOMMARCH WELLS.