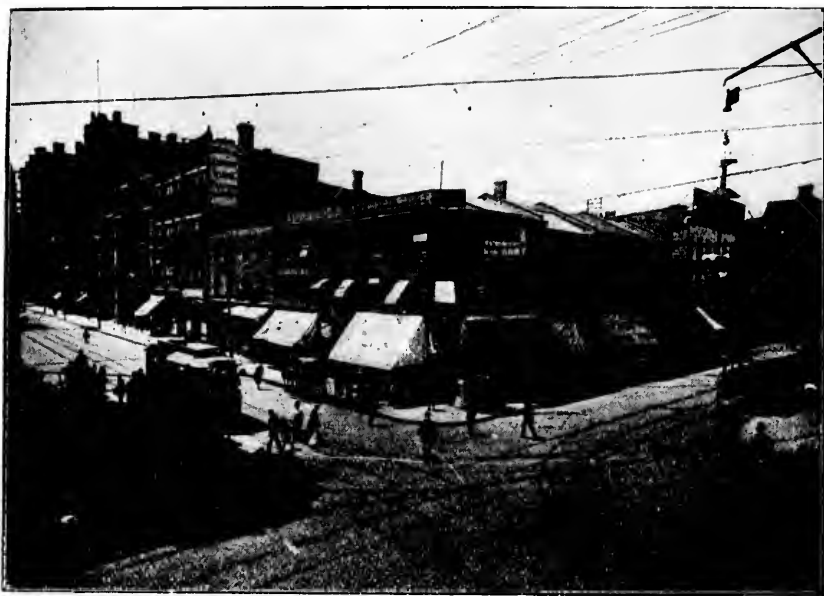


During the year 1893, over 21,000,000 millions of people were carried, with a car mileage of about $8\frac{1}{2}$ millions of miles. There are at present about 80 miles of track, and 150 motor cars, which have trail cars during the summer season. Some idea of the extent of the street railway system of Toronto may be had from these figures, but a glimpse into the construction shop where all the cars are constructed, and into the great power station situate at the corner of Frederick and Front Streets will at once give an idea of this gigantic concern. Connection is made at the west end of the King and Queen Street line with the Mimico



JUNCTION OF STREET RAILWAY TRACKS, COR. KING AND YONGE STS.

and Lake Shore Electric Railway, which follows the shore westward for a distance of six miles. From the double decker cars on this line an excellent view of the harbor, island and city may be had, and upon bright clear days the banks of the historic Niagara River can be distinctly seen across the lake. As soon as the passenger crosses the River Humber westward, leaving the City behind, he glides along the scenic route, over hills and creeklets, through orchards and market gardens while Lake Ontario is spread out before him to the left like a boundless ocean. A trip over the Mimico and Lake Shore Electric Railway should not be missed by any.