

Figure 9.1: Backbone Naming for London Region

9.2 Intermediate Systems - (Routers)

- a. Routers are attached to multiple backbones and Wide Area subnetworks. Routers reside in a single physical location, and therefore can have a geographic component within their naming convention. As with backbones, there may be multiple routers per location and the routers require a numeric component within their naming schema. Figure 4 demonstrates the geographic location, R (router) and a 2 digit numeric numbering sequence.

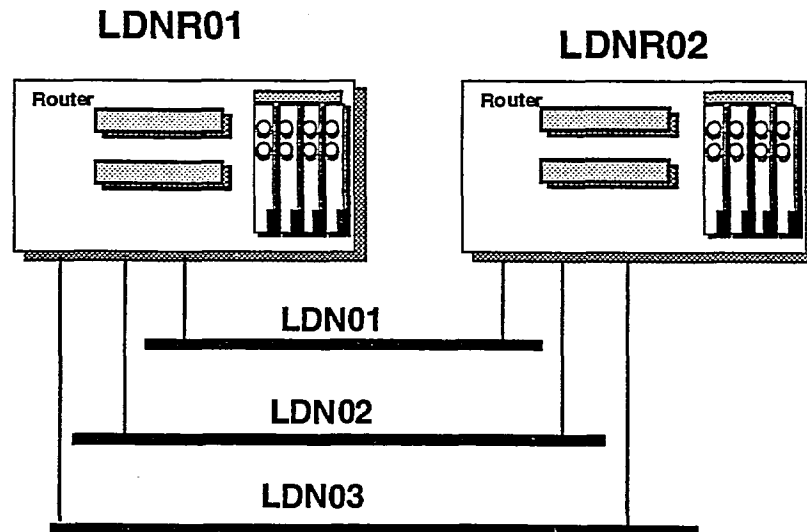


Figure 9.2: Router Naming Scheme