

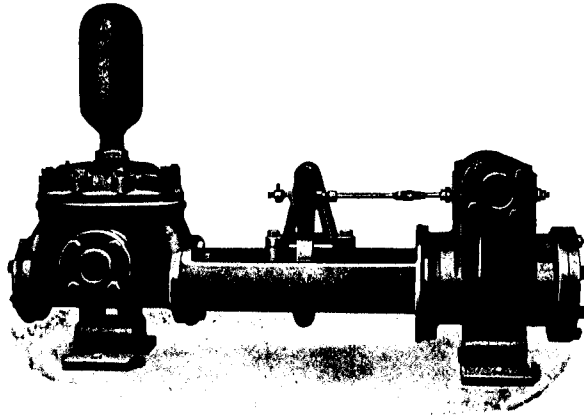
KNOWLES STEAM PUMPS

Manufactured by The Knowles Steam Pump Works

REPRESENT MORE THAN IRON

Steel, bronze and labor costs entering into their construction.

When you buy a Knowles Pump you get the benefit of fifty years experience in pump building.



Knowles Single Horizontal Boiler Feed Pump, Piston Pattern.

The Knowles Simplex Pumps have many advantages over the old type Duplex Pumps. Some of these advantages are

Longer stroke—therefore less wear, longer life and less repairs.

Full stroke at all times—therefore a saving of 25% up in steam consumption.

One half the number of stuffing boxes.

Fewer joints and less piston packing to keep in order.

Simplex Boiler Feed Pumps are of extra heavy construction and are built for 250 pounds per square inch working steam and water pressure. They are sold at approximately the same price as so called "trade pumps."

Knowles Pumps carried in stock at our different warehouses.

Write for Catalogues JBK 876 or 886 to the nearest office of the

Sole Canadian Sales Agents

MUSSENS LIMITED

MONTREAL 318 St. James Street **TORONTO** 155 W. Richmond St. **COBALT** Opp. Right-of-Way Mine **WINNIPEG** 258-261 Stanley St. **CALGARY** 10th Ave. & 3rd St. E. **VANCOUVER** 365 Water St.

QUEBEC
71 Maple Ave.

ST. JOHN, N.B.
57 Smythe St.

HALIFAX.
78 Granville St.