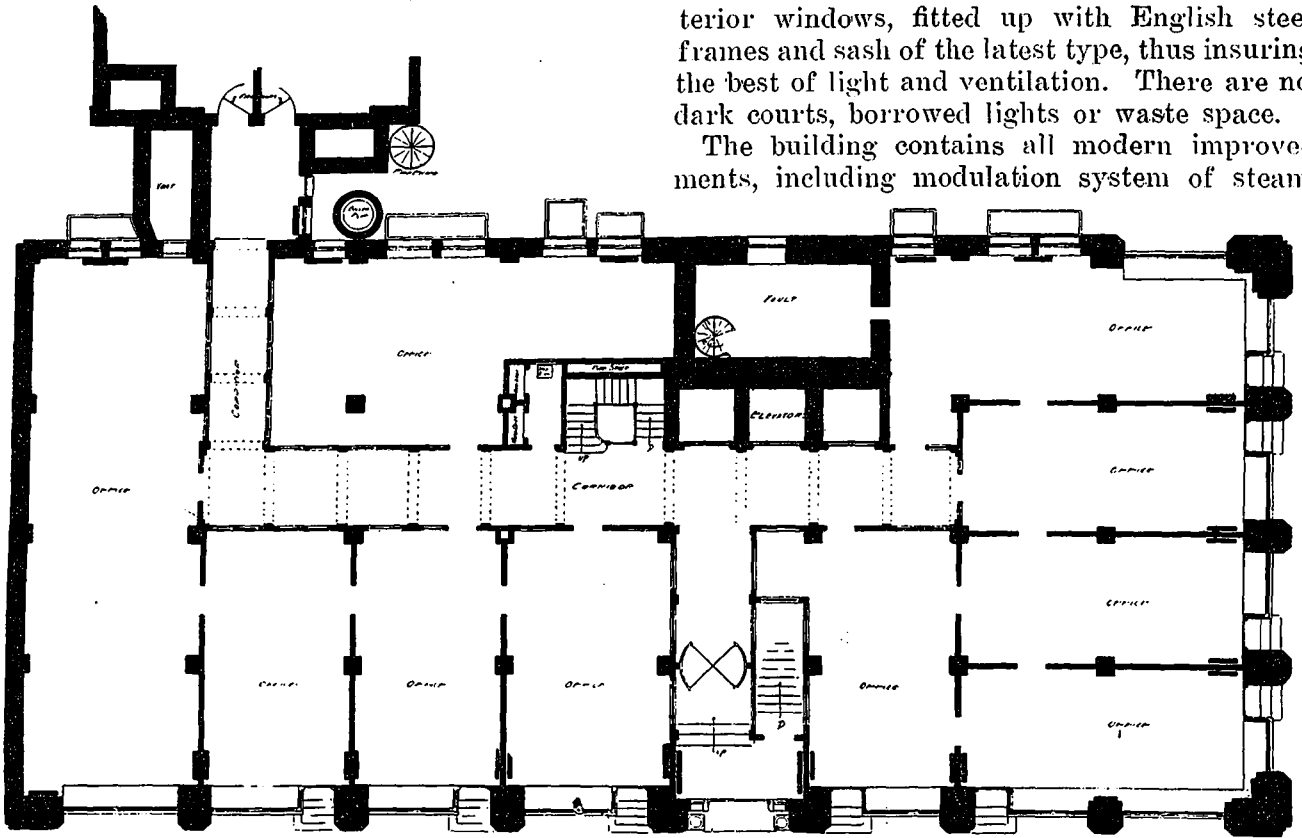


terior windows, fitted up with English steel frames and sash of the latest type, thus insuring the best of light and ventilation. There are no dark courts, borrowed lights or waste space.

The building contains all modern improvements, including modulation system of steam



FIRST FLOOR PLAN, EXCELSIOR LIFE BUILDING. E. J. LENNOX, ARCHITECT.

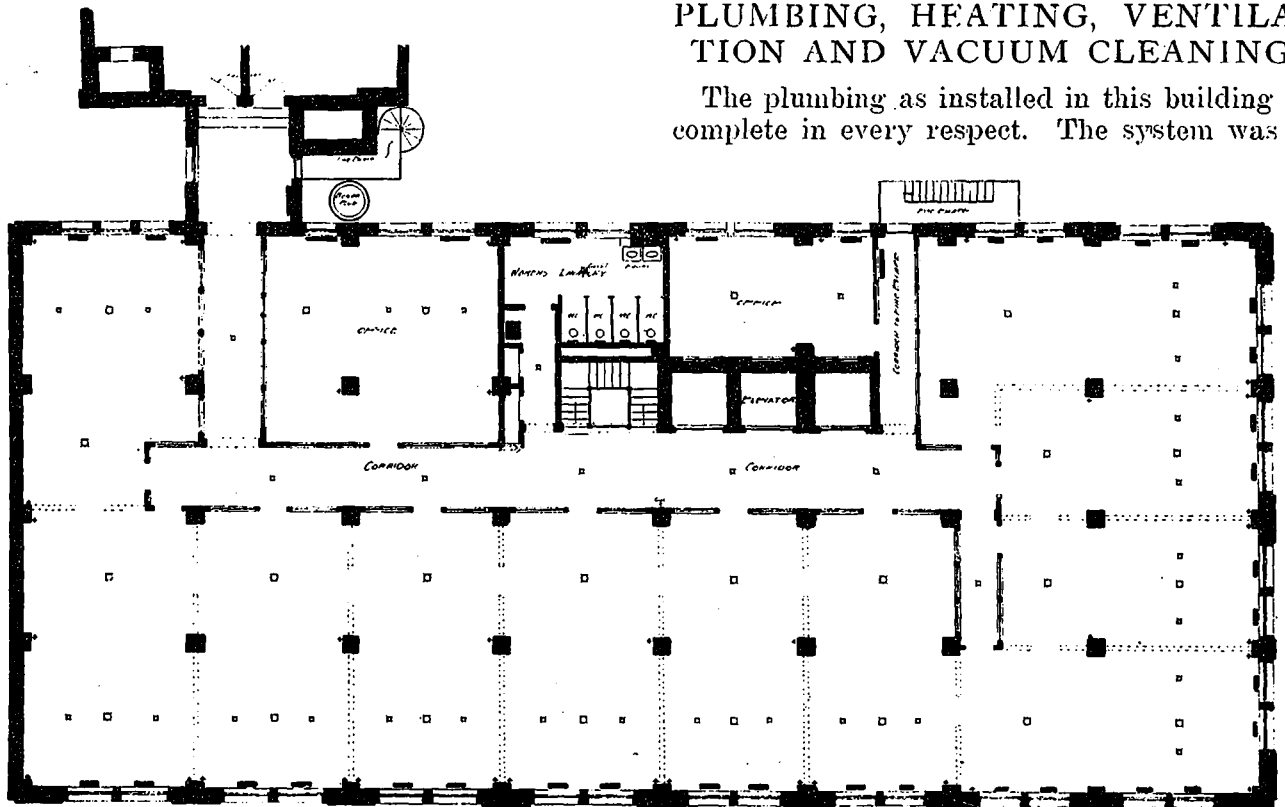
cess to splendid accommodation to all floors, the importance of providing an efficient and quick service being fully realized. Three of the latest and up-to-date elevators are installed, so as to give quick access to all parts of the building.

The building throughout is lighted by ex-

heating (thus obviating all noise in pipes), vacuum cleaners, mail chutes, connections for telephone, telegraph, ticker and messenger call service wires, and the latest and most modern system of plumbing and conduit electric wiring.

PLUMBING, HEATING, VENTILATION AND VACUUM CLEANING

The plumbing as installed in this building is complete in every respect. The system was a



TYPICAL FLOOR PLAN, EXCELSIOR LIFE BUILDING. E. J. LENNOX, ARCHITECT.