

# Miners Wanted To Chew BULL DOG TOBACCO,

Because it is the only Tobacco  
which does not excite Thirst  
for Water after using  
**TRY IT!**

The St. Lawrence Tobacco Co., Ltd.  
—Montreal—  
—W. B. Reynolds, Halifax Representative—

## MINING SHOVELS

our 'FENERTY' Brand  
COOK'S PAN SHOVELS,  
COAL TRIMMERS SHOVELS,  
SCRAPER SHOVELS, ETC.  
—ARE USED BY—

*The Largest Mines in Canada*

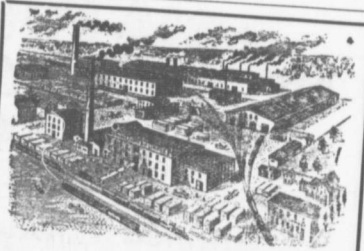
MANUFACTURED BY  
**The HALIFAX SHOVEL CO.**  
HALIFAX, N. S.

ALL GOODS GUARANTEED.

*Genuine Garlock Parkings*  
FOR ALL PURPOSES.  
**Pipe and Boiler Coverings,  
ENGINEERS SUPPLIES.**

also  
"Tauril" High Pressure Jointing  
the Best Sheet Packing yet  
Produced.  
**THE GARKOCK PACKING CO.**  
HAMILTON, ONTARIO

Used by Collieries in Lancashire, Stafford-  
shire & Yorkshire  
**'XTERRA'** COLLIERY LAMP OIL  
For Marasut, Mussole Detector or Closed Lamp.  
PURE WHITE FLAME. LOW PRICE.  
**E. WOLASTON, Dutton St. MANGHESTER**  
Sole Representatives for Canada, AUSTEN BROS.,  
Halifax, N. S.



—MANUFACTURERS OF—  
**RAILWAY STREET and MINING CARS,**  
Church Pews,  
Fittings for Stores, Schools, &c.  
A SPECIALTY.  
Large Stocks of Foreign and Domestic Lumber on Sale.  
**Rhodes, BUILDING MATERIALS GENERAL**  
**Curry & Co., Ltd.**  
Branch ROBBIE STREET HALIFAX, N. S. **AMHERST N. S.**

## INTERCOLONIAL RAILWAY

Connection for  
**OCEAN LIMITED**  
(Canada's Summer Train)  
leaves **STELLARTON 7.40 a. m.**  
daily except Sunday.  
arrives **MONTREAL 7.35 a. m.**  
daily except Monday.

Through Wentworth and Matapedia  
Valleys in Daylight.

Connecting in Montreal, Bonaventure Union Depot.  
—with the—

**Grand Trunk Railway's  
INTERNATIONAL LIMITED.**

LEAVING MONTREAL 9 00 A. M.  
ARRIVING TORONTO 4.30 P. M.  
and for  
**Detroit, Chicago and the West.**