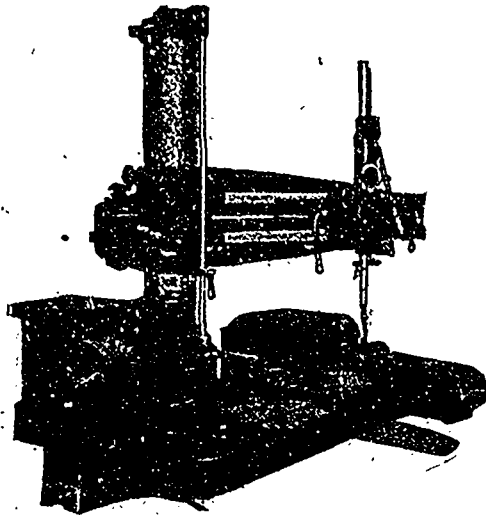


How Is Your Shop Equipped?



Westinghouse Type S Variable Speed Motor
Driving Bickford 60" "Radial Drill."

If your machine tools are not electrically driven, you are not getting the best results.

Electric Drive

Increases Production,
Decreases Cost.

There are various systems employed in machine shop work.

The Westinghouse Systems

and others are described in Publication 13,001 "Machine Tool Drive"; it will interest you, write for a copy.

Canadian Westinghouse Co., Limited

General Office and Works, HAMILTON, ONTARIO.

Lawlor Bldg., King and Yonge Sts.
TORONTO.

152 Hastings Street.
VANCOUVER.

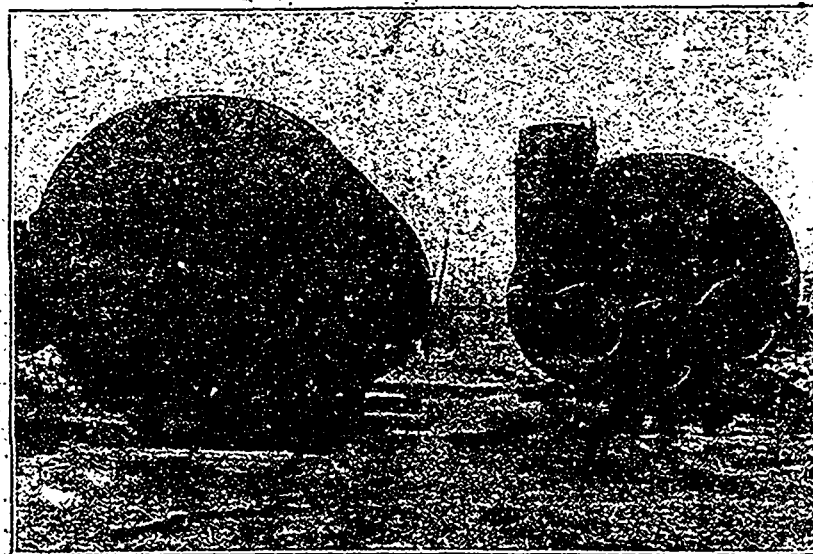
For particulars address nearest office
HAMILTON.

922-923 Union Bank Bldg.,
WINNIPEG.

Liverpool & London & Globe Bldg.,
MONTREAL.

184 Granville Street,
HALIFAX.

BOILERS FOR ALL SERVICES



Two Marine Boilers built for Richelieu & Ontario Navigation Company's Steamer "CAROLINA,"
length 21 feet, diameter 13'4", height 11'10", 126 4" tubes, weight 37½ tons each.

The JOHN McDOUGALL CALEDONIAN IRON WORKS CO., Limited
MONTREAL

When writing to Advertisers kindly mention THE CANADIAN MANUFACTURER.