

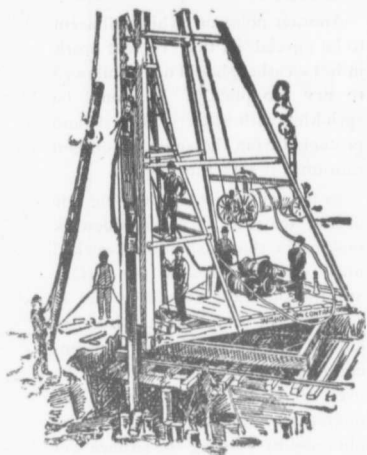
The Canadian Bridge Co., Limited

WALKERVILLE, ONT.

MANUFACTURERS OF

RAILWAY AND HIGHWAY BRIDGES

Locomotive Turn Tables,
Roofs, Steel Buildings and
Structural Iron Work of all descriptions



Pile Driving

on land or water by Steam Pile Drivers or Drop Hammers.

Portable Boilers, Hoisting Engines, Pumping Machinery
To Let—Bridge Building, Trestle Work
Wharves, Dams, Diving Submarine
Work and General Contracting.

WM. HOOD & SON
10 Richmond Sq. - MONTREAL

CANADIAN EMPLOYMENT AGENCY

Licensed Labor Contractors

.. 182½ St. Antoine Street ..
MONTREAL

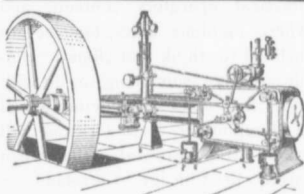
All classes of labor, skilled and otherwise
supplied at short notice.
special attention given to gangs for construc-
tion, lumber camps, etc.

All Orders given Special Attention

The Ontario Accident Insurance Co.

ACCIDENT, EMPLOYERS, ELEVATOR
AND GENERAL LIABILITY

104 St. Francois Xavier St Montreal



LEONARD CORLISS ENGINES

Girder Frame and
Heavy Duty Styles

LEONARD AUTOMATICS AND BOILERS

for Steam Plants, Complete

E. LEONARD & SONS, LONDON, CANADA

M. BEATTY & SONS LIMITED

WELLAND, ONT.

DREDGES, DITCHERS, DERRICKS

Steam Shovels, Submarine
Rock Drilling Machinery, Mine
Hoists, Contractors' Machinery

HOISTING ENGINES

Centrifugal Pumps for Water
and Sand, Stone Derricks,
Clam Shell Buckets, Coal Tubs,
Concrete Tubs.



PILE DRIVING

and Foundation Work.

By 5-ton Automatic Steam Pile Hammer,
Water Jet or Drop Hammers, Dock Build-
ing, Submarine Work and Dredging.

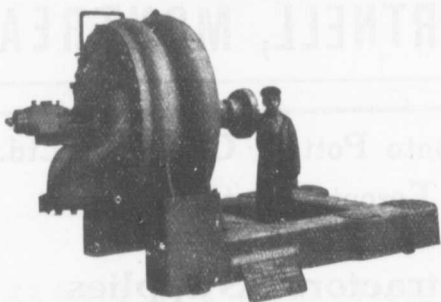
BUILDING MOVER AND WRECKER

General Contracting.

JNO. E. RUSSELL, - Toronto
908 Queen St. E.—Phone M. 2007.

WORTHINGTON PUMPS

FOR WATERWORKS SERVICES



Worthington 2 Stage Turbine Pump for the Winnipeg
Water Works, Capacity 5,000,000 per 24 hours.

We Have Two Stage Pumps in Operation Delivering Against 160 Pounds Pressure

"WORTHINGTON" TURBINE PUMPS

for heads up to 2,000 feet, are
Reliable, Durable, Efficient
and exceedingly simple

WE ALSO MANUFACTURE

Boilers, Tanks, Filters Etc.

The John McDougall Caledonian Iron Works Co.,
ESTABLISHED 1852 Montreal. Limited.