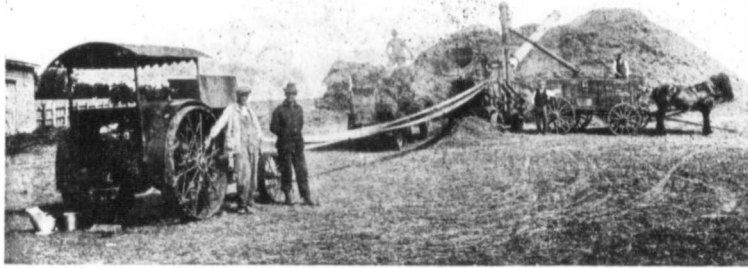


A Merry Xmas and A Prosperous New Year To Our Hosts of Friends and Friends to Be

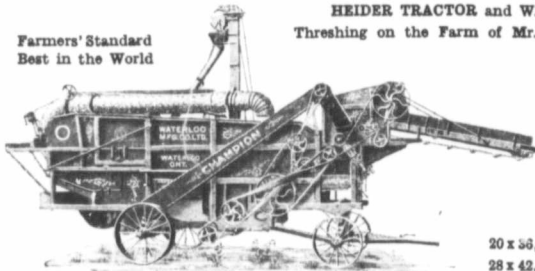
We've
Won
Again



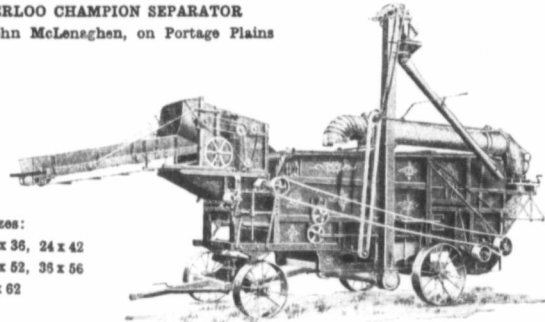
Merit
Always
Wins

HEIDER TRACTOR and WATERLOO CHAMPION SEPARATOR
Threshing on the Farm of Mr. John McLenaghan, on Portage Plains

Farmers' Standard
Best in the World



WATERLOO CHAMPION SEPARATORS. Real Grain Savers. Built for the People.—Approved by the People.



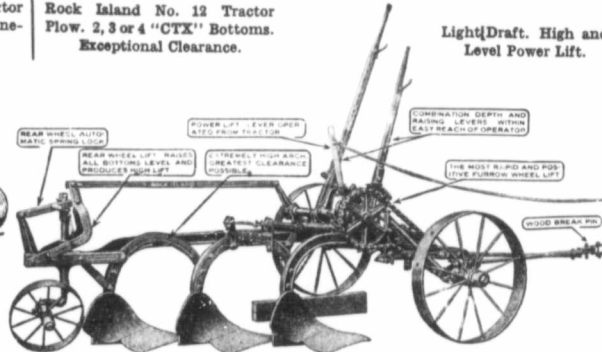
Sizes:
20 x 36, 24 x 36, 24 x 42
28 x 42, 33 x 52, 36 x 56
40 x 62



Rock Island No. 38 Tractor
Disc Harrow. Absolute One-
man Control.

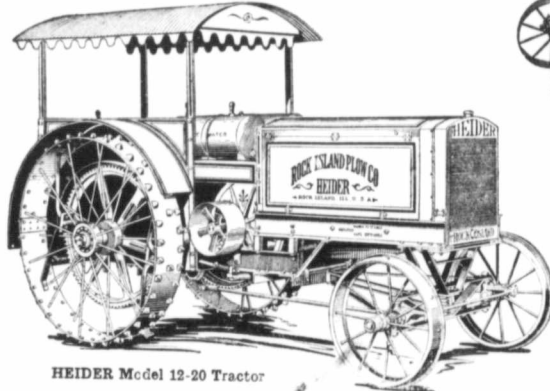
Rock Island No. 12 Tractor
Plow. 2, 3 or 4 "CTX" Bottoms.
Exceptional Clearance.

Light Draft. High and
Level Power Lift.



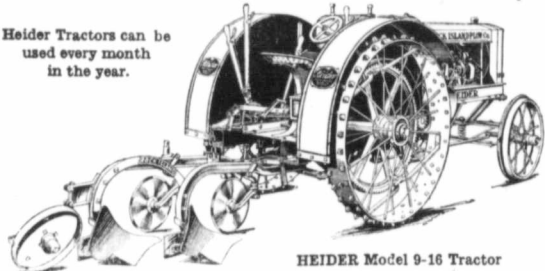
Rock Island Power Disc, in two sizes, 8 and 10 feet. Both Front and Rear Harrow Absolutely Flexible.

Heider Tractors are equipped with Heavy Duty Waukesha Motors. Heider Special Friction Drive. Seven Speeds Forward—Seven Reverse—Four Wheels—Four Cylinders—Strong and Rigid Frame. Burn Kerosene Successfully.



HEIDER Model 12-20 Tractor

Heider Tractors can be used every month in the year.



HEIDER Model 9-16 Tractor

CATALOGUE FREE ON REQUEST

Winnipeg Agency
A. T. DAVIDSON
328 William Avenue

The Waterloo Manufacturing Co., Limited
PORTAGE LA PRAIRIE, MAN.
BRANCHES AT REGINA AND SASKATOON, SASK.

Alberta Distributors
UNITED ENGINES AND
THRESHERS, LTD.
Calgary and Edmonton