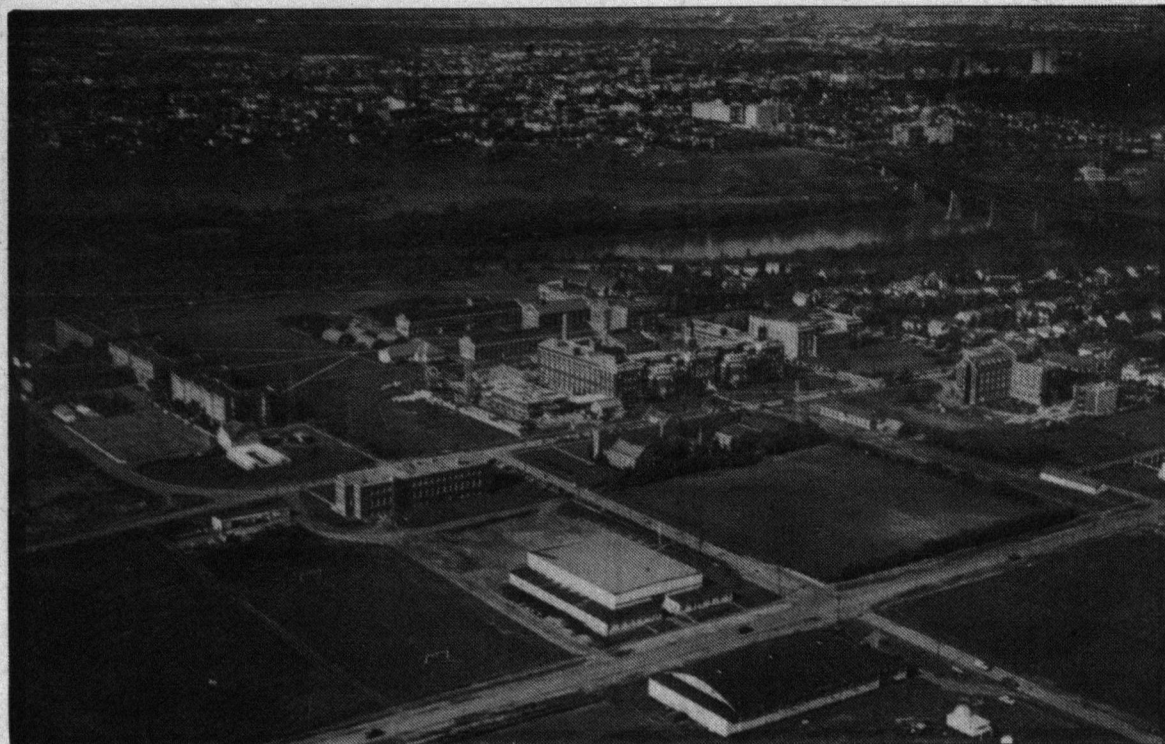


Canvass '87...How does the Gateway



The university campus then...

photo courtesy University Archives

Thirty-nine years ago, as part of a then-weekly feature called *Campus Canvass*, the Gateway conducted a survey of 104 students. The question was "Do you believe that the Gateway is adequate as a student newspaper?"

The results were not encouraging. In 1948, apparently, the Gateway was an absolutely terrible newspaper. Or so the student population thought: the answer was a solid 100% NO.

In 1987, we decided to redo the survey, asking the same question. This time around, however, we would also ask other questions in order to get a handle on what U of A students really think about their newspaper.

The results this time were, to say the least, much more encouraging. Among the 104 students we asked, the response was as follows:

- Yes 67.3%
- No 26.0%
- No opinion 6.7%

A study of the 1948 survey reveals

that although students would agree that the Gateway was inadequate, that was in fact the *only* thing they could agree about when it came to making specific suggestions for improvement.

The results were very much the same this time around.

News reporting drew some critical comments, but there were others who thought the Gateway does a good job:

1. The articles are often confusing, and there isn't enough background given.
2. The paper is biased, it's too leftwing, and its editorial policy is unsupportable.
3. It's not really too outstanding, but kinda nice (heard often).
4. The newspaper is informative,

and it has good articles.

5. The reporting is far too political.

6. Too limited in what it reports — too trendy, too liberal (heard several times).

7. There isn't enough coverage of campus events.

8. There's too much concentrating on campus events, and not enough on international issues.

One area that most students, even while saying overall the Gateway is adequate, found desperately in need of improvement is its editorial policy:

1. Be more controversial.
2. Editorials are unadulterated garbage — where do they get their opinions from?
3. Not enough research done.
4. The Gateway concentrates too much on international garbage, and socialist drivel.
5. Too left wing.
6. Because of their fear of libel, the Gateway has been too scar-

Survey by Alex Shetsen.

Thanks to Roberta Franchuk and Cam McCulloch for creative input and additional research. Special thanks to Russell Schulz for running the graphics on the Macintosh.

Question of the Week: Do you think that the Gateway is an adequate student newspaper?

Yes 0%
No 100%

Each of the 104 persons questioned was asked to comment and to name the three features of the Gateway which he preferred. Many comments were in absolute contradiction to each other, and in its breadth of interest the student body showed great variety.

The following is a list of Gateway features in order of preference.

Between and Between	51
Sports page	34
Campus Canvass	13
Editorials	11
Fruit and Nuts	8
Window on the World	5
H. V. Weekes	4
Queen contest photographs	4
Miscellaneous	11

The great difference of opinion on the faults of the Gateway showed it would be very difficult to publish a paper which would appeal to everyone.

Mr. Editor drew fire for various reasons:

1. "The editor is too d—n partial. More independence of editor and staff in relation to clubs is needed. If an activity is a flop, they should say so. Just a glorified 'Alarm'."
2. "Not enough articles of high literary standard. Poor sports commentator; not adequate in news coverage."

The original survey, published Feb. 10, 1948

ed to try anything controversial or worthwhile.

7. They have too slanted an editorial policy.

8. I wish they'd find an editorial policy instead of printing anything that comes to them.

9. Their editorial policy is determined too much by the SU.

10. They go out of their way to curse Students' Union politicians instead of opening their eyes to what's going on around them.

When it came to Gateway special features, student opinion was pre-

dictably split on everything:

1. I really like the personals (this was the single comment heard most).
2. Why do you print obscene garbage like the personals?
3. I really enjoy the comics.
4. Comics are terrible (these two comments heard in equal numbers).
5. Shoot whoever does the comics.
6. Scrap Emma's Bar and Grill and concentrate on more serious features.

INCOME TAX RECEIPTS for Tuition Fees for Income Tax Purposes

You may pick up:

An official fees receipt (if fees are paid in full)

at the

Student Assistance Centre

in the **Northeast** corner of the **Main** floor of the

Central Academic Building

between

8:30 a.m. and 6:00 p.m.

February 9 - 11, 1987 (Mon. - Wed.)

and

8:30 a.m. and 4:00 p.m.

February 12 - 13, 1987 (Thurs. - Fri.)

Please Bring Identification

Office of the Comptroller
Fees Division

DIE kills request

RE: Request for Enforcement by hearing on this matter.
Floyd Hodgins, 30 January 1987.

After giving Mr. Hodgins' complaint careful consideration, the Discipline, Interpretation and Enforcement (D.I.E.) Board, pursuant to Bylaw 3500 s.25(2)d, has decided not to entertain his request for a

Respectfully submitted,
Discipline, Interpretation and Enforcement (D.I.E.) Board

Scott A. Watson
Chairperson (1986-87)

let's press



Deli Sandwiches made to order
Quality Selection of Fresh Salads
Homemade Soup
Gourmet Desserts
Superior selection of
Breakfast Pastries
Daily Hot Specials

Licensed for Beer and Wine

HOURS: 7:00 a.m. - 7:00 p.m.
Main Floor SUB

Call 432-2090 for all
your catering needs.

