

They say truth is stranger

Pizzaburgers? How gauche!

BINGHAMTON, N.Y. (I.P.) - Since coming to SUNY-Binghamton from Yale University two years ago, William J. Hickey, director of Auxiliary Campus Enterprises and head of campus dining services, has put new zip into institutional eating, which he says "has come a long way since the early 1960's."

Last year such dishes as Lobster Bisque, Quiche Lorraine, Hungarian Goulash on Noodles, Blintzes with Sour Cream, and Broiled Scallops were some of the everyday menu items. There were also special menus such as a Scandinavian breakfast with high protein foods (cheeses and fish); an Oktoberfest, complete with beer; Chinese, Mexican and Kosher Deli Nights, Ski Lunches, Midnight Brunches, Italian Street Festivals.

Health foods and vegetarian meals are served in

Dickinson dining hall. Here in addition to cottage cheese and tossed salad at lunch and dinner, wheat germ, honey, and peanut butter are offered at all meals. Students in the four college dining halls can have unlimited helpings of all foods, except steak.

Mr. Hickey is proud that 95 percent of all baked goods served is made on campus in the University's bake shop. This includes such mouthwatering fare as tortes, fruit cobblers, pies, doughnuts, and French, Italian, rye and pumpernickel breads. Also created on campus are the huge birthday cakes, elaborately decorated and big enough to feed 1,000 which are served each month in the college dining halls to honor all the students having birthdays that month.

Mr. Hickey admits his object is to make campus dining "exciting." He attributes his success in feeding last year's hungry dorm residents for just over 84 cents a plate to buying in huge quantities, planning carefully, and "hitch-hiking" on student fees ideas.

Conservation on the rocks

PITTSBURGH (ZNS-CUP) - Researchers at the Westinghouse Laboratories in Pittsburgh are testing a new system for heating and cooling buildings by using - believe it or not - a giant ice cube in the basement.

The "ice-cube" would come in the form of a 20-foot tank which holds 8000 gallons of water and would be hooked up to a heat pump.

During the winter, Westinghouse says, the heat pump would extract heat from the 8000 gallons, slowly turning the water to ice, while using the siphoned off energy to heat the house.

In the summer, the pump would run backwards, drawing heat out of the house into the water tank and gradually melting the giant ice cube to cool the house.

Westinghouse says that the "ice-cube" system would use 50 percent less energy than the conventional methods of heating and air conditioning homes today.

Consumption on the rise

SAN FRANCISCO (ZNS-CUP) - A California nuclear physicist and weather expert reports that if energy consumption continues to increase at its present rate, the entire world may be flooded within the next century.

Doctor Howard Wilcox, in a recently published book called *Hothouse Earth* reports that humans are increasing their energy use at an incredible rate of four to six percent per year. As a result, Wilcox says, people are throwing more and more waste heat into the earth's atmosphere.

The doctor warns that if countries continue their present rate of industrial growth, the added heat may cause a worldwide temperature rise of between one and three percent within the next 80 years.

This added heat, Wilcox says, will make the earth like a hothouse, causing the polar ice caps to melt and to flood most of the population centres of the world.

letters

krep

Was never riting noospepper befour. But dis time hym mad. Wen you got noo Aditer, pepper looking more batter for wun, mebee too, tree ishoo an I'm tinkin, end I quode, mebee now dey kleening up akt an getting rid of Newfy jokes, diry pixchures hend garbach.

Is looking almos lyk noospepper! Den dat ishoo on April Fuls Day wid horses hasses making lyk horses hasses on front of paje. Is mebee bes view but am expecting lyk dat somting in chip rag but not in Unversisity pepper. Profishincy in English nod being problem! Hoo leding in dem bums in first plase? Hoo printing dat krep? Plees kencingill sumscripshun! P.S. Mine boy wid P hech D sed "Gees Kris, I'm grejuating dis plase?" Kencel dat too!

KREM

I just wanted to ask you guys if it's true that CBS won't be on cable this fall - somebody was telling me that they were fed up with the poor quality of their feeder station, KXLY (XL 4 Spokane), and that they wanted to sell it all to KReM (No. 2 on your dial, but No. 1 in your heart).

The reason I ask is that if there's no more CBS, then how can I watch Captain Kangaroo and Match Game '76 and especially Dialing for Dollars? (my sister-in-law won \$13.00 once!)

Chuck Allard, M. D.

kent be tru

The Department of History wishes to announce that any recent rumors about nepotism running amock here are totally false and pretty damn ignorant. You make it sound like we've all moved into second-floor Tory and are hanging our laundry in the stairwell.

Anybody seen those blue socks around?

WJ Jones Chairman
RT Jones Ass't Chairman
AN Jones 2nd Ass't Chairman
PB Jones Director of Paper
TR Jones Director of BIC Pens
JQ Jones Director of those neat little paper clips

kencelled

Thank God for the demise of CBS on cable. They had to have just about the worst programming of any station. And that

Peter Birnie
Sci. I

news team looked like something out of Fireball XL5!

Now if we can just get rid of that upstart Allard and his stupid little independent station, we'll have it all sewn up!

Any chance of getting that cute weather girl to replace you-know-who on Popcorn Playhouse? You'd really see the corn pop then!

Dr. Rice
alias Sunwapta Sam

kid stuf

For fifteen years I've sat and let four year olds pee on my lap, throw up in my gold mine, and pull all the hair out of my moose. Now they tell me I'm being replaced by little miss sunshine over at ITV.

Any chance of writing the promo material for CHED? I already have my subscription to 16 and do a great imitation of Marie Osmond in heat.

Enrico Du Nevill
on 16 East

cheezkake

Hey, Enrico *baby*, - it takes a lot more than that to be a CHED DJ! Listen, pussycat - you gotta have soul, you gotta feel for those little housewives sitting at home with the Sara Lee Cheesecakes and the overdue payments for their husband's hot Camaros.

Above all, you gotta be totally ignorant about *everything* - I mean, sweetheart, you gotta think that the height of intellectual development is listening to The Dwarf talk about the Veal Cutlets at the Point After.

Know what I mean? Who loves ya, baby?

Chucky chucky chucky Dipstick
Behind the Console with all
Those Flashing Lights

dis chip rag?

You know, I've been reading all these letters in *Gateway* all through the year, and I've got this funny feeling that a lot of them are fakes.

I mean, who's gonna name their kid Alice Chalmers or Joe Mundane or other stupid things like that? Not only that, but most of those letters were really *really* dumb, and they didn't have any point. Some of them were even kinda ignorant, if you know what I mean.

All I can say is that the guy who writes them must be pretty bent, eh?

Peter Birnie
Sci. I



phone 433-2444

Farewell &
Have a good summer!

Garneau Theatre Building, 8728 - 109 Street T6G 1E9

432-4266

Student Help

Information
Confidential Help

Call or Drop In
Rm 250 SUB

ANNUAL GRADUATION SPECIAL

Approximate Half Price

GARNEAU STUDIO

LAST
WEEK!

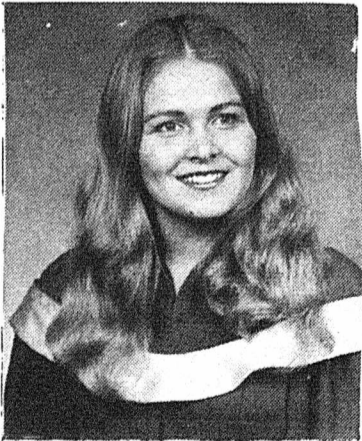
Offer expires April 15

ONE LOCATION ONLY
8619 - 109th Street
(across from Garneau School)

439-7284 433-3967

Garneau Studio

PHONE FOR APPOINTMENT



10245-102nd Street
429-3253

We're Small Enough
to Really CARE

Reasonable Rates
Offering Compact
to Full Size

"Convenient Downtown locations"

Calgary - ph 262-4400
Edmonton - ph 429-3253
Banff - ph 762-4114
Vancouver - ph 687-7283

Most Major Credit Cards Accepted

fridays

NOW OPEN
FOR SUNDAY
BRUNCH
11 AM - 2 PM
\$1.69

Try our Breakfast Special
- Bacon, 2 eggs, toast and coffee

1.59

Lunch & Dinner Specials Daily

1.49

Open: 7:30 - 6:30 till 11 for sandwiches & snacks
Beverages: 3:00 - 11:00 Mon - Thurs
3:00 - 12:00 Fri & Sat