

yard of striped cloth each fifty inches wide. Of one material, it needs four yards and seven-eighths twenty-two inches wide, or two yards and three-eighths forty-four inches wide, or two yards and an-eighth fifty inches wide. Price of pattern, 1s. 3d. or 30 cents.

LADIES' BASQUE.

(For Illustrations see Page 330.)

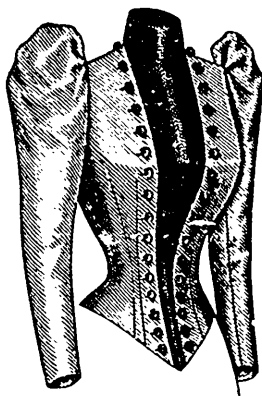
No. 4411.—This basque is shown made of black crape and cloth at figure No. 413 T in this magazine, knotted silk cord affording pretty decoration.

A stylish combination of fancy chevot and silk is here shown in the basque. The superb adjustment is accomplished by double bust darts, under-arm and side-back gores and a curving center seam, and the lower edge of the basque shapes a decided point at the center of the front and back. The fronts are arranged upon fronts of lining that close invisibly at the center; they open from the shoulders over a vest, the upper part of which is disposed in soft, becoming folds by gathers at the top and bottom; and the lower edge of this vest portion passes beneath the pointed upper edge of the lower vest-portion, which has the effect of a bodice and is also pointed at the lower edge. A lapel collar that is narrowed almost to points at the lower ends is joined to the front edges of the fronts and its edges are followed by a row of gimp. The upper portion of the fanciful sleeve is cut out in deep points at the top, and rising high above the points is a full puff of silk which is arranged upon the smooth, coat-shaped lining. The wrists are finished with fanciful cuffs, which are each reversed at the top to reveal an underfacing of silk; and the lower edges of the cuffs and the pointed upper edges of the sleeves are trimmed with gimp. At the neck is a standing collar, the upper part of which is reversed and decorated with gimp. Similar gimp trims the pointed upper edge of the lower vest-portion.

The style favors a union of two or three materials of different colors and textures; but, if preferred, a single fabric may be employed. Henrietta cloth, serge, camel's-hair, vicuna, challis and other woollens are adaptable to the mode, which is also appropriate for goods of silken texture. Braid, gimp, passementerie, ribbon, etc., may be applied for garniture, although a simple completion will suffice. A pretty development of the mode unites figured light challis and golden-brown India silk, with narrow golden-brown velvet ribbon for decoration. The collars, cuffs, upper vest-portion and the puffs on the sleeves may be of the silk.

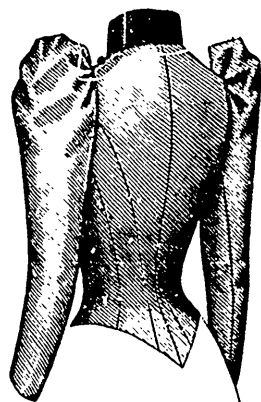
We have pattern No. 4411 in thirteen sizes for ladies

fifty inches wide, and a yard and three-eighths of plain silk twenty inches wide. Of one material, it needs four yards and seven-eighths twenty-two inches wide, or two yards and three-eighths forty-four inches wide, or two yards and an-eighth fifty inches wide. Price of pattern, 1s. 3d. or 30 cents.



4425

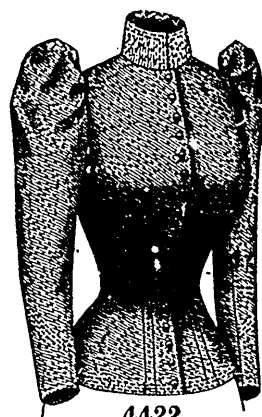
Front View.



4425

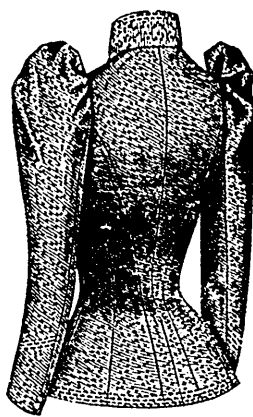
Back View.

LADIES' BASQUE, WITH EXCHANGEABLE VEST. (COPYRIGHT.)
(For Description see Page 332.)



4422

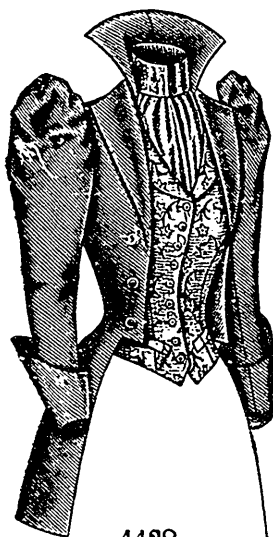
Front View.



4422

Back View.

LADIES' BASQUE. (COPYRIGHT.)
(For Description see Page 333.)



4428

Front View.



4428

Back View.

LADIES' BASQUE. (COPYRIGHT.)

(For Description see Page 332.)

inches wide, or two yards fifty inches wide. Price of pattern, 1s. 3d. or 30 cents.

LADIES' COAT-BASQUE.

(For Illustrations see Page 330.)

No. 4406.—This basque may be again seen by referring to figure No. 419 T in this magazine.

The basque is here pictured developed in a handsome combination of brocaded silk and plain Bengaline. The loose fronts are reversed at the top in lapels by a rolling collar which meets the lapels in notches. The lapels are faced with the Bengaline, which is also used to line the remainder of the fronts. The fronts flare to disclose a vest, which is adjusted by double bust darts and widened to close in double-breasted fashion with button-holes and buttons. The vest describes a point at the lower edge and is cut in low outline at the top and finished with a rolling collar; and above the vest is revealed a chemisette, which extends to the bust and is included in the right shoulder seam, being tacked flatly to position beneath the right side of the vest and fastened invisibly at the left side. The adjustment of the basque is completed by under-arm and side-back gores, and a curving center seam that terminates below the waist-line above stylish coat-laps; and extra fulness allowed at each side-back seam is underfolded in a forward-furling plait that is marked at the top by a button. The back is extended to form fashionably long, narrow coat-tails. The coat sleeves are sufficiently full at the top to stand prominently above the shoulders;

from twenty-eight to forty-six inches, bust measure. For a lady of medium size, the basque requires a yard and a-half of fancy chevot

entirely full at the top to stand prominently above the shoulders;