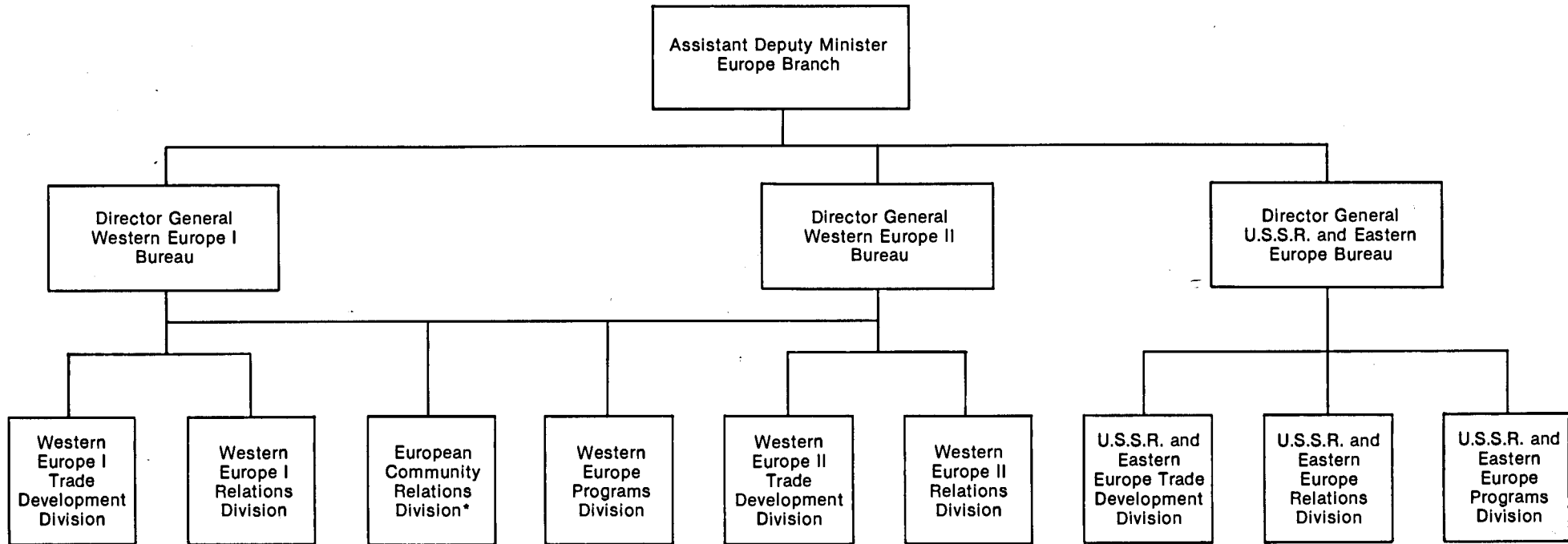


CHART 5: Europe Branch



France, F.R.G., Italy, Malta,
U.K., Vatican
EC - Multilateral and Institutional

Austria, Belgium, Cyprus, Denmark (and
Greenland), Finland, Greece, Iceland,
Ireland, Luxembourg, Netherlands,
Norway, Portugal, Spain, Sweden,
Switzerland, Turkey

Albania, Bulgaria, Czechoslovakia, G.D.R.,
Hungary, Mongolia, Poland, Romania, U.S.S.R.,
Yugoslavia

* European Community Relations Division's primary
relationship is to the Director General Western
Europe I.