

and with an interval of an hour and a half, continued till midnight when six games had to be adjourned.

We regret to learn that Dr. Zukertort's health is very poor. He broke down while in Dublin lately.

INTERNATIONAL POSTAL CARD TOURNEY.

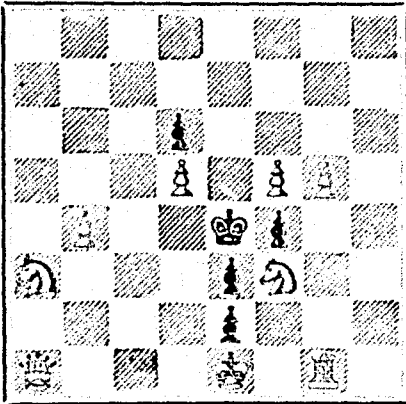
The Rev. C. E. Ranken has won another game, which makes the score Great Britain 17, United States 16, and 6 drawn.

A kind correspondent at Hamilton informs us that a match between the Hamilton and Toronto clubs took place over the board, at the latter city on Friday, the 13th inst., which resulted in a tie, each club scoring six games.

PROBLEM No. 221.

By Master W. A. Bohner, Hamilton, Victoria.

BLACK.



WHITE.

White to play and mate in two moves.

GAME 337th.

CHESS IN AUSTRALIA.

Played between Mr. H. Charlick, of Adelaide, and Mr. A. Holloway, of Williamstown.

WHITE.—(Mr. Charlick.) BLACK.—(Mr. Holloway.) (Evans' Gambit.)

- 1. P to K 4 1. P to K 4
2. Kt to K B 3 2. K to Q B 3
3. B to B 4 3. B to B 4
4. P to Q Kt 4 4. B takes K P
5. P to B 3 5. W to R 4
6. P to Q 4 6. P takes P
7. Castles 7. P to Q 6

P takes P is the move recommended by the German school as leading to the compromised defence.

- 8. B to R 3 8. P to Q 3
9. Q to Kt 3 9. Kt to B 3
10. P to K 5 10. B to Kt 3
11. P takes P 11. Castles
12. P takes P 12. Q takes P

A subtle move, menacing Kt to Q R 4

- 13. B takes Q P 13. B to K 3
14. Q to B 2 14. Kt to K 4
15. Kt takes Kt 15. Q takes Kt
16. Kt to Q 2

White prefers dislodging the Black forces to taking the R or P. For instance, B to B 2 or Kt to Kt 5 must be guarded against.

- 17. B takes P (ch) 16. K R to B
18. Kt to K 4 16. Kt to R
16. Kt to K 4 16. Kt to Kt 5

H K take B White forces mate by Kt to B 6 (dbl ch) and Q to R 7

- 19. B to Q 6

The position is quite picturesque.

- 20. P to K R 3 19. Q to K R 4
20. B takes P (ch)

Ingenuous, but unavailing.

- 21. Kt takes B 21. Kt to K 6
22. Q to Q B 22. Kt takes R
23. B to K 4 23. B to Q B 5
24. Q to K B 4 24. P to B 4
25. B to K B 3 25. Q to K
26. R to K 5 26. Kt to Q 7

Black is so intent on extricating his piece that he overlooks the threatened mate.

White mates in two moves

A neat problem for beginners. Time—One hour.

GAME 351th.

CHESS IN ENGLAND.

(From Laud and Water.)

Being one of twenty games played simultaneously by Mr. Blackburne against the same number of players, at Manchester, Eng.

(Scotch Gambit Declined.)

WHITE.—(Mr. J. H. Blackburne.) BLACK.—(Mr. G.)

- 1. P to K 4 1. P to K 4
2. Kt to K B 3 2. Kt to Q B 3
3. P to Q 4 3. P to B 4 (ch)
4. Kt takes P 4. Kt takes Kt
5. P takes Kt 5. P takes P
6. B to Q B 4 6. P to K Kt 3
7. Q to Q 7. Q to K 2
8. B to K R 5 8. Q to Kt 2
9. Castles 9. Kt to K 2
10. Q takes K P 10. P to Q 4
11. P takes P (en pas.) 11. P takes P
12. Kt to B 3 12. K to Q 2
13. Q R to Q sq 13. Kt to B 3
14. R takes P (ch) (b) 14. K takes R
15. R to Q sq (ch) 15. K to B 2
16. Kt to Q 5 (ch) 16. K to Q 2
17. Q to K 6 (ch) 17. K takes Q
18. Kt to K 3 (dbl. ch) 18. K to K 4
19. P to B 4 (ch) 19. K to K 5
20. R to Q 5 (ch) 20. K takes Kt
21. P to B 5 (dbl. ch) 21. K to K 7
22. B to B 3 and mate

NOTES.

(a) This variation is likely to lead to interesting results. Ticking tigers has a similar tendency.

(b) Here begins a glittering finale, similar to many others that have proceeded from Mr. Blackburne's lively imagination.

SOLUTIONS

Solution of Problem No. 119.

- WHITE. BLACK.
1. R to K Kt 3 1. B takes R
2. Q to Q R 3 2. Anything
3. Q or Kt mate

Solution of Problem for Young Players No. 217.

- WHITE. BLACK.
1. B to K Kt 7 (ch) 1. K takes B
2. Q takes B (ch) 2. K moves
3. Q mates

PROBLEMS FOR YOUNG PLAYERS, No. 218.

- WHITE. BLACK.
K at K 2 K at Q 4
Q at K Kt 5 B at K 4
B at Q 4 Pawn at K 3, and Q 3
Kt at K Kt 6
Pawn at K Kt 4 and Q 3

White to play and mate in two moves.



LOBSTER FISHERY.

DEPARTMENT OF MARINE & FISHERIES, FISHERIES BRANCH.

OTTAWA, 22nd March, 1879.

PUBLIC NOTICE is directed to the following Fishery Regulations adopted by the Governor-General in Council, on the 13th inst., respecting all Orders in Council relating to the Lobster Fishery:

1. In that part of the Province of Nova Scotia, comprising parts of the Counties of Cumberland and Colchester, on the Bay of Fundy, the Counties of Hants, Kings, Annapolis, Digby, Yarmouth, Shelburne, Queen's, Lunenburg, Halifax, Guysborough, Richmond, Cape Breton and Victoria, also in the Province of New Brunswick, comprising part of the County of Westmorland, on the Bay of Fundy, and the Counties of Albert, St. John and Charlotte; it shall be unlawful to fish for, catch, kill, buy, sell or (without lawful excuse) possess any Lobsters from the first day of August to the first day of April in each year.

2. In that part of the Province of Nova Scotia, comprising the Counties of Inverness, Antigonish, Pictou, and parts of Colchester and Cumberland, on Northumberland Strait, and that part of the Province of New Brunswick, comprising the Counties of Westmorland (in part), Kent, Northumberland, Gloucester and Restigouche, also in the Province of Quebec and Prince Edward Island; it shall be unlawful to fish for, catch, kill, buy, sell or (without lawful excuse) possess any Lobsters from the 23rd day of August to the 23rd day of April in each year.

3. It shall be unlawful at any time to fish for, catch, kill, buy, sell or possess any female Lobsters in spawn or with eggs attached, soft-shelled, or any young Lobsters of less size than nine inches in length measuring from head to tail exclusive of claws or feelers, and when caught by accident in nets or other fishing apparatus lawfully used for other fish, they shall be liberated alive at the risk and cost of the owner of the net or other apparatus, or by the occupier of the fishery, on either of whom shall devolve the proof of such actual liberation.

By order, W. F. WHITCHER, Commissioner of Fisheries.

British American BANK NOTE COMPANY, MONTREAL.

Incorporated by Letters Patent. Capital \$100,000.

General Engravers & Printers

Bank Notes, Bonds, Postage, Bill & Law Stamps, Revenue Stamps, Bills of Exchange, DRAFTS, DEPOSIT RECEIPTS, Promissory Notes, &c., &c., Executed in the Best Style of Steel Plate Engraving. Portraits a Specialty. G. B. BURLAND, President & Manager.

25 Fashionable Visiting Cards—two alike, with name. 10c. Nassau Card Co., Nassau, N.Y.

25 FANCY CARDS with Name 10c. Plain or Gold, Agents' outfit 10c. 150 Styles. Hall & Co., Hudson, N.Y.

60 Chromo and Perfumed Cards (no 3 alike). Name in Gold and Jet, 10 cents. CLINTS BROS., Clintonville, Ct.

The Scientific Canadian

MECHANICS' MAGAZINE,

AND

PATENT OFFICE RECORD,

A MONTHLY JOURNAL.

Devoted to the advancement and diffusion of Practical Science, and the Education of Mechanics.

THE ONLY SCIENTIFIC AND MECHANICAL PAPER PUBLISHED IN THE DOMINION.

PUBLISHED BY

THE BURLAND-DESBARATS LITH. CO.

OFFICES OF PUBLICATION:

5 and 7 Bleury Street, Montreal.

G. B. BURLAND, General Manager.

F. N. BOXER, ARCHITECT & CIVIL ENGINEER, Editor.

TERMS:

One copy, one year, including postage, \$2.00. One copy, six months, including postage, \$1.10. Subscriptions to be paid in ADVANCE.

The following are our advertising rates:—For one monthly insertion, 10 cts. per line; for three months, 25 cts. per line; for six months, 45 cts. per line; for one year, 75 cts. per line; one page of Illustration, including one column description, \$30; half-page of Illustration, including half column description, \$20; quarter-page of Illustration, including quarter column description, \$10. 10 per cent. off on cash payments.

INVENTIONS AND MACHINERY, &c., or other matter of an original, useful, and instructive character, and suitable for subject matter in the columns of the MAGAZINE, and not as an advertisement, will be illustrated at very reduced rates.

REMITTING MONEY.—All remittances of money should be in the form of postal orders. When these are not available, send money by registered letters, checks or drafts, payable to our order. We can only undertake to become responsible for money when sent in either of the above ways.

This journal is the only Scientific and Mechanical Monthly published in Canada, and its value as an advertising medium for all matter connected with our Manufactories, Foundries, and Machine Shops, and particularly to Inventors, is therefore apparent.

JUST PUBLISHED

CHISHOLM'S ALL-ROUND ROUTE AND PANORAMIC GUIDE OF THE ST. LAWRENCE.

With corrections to date. It contains full descriptions of the points of interest on the "All-Round Route," including Hudson River, Trenton and Niagara Falls, Toronto, Ottawa, Montreal, Quebec, Saguenay River, White Mountains, Portland, Boston, New York. It is profusely illustrated, and is furnished with maps of the route, and a fine panoramic view of the St. Lawrence River. For sale by booksellers and news agents. Sent post-paid to any address on receipt of the price, 50 cts.

C. R. CHISHOLM & BROS.,

179 Bonaventure street, Montreal.

IMPORTANT NOTICE.

Burland-Desbarats Lithographic Co., 5 & 7 BLEURY ST.,

Begs to inform the BANKERS, MERCHANTS and BUSINESS MEN of the Dominion, that their large establishment is now in full operation, and that they are prepared to do all kinds of

ENGRAVING, ELECTROTYPING, STEREOTYPING, LITHOGRAPHING and TYPE PRINTING,

Photo-Electrotyping & Wood Engraving

IN THE BEST STYLE, AND AT LOW PRICES.

Special attention given to the reproduction by

Photo-Lithography

OF

MAPS, PLANS, PICTURES OR BOOKS

OF ANY KIND.

From the facilities at their command, and the completeness of their establishment, the Company feel confident of giving satisfaction to all who entrust them with their orders.

G. B. BURLAND, Manager.

THE COOK'S FRIEND BAKING POWDER

Has become a HOUSEHOLD WORD in the land, and is HOUSEHOLD NECESSITY

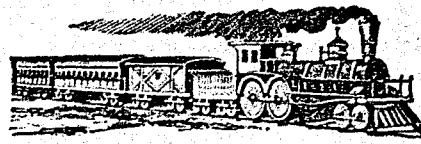
in every family where Economy and Health are studied. It is used for raising all kinds of Bread, Rolls, Pancakes, Griddle Cakes, &c., &c., and a small quantity used in Pie Crust, Puddings, or other Pastry, will save half the usual shortening, and make the food more digestible.

THE COOK'S FRIEND

SAVETIME, IT SAVES TEMPER, IT SAVES MONEY.

For sale by storekeepers throughout the Dominion, and wholesale by the manufacturer.

W. D. MCLAREN, UNION MILLS, 17-19-59-362 55 College Street.



Q. M. O. & O. RAILWAY, Eastern Division.

COMMENCING TUESDAY, FEBRUARY 11th. Trains will be run on this Division as follows:— Leave Hochelaga. Arrive in Quebec. EXPRESS..... 3.00 p.m. 10.10 p.m. MIXED..... 7.19 a.m. 5.50 p.m.

RETURNING. Leave Quebec. Arrive in Montreal. EXPRESS..... 12.45 p.m. 7.30 p.m. MIXED..... 6.15 p.m. 10.10 a.m.

Trains leave Mile End Station ten minutes later. Tickets for sale at offices of Starnes, Love & Alden, Agents, 202 St. James Street, and 15th Notre Dame Street, and at Hochelaga and Mile-End Stations.

J. T. PRINCE, Gen'l. Pass. Agent. Feby. 17th. 1879.

\$10 to \$1000 invested in Wall St. Stocks makes fortunes every month. Book sent free explaining everything. Address BAXTER & CO., Bankers, 17 Wall St. N. Y.



NOTICE TO CONTRACTORS.

SEALED TENDERS, addressed to the undersigned will be received at this office until

SATURDAY, THE 19TH APRIL NEXT,

inclusively, for the construction and fitting up of a heating apparatus at the Departmental Buildings, in course of construction, at Quebec.

The plans and specification of the work may be seen at this office, every day after the 16th instant, between the hours of 10 a.m. and 4 p.m.

The Tenders must be endorsed "Tender for a Heating Apparatus"

The Department will not be bound to accept the lowest or any of the Tenders.

(By order) ERNEST GAGNON, Secretary

Department of Agriculture and Public Works, Quebec, 14th March, 1879.

N.B.—No reproduction unless by special written order.

AGENTS, READ THIS.

We will pay Agents a salary of \$2.00 per month and expenses, or allow a large commission to sell our new and wonderful inventions. We mean what we say. Sample free. Address:

SHERMAN & CO., Marshall, Mich.

TO LET.

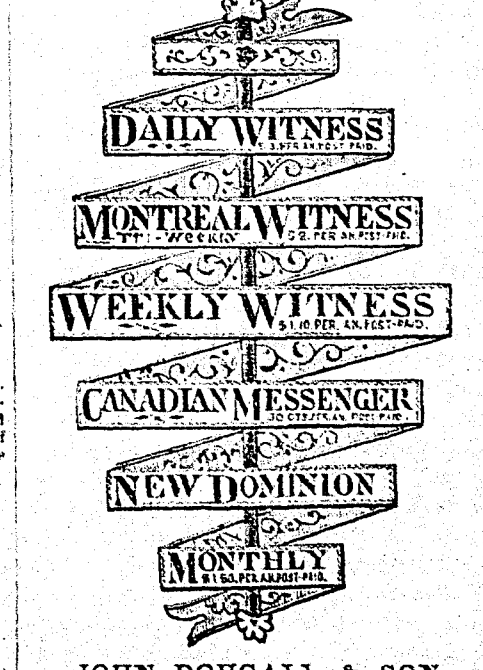
In those central premises forming the corner of Bleury and Craig Streets, and in the adjacent house on Craig Street—

OFFICES, double and single.

FLATS, admirably adapted for light manufacturing business, with or without steam power. Rent moderate.

Apply to G. B. BURLAND, No. 7 Bleury Street.

CHEAPEST AND BEST.



JOHN DOUGALI & SON, 218 and 220, St. James Street, Montreal. Electrotyping and Job Printing, Chromatic and plain.