

OUR CHESS COLUMN.

Solutions to Problems sent in by Correspondents will be duly acknowledged.

TO CORRESPONDENTS.

J. W. S., Montreal.—Letter received. Thanks. Also, solution of Problem No. 178. Correct. Student, Montreal.—Correct solution of Problem No. 179 received. M. J. M., Quebec.—Games received. Many thanks. They shall have early notice. Also, received correct solution of Problem No. 178. W. A., Montreal.—Problems received. Many thanks. E. H., Montreal.—Solution of Problem for Young Players No. 176 received. Correct.

CANADIAN CHESS CORRESPONDENCE TOURNEY.

The following is a list of the games concluded up to June 11th, 1878.

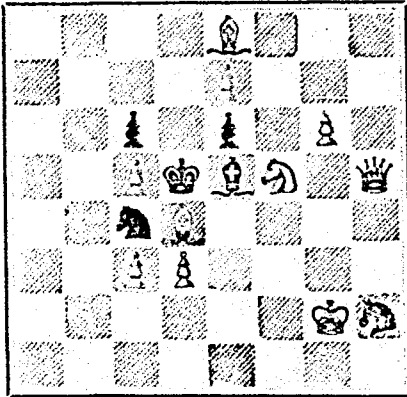
Table with columns for White and Black players and their opponents. Includes names like Henderson vs. Boyvin, Shaw vs. Clawson, etc.

Mr. Blackburne has been lately exhibiting his wonderful powers as a Chess-player at Leigh, in Lancashire, Eng. He commenced by playing simultaneously against all comers. Beginning with twenty, and taking others as they came on, he finally got through about thirty games. Of these he drew two and won the remainder. This took place on the first day. On the second he played blindfold against eight of the strongest players of the district, defeating all but one, who effected a draw.

Mr. Samuel Loyd, in a late number of the Scientific American Supplement, of which he is the Chess editor, astounds the public with the bold proposition that he will solve any two problems in the time that it requires another party to solve one. He wishes to have a few friendly matches, but does not prefer to have any stake at issue. Who will dare to accept his challenge?—clubs transatlantic Supplement, St. Louis, U.S.

PROBLEM No. 176.

BY W. ATKINSON, Montreal.



BLACK.

White to play and mate in two moves.

GAME 267th.

(From the Chess Player's Chronicle.)

Played at the Devon, London, England, in 1877, between Dr. Zukertort and Mr. S., the former giving the odds of Q-Kt.

(Remove White's Q-Kt.)

Chess game notation for Game 267th, listing moves for White and Black players.

NOTES BY PROFESSOR WAYTE.

(a) An compromising development... B-B to B4 may be played safely, apart from the odds; for if then 4-B takes P, ch, 4-K takes B, 5-Q to B4, 5-P to Q4, 6-Q takes B, 6-Kt takes P with good central Pawns. But the best move is 3-Kt to B3, compelling 4-P to Q-B3, and then 4-B to B4.

(b) This mode of attack may be expected as a matter of course in a game at odds, when the opponent has castled on the Q side; Black, however, defends himself with soundness and solidity for some time longer.

(c) B to Q 5 at this point would have turned the tables completely; e.g., 26-B to Q 5, 27-B to R 6, ch, 27-K to Q 2, 28-R to Kt 7, ch, 28-K to K sq, now if 29-B1, Kt 5, the reply is not 29-Q takes Q, but 29-B takes B, and the attack is exhausted. This was of course foreseen by Dr. Zukertort when he sacrificed the exchange, but such risks must be run if the odds of a piece are to be given at all.

(d) Pretty and conclusive. Black has no better reply than that he makes, for if 30-Q takes Q, he is mated in two moves; and if 30-R to Q R sq, 31-R to K 7, ch, wins easily.

GAME 267th.

Played at Sheffield, Eng., some time ago, between the Rev. S. W. Earnshaw and an Amateur. (Vienna Opening.)

Chess game notation for Game 267th, listing moves for White and Black players.

NOTES.

(a) This move involves the subsequent wanderings of His Majesty, although it has proved successful on certain occasions, must be bad, as it violates the first principles of the game.

(b) A novel and ingenious course. The King generally seeks shelter, or rather enters the battle on the Queen's side.

(c) This weak move costs Black the game.

(d) The Adversary must now lose his Queen or be mated.

SOLUTIONS.

Solution of Problem No. 178.

Solution for Problem No. 178, listing moves for White and Black.

Solution of Problem for Young Players No. 176.

Solution for Problem for Young Players No. 176, listing moves for White and Black.

PROBLEMS FOR YOUNG PLAYERS, No. 177.

Problems for Young Players No. 177, listing moves for White and Black.

VALUABLE LITHOGRAPHIC STONE QUARY, MILL AND MACHINERY, IN THE VILLAGE OF MARMORA, COUNTY OF HASTINGS, FOR SALE BY PUBLIC AUCTION.

Under the provisions of the Joint Stock Companies Winding-up Act, will be offered for sale the property of the

ONTARIO LITHOGRAPHIC STONE COMPANY, (unless previously disposed of by private contract) at the Court House in the

CITY OF BELLEVILLE, ON Saturday, the 6th day of July next, at noon.

LOT I.

All that valuable Lithographic Stone Quarry situate in the village of Marmora, in the County of Hastings, with the Mill, Steam Engine, Boiler (25 horse power), three gangs of saws with 16 sets of irons each, trucks, wheels, belting and gearing complete, together with the derrick, with iron and steel-wire rope for raising blocks of stone complete; situate and being on part of Lot NUMBER SIX, in the 4th concession of MARMORA, and part of Park Lot No. 15, Catherine Street Marmora Village.

LOT II.

Lot No. 2, in the 6th concession Marmora, containing 180 acres, on which there is some valuable CEDAR, and a field of LITHOGRAPHIC STONE, with some good farming land.

There will be a reserved bid for each of the above properties.

TERMS OF SALE.—Ten per cent. deposit at time of sale, 40 per cent. one month thereafter, and balance on receiving a good title.

The Mill and property can be inspected on application to Wellington McWilliams, tavern-keeper, Marmora.

For further particulars and conditions, apply to

BENJ. WALKER, Liquidator of the Ontario Lithographic Stone Company, Post Office Block, Belleville.

CHAS. WILKINS, Auctioneer, 17-26-2371

25 Fashionable Visiting Cards, no two alike, with name, 10c. Nassau Card Co., Nassau, N. Y.

JUST PUBLISHED

GHISHOLM'S ALL-ROUND ROUTE AND PANORAMIC GUIDE OF THE ST. LAWRENCE,

With corrections to date. It contains full descriptions of the points of interest on the "All Round Route," including Hudson River, Trenton and Niagara Falls, Toronto, Ottawa, Montreal, Quebec, Saguenay River, White Mountains, Portland, Boston, New York. It is profusely illustrated, and is furnished with maps of the Route, and a fine panoramic view of the St. Lawrence River. For sale by booksellers and news agents. Sent post-paid to any address on receipt of the price, 50 cts.

C. R. GHISHOLM & BROS., 17-26-2371 379 Bonaventure street, Montreal.

HUMOROUS.

AN honest failure is the rarest work of man.

THE phonograph speaks all languages fluently.

HEB's a health to poverty. It sticks to us when all our friends desert us.

WHY don't Miss Kellogg marry an editor and be done with it? She wants a poor man.

OSE swallow cannot make a summer; but all swallows are working now, and summer is here.

THE coming inventor will construct a machine that will abolish sound. There is too much noise in the world.

AN eminent writer remarks that man is distinguished from the brute creation by his superior capacity for blundering.

IT is not yet definitely settled as to how much a man can allow his creditors on the dollar and still be considered honest.

A COLUMBUS man says he started some thirty years ago to make \$1,400,000. He has got the fourteen, but the ciphers bother him.

THE wolf, says a Russian proverb, changes its hair every year. The young lady of the period does better; she changes hers every afternoon.

THAT man is not a friend to his race who builds a house in which one back door must be used by the women of separate families.

THIS now the poverty-stricken young man discovers that his white stove-pipe hat of last summer cannot be cleaned, so he idly puts a mourning band round it.

"WITHIN five minutes after the alarm was given our reporter was on the ground."—We have little doubt if he gave the slightest provocation to the preman of the Engine Company.

A SMALL boy of the freckled species, in the parlour where a dry goods clerk is spaking the boy's big sister, will make the course of true love rougher than riding in a lumber wagon.

MORSON & SON'S PREPARATIONS OF PEPSINE FOR INDIGESTION. Highly recommended by the Medical Profession.

PEPSINE POWDER, in 1 oz. Bottles, 4s. per oz. PEPSINE WINE, at 2s. 5s., and 9s. per Bottle. PEPSINE LOZENGES, at 2s. 6d. and 4s. 6d. per Bottle. PEPSINE GLOBULES, at 2s. 3s. 6d., and 6s. 6d. per Bottle. SOLD BY ALL CHEMISTS AND THE MANUFACTURERS, T. MORSON & SON, 17-5 12-36 5w. SOUTHAMPTON ROW, RUSSELL SQUARE, LONDON.

In consequence of spurious imitations of LEA AND PERRINS' SAUCE, which are calculated to deceive the Public, Lea and Perrins have adopted A NEW LABEL, bearing their Signature, thus,



which is placed on every bottle of WORCESTERSHIRE SAUCE, and without which none is genuine. Ask for LEA & PERRINS' Sauce, and see Name on Wrapper, Label, Bottle and Stopper. Wholesale and for Export by the Proprietors, Worcester; Cross and Blackwell, London, &c., &c.; and by Grocers and Oilmen throughout the World.

To be obtained of MESSRS. J. M. DOUGLASS & CO., MONTREAL; MESSRS. FERQUIHART & CO., MONTREAL.

NOTICE TO THE PUBLIC!

The Engraving, Die Sinking, Lithographing, Printing and Publishing Business

heretofore carried on at No. 115 St. Francis Xavier Street, by the late firm of BURLAND, LAUREN & CO. and a 319 St. Antoine Street, by GEO. E. DESBARATS, being merged into the

BURLAND-DESBARATS LITHOGRAPHIC COMPANY,

has been REMOVED to those substantial, commodious and spacious premises, erected for the Company at 3, 5, 7, 9 & 11 BLEURY STREET, NEAR CRAIG, MONTREAL.

The double facilities acquired by the fusion of the two firms, the conveniences provided by the removal, and the economy and efficiency introduced by the united management, enable THE BURLAND-DESBARATS LITHOGRAPHIC COMPANY to execute orders for every kind of

ENGRAVING, LITHOGRAPHING, TYPE PRINTING & ELECTROTYPING.

AT SHORT NOTICE, IN THE BEST STYLE AND AT LOWEST PRICES.

Our friends and the public are invited to have their orders for every description of ENGRAVING, LITHOGRAPHING, TYPE PRINTING, ELECTROTYPING, PLAIN, GOLD & COLOUR PRINTING, STEREOTYPING, &c., &c.

At the Office, Bleury Street.

PHOTO-LITHOGRAPHY A SPECIALITY.

To this branch the attention of ENGINEERS, SURVEYORS, ARCHITECTS, &c., is particularly requested, the Company being prepared to reproduce MAPS, PLANS, and DRAWINGS in an incredibly short space of time and at a trifling cost.

ENGRAVINGS, BOOKS, ILLUSTRATIONS, &c., &c., reproduced same size or reduced to any scale. ILLUSTRATED CATALOGUES for manufacturers done by this process at very cheap rates.

REMEMBER THE ADDRESS:

THE BURLAND-DESBARATS LITHOGRAPHIC COMPANY, 5 and 7 BLEURY STREET, MONTREAL.