

A. C. NEFF, JAMES WOOD,
Chartered Accountant, Late Sec. The C. Eaton Co., Ltd.
NEFF & WOOD
PUBLIC ACCOUNTANTS, AUDITORS
ASSIGNEES, ETC.
Room 500 McKinnon Bldg., Toronto

The Public Knows It

It knows that every young man and woman should have a proper preparation for life's duties from a business standpoint. It seems to know also that the

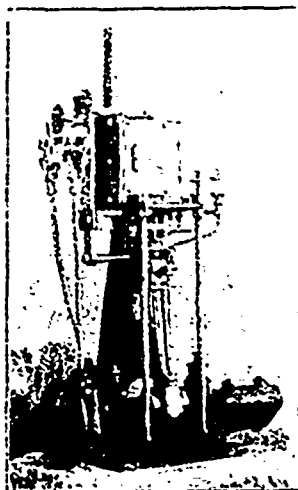
Central Business College OF TORONTO,

is about the most reliable place in which young people can enjoy a thorough training in all commercial branches, including **Shorthand, Typewriting and Telegraphy**. This is suggested by the largely increased attendance of students from all parts of the country at the present time.

New members admitted each week. Particulars cheerfully given.

Address, **W. H. SHAW, Prin.,**
Yonge and Gerrard Sts.,
Toronto.

ALBERT BELL DUNNVILLE, ONT.



Maker of

YACHT ENGINES, 1 H.P. to 50 H.P.
Safety Water Tube BOILERS
PROPELLER WHEELS
Stationary Engines and Boilers

WRITE FOR CIRCULARS

Kemp Mfg. Co.
TORONTO.

Galvanized Steel Pails

FOR FIRE PURPOSES ONLY.
NO HOOPS TO FALL OFF.

PRICES ON APPLICATION.

Another Montreal industry wants to move to Cornwall. At a special meeting of the town council recently Mr. Major, of the firm of Major Bros. & Co., manufacturers of tar-felt, strawboard, etc., was present, and stated that this firm would like to move to some place where they could better expand their business. If sufficient inducements were held out they might come to Cornwall and build a mill for the making of their wares from the raw material. This mill would employ forty or fifty hands. They would like a site of ten acres of ground. A bonus and water power were also mentioned. A committee was appointed to confer with Mr. Major as to site, terms, etc. - Kingston News.

The plant of the Rivington Cutlery Company, Montreal, was slightly damaged by fire a few days ago.

The Royal Electric Company are shipping the Hamilton, Ont., Electric Light and Power Company, one of their single phase 2,000 light alternators with station apparatus, etc. This became necessary owing to the large increase in incandescent lighting, and speaks well for the new manager.

The Kettle River Dressed Beef and Provision Company, Greenwood, B.C., has been incorporated with a capital stock of \$50,000.

The Packard Electric Company, St. Catharines, Ont., have put in an improved sand blast frosting machine which will enable them to produce frosted lamps of any style or pattern desired.

The Goldie & McCulloch Company, Galt, Ont., recently shipped a large boiler to the Ontario Rolling Mills, Hamilton, Ont.

Cloward & Gibbons' laundry, at Nelson, B.C., was destroyed a few days ago. Loss about \$2,500.

The Manufacturers' and Merchants' Cycle Company of Toronto, has been incorporated with a capital stock of \$24,000, to manufacture bicycles.

The marble industry promises to be an important one in Cape Breton. Over fifty vessels have loaded marble or lime at Marble Mountain during the last four months. The company operating at this place are doing a large and increasing business, and has made it a permanent success. Besides giving employment to a large number of laborers, the company purchases material to make thousands of barrels annually from the farmers. - Maritime Merchant.

The sash, door and blind factory at St. Cunegonde, Que., occupied by H. Fauteux, was destroyed by fire a few days ago. Loss about \$25,000.

The Victoria Wheel Works, Galt, Ont., are now lighted by electricity, a new plant consisting of twenty incandescent lamps and ten arc lamps having recently been installed for the purpose.

Walter Frederick Taylor, Norman William Telfer and Lorenzo Henry Telfer have commenced business as dealers in electrical supplies, etc., in Montreal, under the style of Taylor, Telfer & Co.

(From "Free Press," London, Ont., December 9th, 1896.)

"Number two Committee of the Board of Education met last night. It was decided to put in two No. 25 Heeson Fire Grates in the Collegiate Institute furnaces. One of these Grates is said to have saved four tons of coal at Princess Ave. School last winter."

These Grates, 16 x 26 inches, are supplied by

The HEESON ROCKING GRATE BAR CO. OF TORONTO (Limited),
Phone 1924. 120 VICTORIA STREET.

Twelve additional sets of these bars have since been put in for the London Board of Education.

ALEX. GARTSHORE, President. J. G. ALLAN, Sec.-Treas. JAS. THOMPSON, Vice-Pres and Gen. Mgr.

THE GARTSHORE-THOMPSON PIPE & FOUNDRY CO.
Limited



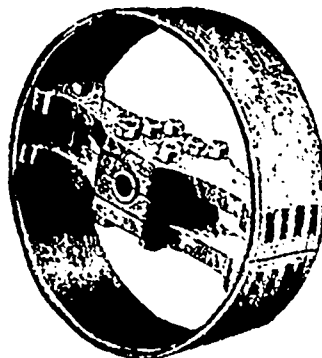
3 in. to 60 in. diameter.

For Water, Gas, Culverts and Sewers

Special Castings and all kinds of
WATER WORKS SUPPLIES

FLEXIBLE AND FLANGE PIPE.

HAMILTON, ONT.



BENT WOOD SPLIT PULLEYS.
RIM... (REID'S PATENT).

The Strongest, Lightest and Best Belt Surface in the World

No Glue, no Nails in Rim like Segment Rim Pulleys, to be affected by Steam, Dampness or Moist Temperature.

EVERY PULLEY GUARANTEED.

The Reid Bros. Manufacturing Co., of Toronto.
102-108 Adelaide St., West, Toronto.