

FOR.....

RAILWAY AND CONTRACTORS' SUPPLIES

..SEND TO..

G. & J. BROWN MFG. CO.

(LTD.)

BELLEVILLE, - ONT.

BRIDGE BUILDERS, ENGINEERS,
BOILER MAKERS, MACHIN-
ISTS AND FOUNDRYMEN.

...Manufacturers of...

Frogs, Diamond Crossings, Switches, Hand
Cars, Lorries, Velocipede Cars, Jim Crows,
Track Drills, Semaphores, Rail Cars,
Double and Single Drum
Hoists, Etc.

NOTICE.

Manufacturers and Capitalists: Patent Acts of
1872, and Amendments, Section 23.

NOTICE is hereby given to all persons desir-
ous of practising the invention in the
manufacture of Aluminum and Alloys thereof,
for which certain letters patent of the Domin-
ion of Canada were granted on June 7th, 1889,
to Chas. Martin Hall, assignor to the Pittsburg Re-
duction Co., to wit, Nos. 31,512, 31,513, 31,514,
31,515, 31,516, 31,517; and also the invention in
aluminum alloys and manufacture thereof, for
which certain letters patent of the Dominion
of Canada were granted on July 20th, 1892, to
John W. Langley, assignor to the Pittsburg Re-
duction Company, to wit, No. 39,102, that the
undersigned is prepared to grant licenses upon
reasonable terms under each and all of same
letters patent, and otherwise place the patent
inventions in possession of the public in accord-
ance with the provisions of the above recited
act.

Communications to the undersigned may be
addressed to 701 Ferguson Building, Pittsburg,
Pa., U.S.A.

(Signed), The Pittsburg Reduction Co.

ASSIGNEE.

JAS. W. PYKE

35 St. François Xavier St.

MONTREAL

Sole Canadian
Representative of .. **FRIED KRUPP**

Essen and Magdeburg, Germany.

Locomotive Tires

Axles, Crank-Pins

CAST STEEL DRIVING
WHEEL CENTRES,
STEEL-TIRED WHEELS,

Steel Forgings

UP TO SEVENTY TONS

Exhaust Steam UTILIZATION TO EFFET Economy

OR INCREASE OF POWER—AND HOW?

Before Buying any type of Feed-Water Heater
and Purifier, or Separator for
Steam and Oil,

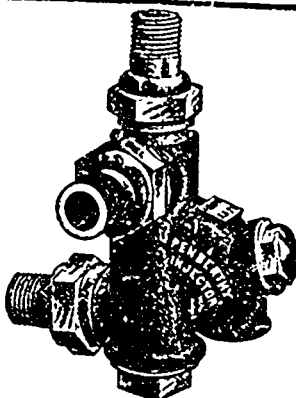
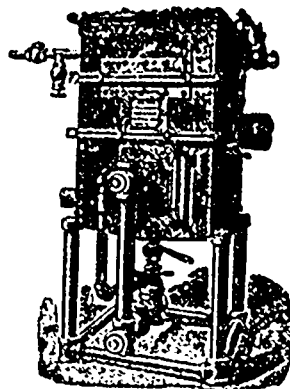
Consider the efficiency, simplicity, construction and
prices, of those we manufacture.
Tests and complete information forwarded by
request upon the
Webster "Vacuum" Feed-Water Heater and Puri-
fier, and
Separators for live and exhaust steam.

Guarantees and efficiency fully established by suit-
able trial, and hundreds in use through-
out the United States and Canada.

Also the **WEBSTER System of Steam Heating**,
without back pressure on engines—guaranteed. Can be at-
tached to existing plants with great economy.

MANUFACTURED BY

DARLING BROTHERS, 112 Queen St., Montreal



The World-Renowned

PENBERTHY

Automatic Injector

90,000 IN USE IN THE UNITED STATES 25,000 IN USE IN CANADA

What Better Recommendation Do You Want?

Penberthy Injector Co.

WINDSOR, CANADA.

EAGLE FOUNDRY

Established
..1820..

GEORGE BRUSH

14 TO 34 KING AND QUEEN STREETS. - - MONTREAL

Maker of

STEAM ENGINES, STEAM BOILERS, HOISTING ENGINES, STEAM PUMPS

Circular Saw Mills, Bark Mills, Shingle Mills, Ore Crushers, Mill Gearing,
Shafting Hangers and Pulleys.

SAFETY ELEVATORS AND HOISTS FOR WAREHOUSES, ETC.

HEINE SAFETY STEAM BOILERS.

BLAKE "CHALLENGE" STONE BREAKER

The Attention

OF WOOLEN MANUFACTURERS IS CALLED TO

THE TORRANCE PATENT SELF-ACTING BALLING MACHINE

and positive Creel feed for Wool cards. The latest, best and only feed on the mar-
ket that will make yarn positively even. These machines are built by The Tor-
rance Mfg. Co., Harrison, (East Newark), N.J., U.S.A., for the States, and by
The St. Hyacinthe Mfg. Co., St. Hyacinthe, Que., Canada for the Canadian market.

DRUMMOND-McCALL PIPE FOUNDRY CO. (Ltd.)

Manufacturers of



"Specials," Hydrants, Valves, Etc.

OFFICES:

New York
Life

Building, .

Montreal

WORKS:

Lachine,

Quebec..