

WANT COLUMN.

One cent per word each insertion. Minimum 25 cents. Cash with order. Card of Thanks 50c.

LOST

LOST—Pair of rimless glasses with chain fastened to button. Finder please leave at Guide-Advocate Office. Reward.

WANTED

REPAIR WORK WANTED—I am now prepared to do upholstering and light furniture repairs. Terms: cash. J. Tomlin, Watford and Simcoe streets. 1 April 11

TO RENT

I CAN TAKE A FEW COWS IN for pasture for the season.—George Bodaly. m11-2t

WANT TO SELL OR RENT—A frame building suitable for a stable or garage. Apply to D. Watt. m18-2t

TO RENT—About two hundred acres of pasture land adjoining Warwick Village.—Apply to George Fenner, Warwick P. O. m11-2t

FOR SALE

FOR SALE—Any quantity of milk. 8 cents a quart. G. Bodaly, Front street, Watford.

A QUANTITY OF DOOLEY SEED Potatoes for sale.—W. H. Luckham, R. R. 4, Forest

GOOD ORGAN FOR SALE.—Apply to Charles Mansfield, Front street, Watford. m11-2t

CREAM FOR SALE. Pint and half-pint bottles, delivered off the ice.—W. G. Connolly, phone 86.

YORKSHIRE SOW FOR SALE, due to brood this week.—Apply James Jones, phone 75-1-1, Watford.

DUCK EGGS FOR HATCHING—50 cents per setting. Tomato and cabbage plants for sale. E. A. Edwards, R.R. No. 4, Watford.

TENDERS will be received by W. E. Parker up till May 12, 1923, for suitable gravel for use on Township roads on Second and Fourth concessions east. S.E.R. m11-2t

IF YOU WANT TO BUY a dwelling in Watford at a bargain call and see W. E. Fitzgerald, barrister, Watford, who has several such properties for sale. A stable also to rent.

CHOICE SEED CORN FOR SALE Golden Glow \$1.40 per bus., shelled; Bailey \$1.50 bus., shelled; Can deliver phone orders to R. Whitton's store, Alvinston. Phone Alvinston 44-14. E. F. Augustine, R. 2, Bothwell. m11-2t

FOR SALE—Eggs for hatching from flock of Bred-to-Lay Barred Rocks. Settings or incubator lots, five cents per dozen above market price.—Ivan M. Parker, R. R. 8, Watford. a27-4t

BRICK HOUSE FOR SALE, on John st., Watford, reasonably priced. Electric fixtures, good well, cistern, fruit trees and garden lot. Immediate possession.—Mrs. Jessie Aylesworth, John street. tf

A good heavy overall \$1.50, and better lines at \$1.90.—Swift's.

CUSTOM HATCHING

Egg supply from my breeders being insufficient for my incubator capacity of over 1800 eggs, some space will be available at 4 cents per egg. Hatches every six days. Careful attention given. E. W. Brown, phone 60-5, Watford.

MAY OFFERINGS

S.C. WHITE LEGHORN Hatching Eggs. Ferris Strain. Breeding Pen severely culled. None but high producers tolerated. \$1.50 for 15 eggs, \$8.00 for 50 eggs, \$5.00 for 100 eggs. Book orders for May NOW. John C. Vidt, Arkona, Ont.

WATFORD COURT OF REVISION

The court of revision for the village of Watford will be held in the Council chamber on Thursday, May 31st at 11 o'clock a.m. to hear and decide any complaints against the assessment of the Village. Interested parties please take notice.

W. S. FULLER, Clerk. m11-3t

WARWICK COURT OF REVISION

The court of revision for the township of Warwick will be held in the Town Hall, Warwick, on Monday, May 21st, 1923, at 10 o'clock a.m., to hear and decide any complaints against the assessment of the township. Interested parties please take notice.

N. HERBERT, Clerk.

TUESDAY, MAY 29th,

Keep this date in mind and attend the

DEMONSTRATION OF**McCLARY OIL STOVES**

at

W. L. McCRAE & CO.

Watford, Ont.

Benstead, Florist

FRONT STREET, STRATHROY

FLOWERS FOR ALL OCCASIONS

Day Phone 254 Night Phone 74

CHEESE.....23c lb.

BLACK TEA.....60c lb.

DATES.....3 lb. for 25c

CORN AND PEAS.....2 for 25c

SOAPS.....14 for \$1.00

LUX.....2 for 21c

SODAS.....15c per lb.

KELLOGG FLAKES.....3 for 29c

SHREDDED WHEAT.....2 for 25

OATMEAL.....10 lb. for 39c

RAISINS.....15c per lb.

BEST RICE.....3 lbs for 25c

FLOUR.....\$3.50 per cwt.

Why pay more for your groceries.

Invest your time profitably by driving

to DOMINION STORES, LTD

Elon Hill, Mgr. Strathroy, Ont.

Elon Hill, Mgr. Strathroy, Ont.

Elon Hill, Mgr. Strathroy, Ont.

Elon Hill, Mgr. Strathroy, Ont.

Elon Hill, Mgr. Strathroy, Ont.

Elon Hill, Mgr. Strathroy, Ont.

Elon Hill, Mgr. Strathroy, Ont.

Elon Hill, Mgr. Strathroy, Ont.

Elon Hill, Mgr. Strathroy, Ont.

Elon Hill, Mgr. Strathroy, Ont.

Elon Hill, Mgr. Strathroy, Ont.

Elon Hill, Mgr. Strathroy, Ont.

Elon Hill, Mgr. Strathroy, Ont.

Elon Hill, Mgr. Strathroy, Ont.

Elon Hill, Mgr. Strathroy, Ont.

Elon Hill, Mgr. Strathroy, Ont.

Elon Hill, Mgr. Strathroy, Ont.

Elon Hill, Mgr. Strathroy, Ont.

Elon Hill, Mgr. Strathroy, Ont.

Elon Hill, Mgr. Strathroy, Ont.

Elon Hill, Mgr. Strathroy, Ont.

Elon Hill, Mgr. Strathroy, Ont.

Elon Hill, Mgr. Strathroy, Ont.

Elon Hill, Mgr. Strathroy, Ont.

Elon Hill, Mgr. Strathroy, Ont.

Elon Hill, Mgr. Strathroy, Ont.

Elon Hill, Mgr. Strathroy, Ont.

Elon Hill, Mgr. Strathroy, Ont.

Elon Hill, Mgr. Strathroy, Ont.

Elon Hill, Mgr. Strathroy, Ont.

Elon Hill, Mgr. Strathroy, Ont.

Elon Hill, Mgr. Strathroy, Ont.

Elon Hill, Mgr. Strathroy, Ont.

Elon Hill, Mgr. Strathroy, Ont.

Elon Hill, Mgr. Strathroy, Ont.

Elon Hill, Mgr. Strathroy, Ont.

Elon Hill, Mgr. Strathroy, Ont.

Elon Hill, Mgr. Strathroy, Ont.

Elon Hill, Mgr. Strathroy, Ont.

Elon Hill, Mgr. Strathroy, Ont.

Elon Hill, Mgr. Strathroy, Ont.

Elon Hill, Mgr. Strathroy, Ont.

Elon Hill, Mgr. Strathroy, Ont.

Elon Hill, Mgr. Strathroy, Ont.

Elon Hill, Mgr. Strathroy, Ont.

Elon Hill, Mgr. Strathroy, Ont.

Elon Hill, Mgr. Strathroy, Ont.

Elon Hill, Mgr. Strathroy, Ont.

Elon Hill, Mgr. Strathroy, Ont.

Elon Hill, Mgr. Strathroy, Ont.

Elon Hill, Mgr. Strathroy, Ont.

Elon Hill, Mgr. Strathroy, Ont.

Elon Hill, Mgr. Strathroy, Ont.

Elon Hill, Mgr. Strathroy, Ont.

Elon Hill, Mgr. Strathroy, Ont.

24th MAY TOGGERY

Coats, Dresses, Hosiery, Gloves

SILK SWEATERS

FROM MONARCH KNITTING CO.

Colors

Black, Gold, White, Blue & Marigold

BEAUTIFUL CREATIONS

Canadian-Made for Canadian Maids

Ladies' SILK HOSIERY

in all the new shades

HOLEPROOF & MONARCH KNIT

SILK FIBRE FROM 49c UP

PURE SILK FROM \$1.00 UP

GET YOUR SPRING AND

SUMMER NEEDS NOW

BUY THE NEW "KEWPIE"

STOCKING FOR CHILDREN

Black, white, chestnut.

Correct for the Wee Ones.

Fine finish.



PATTERN & DESIGN
is provided for the
BUTTERICK DESIGN
including Pattern and Instructions
for making Flowers

Swift, Sons & Co.

Housecleaning Time's Here !

Have you seen the new Wallpaper ? We have it at right prices. Call in and let us tell you what it will cost to paper that room. We have all prices from 10c a roll to 50c a roll. The newest designs.

P. DODDS & SON

"WATFORD'S BUSY STORE"

More Money for Your CREAM

THE STRATHROY CREAMERY

WILL OPEN A BRANCH IN WATFORD NEXT WEEK

CREAM WILL BE RECEIVED—WEIGHED—TESTED & PAID FOR.

PREMIUM Paid for First Grade Cream.

BUYING DAYS -- WEDNESDAYS & SATURDAYS

Try this Cream Selling Method—It is your opportunity.

PLACE---Next to Prentiss' Tailor Shop.

Sell your next can to Strathroy Creamery. We make special grade

butter and we need your cream. You need the price we pay.

FIRST DAY MAY 16, 1923.

TRY US NOW

Spring Housecleaning Days

After your cleaning, look over your furniture and see what you really need for the summer. An extra Bed, or a Couch, Davenport or Chesterfield another Chair or Rocker, or a Fern Stand, Floor Lamp, Hall Mirror---

in fact anything and everything in Home Furnishings, we have it in stock or will get it for you.

HARPER BROS.

FINE FURNITURE WATFORD, ONTARIO UNDERTAKERS
MUSICAL INSTRUMENTS

J. W. McConkey

Cleaning and Pressing

Dyeing and Repairing

Gents' Suits Pressed 75c, Sponged and Pressed \$1

SPECIAL for Friday and Saturday

50 Ready-to-wear Suits, Men's and Young Men's sizes\$15 up

RAINCOATS--Watertex \$8.50 up

Boys' and Men's Caps, Regular \$1.75 to \$2.50

Friday and Saturday only, \$1.00, \$1.50, \$1.75

Odd and Work Trousers from \$2.00 up

TUTT ! TUTT ! TUTT !

Tutt Made Clothing

Custom Tailored Guaranteed

\$35 up

SEE OUR TUTT TIES

J. W. McCONKEY

"The Small Store with the Big Bargains"

SOUTH END

SATURDAY SPECIALS

Neilson's Chocolates

REGULAR 60c per lb. 49c

SATURDAY ONLY..... 49c

6 Good Cigars for 25c

GET YOUR

SMOKES HERE

LOVELL'S

BAKERY & CONFECTIONERY

W-O-O-L

Prices are Higher

Call Alex. M. Stewart at Ailsa Craig, or take to Geo. Shirley, Watford, who will pay cash.

We collect your wool, weigh on your own scales, and pay highest cash price, within fifteen miles radius of Watford.

Alex. M. Stewart

R.R. NO. 1 AILSA CRAIG

Phone 32 r 33.

MARY

M

AI

UNDI

The

after con

Monday

Tuesday

Wednes

Thursda

Friday,

Saturday

This is

leading citi

played Two

MAY 24

Colored

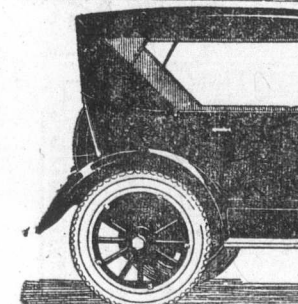
ADMISSION 25c

DON'T FORGET

DEATH OF MRS. MARY

MATHEWS

Mrs. Mary Mathews relict of late Robert Mathews, passed away the residence of her daughter,



Blue

\$250 less than

NOTEWORTHY FEATURES OF THIS BEAUTIFUL CAR

Unusual Leg-room. Wide Doors. Nickel Trimmings. High Grade Top. Best Quality Curtains. Rugged Construction. Triple Springs. Beautiful Blue Bird Body, with finest quality Upholstery to match.

TOURING CAR ONLY f.o.b. factory \$985. Taxes extra

WILLIAMS B

WATFORD