

**NEW ARRIVALS**

**JULY 9th.**

**Can. Table Butter—1s & 2s**  
**P. E. I. Potatoes—90s**  
**Egyptian Onions—112s**  
**Valencia Onions—cases**  
**Oregon Apples—boxes**  
**California Oranges—21¢**  
**Canadian Cheese**  
**"Robin Hood" & "Purity"**

**GEO. NEAL**

Limited. Water St. East.  
 Beck's Cove Phone 264 Phone 17

**"STANYL"**

(DISINFECTANT FLUID)

Non-caustic and perfectly soluble with water, forming a milky, opalescent mixture which will remain without separation.  
 Contains 16-17 p.c. Tar Acids.

FORMULA:  
 By special arrangement with Messrs. H. E. Stevenson & Co., Manufacturing Chemists, London, England. Contractors to H. M. Government.  
 Established 1880.  
 Awards: London, Calcutta, Chicago, Vienna.  
**THE STANDARD MFG. CO., LIMITED.**  
 ST. JOHN'S, NEWFOUNDLAND.

**Grape Fruit**

**EXTRA QUALITY—84c. DOZEN.**  
 20 CASES JUST IN.

- 25 Cases CALIFORNIA ORANGES.
  - 20 Cases VALENCIA ORANGES.
  - 25 Cases VALENCIA ONIONS.
  - 15 Cases DESSICATED COCONUT.
  - 40 Cases HARTLEY'S MARMALADE
  - 1 & 2 lb. Jars & 7 lb. tins.
  - 5 Sacks TAPIOCA.
  - 5 Sacks SAGO.
  - 6 Cases LYLE'S GOLDEN SYRUP—1's and 2's.
  - 5 Gross BIRD'S CUSTARD POWDER.
  - 5 Gross BIRD'S EGG POWDER.
  - 1 Gross BIRD'S GINGER BEER POWDER.
  - 7 Gross SOUTHWELL'S LEMON CRYSTALS.
- LOWEST PRICES.**

**STEERS, Ltd.**

GROCERY DEPARTMENT.

**BUY—WEAR—USE**  
**A FISH BRAND REFLEX SLICKER**

Call upon it any rainy day to keep you dry and warm. You will never be disappointed in its worth and service. Backed by a record of 87 years' manufacture. What more can be said?

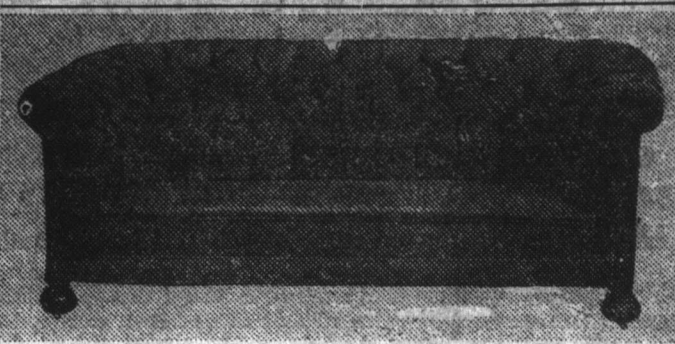
Satisfaction guaranteed



**A. J. TOWER CO.**  
 BOSTON, MASS.  
 PETERS & SONS, ST. JOHN'S, Agents



**Guaranteed Products!**



Buy Upholstered Furniture that stays upholstered. Don't experiment with Chesterfields and Chairs that have nothing to recommend them but attractive prices. We make all our own frames from the best selected hardwoods and insure a solid foundation to build upon. The springs are manufactured of the best oil tempered Premier Spring Wire. Nothing but the best quality of stuffing materials are used and all work is carefully inspected before it leaves our factory.

**POPE'S**  
**Furniture and Mattress Factory**  
 EST. 1860. PHONE 659  
 GEORGE & WALDEGRAVE STS.  
 June 16, 1911

**EXPERT ADVICE!**

Is what you are entitled to when investing in Life Insurance. I offer it to you freely and gladly. Remember, there is no obligation on your part. Just drop into my office and we will talk the matter over together.

CALL AND SEE ME.  
**CYRIL J. CAHILL,**  
 Manager for Newfoundland.  
**CROWN LIFE INSURANCE COMPANY.**  
 (Head Office: Toronto, Canada).  
 Offices: Law Chambers Duckworth Street.  
 Oct 9, 1911

**PROPHECY and HISTORY**  
 We Can Tell You What  
**GUTTA PERCHA**  
**CORD TIRES**  
 Will Do  
 Out the Man Who Has Used Them Will Tell You Enthusiastically What They Have Done

**GUTTA PERCHA & RUBBER, LIMITED**  
 HEAD OFFICES & FACTORIES, TORONTO

FOR SALE AT  
**J. MCKINLAY'S**  
 WM. DUFF & SONS, Carbonear and at SPARKES & BINDON'S,  
 2 Prescott Street Agents.  
 May 9, 1911

**Bananas and Oranges**

100 BUNCHES BANANAS.  
 100 CASES CALIFORNIA ORANGES.  
 NOW IN STOCK.  
**BURT & LAWRENCE**  
 14 NEW GOWER STREET.  
 June 24, 1911

*Works Marvels*

**Gossages' Magical Soap.**

**HARD WEARING**  
 Made by a Firm of World-wide Reputation for Excellence & Uniformity of Quality  
 WILLIAM GOSSAGE & SONS LTD., WIDNES.

**JOB'S STORES, Ltd.**  
 Agents.

**PLASTERGON**

The World's Best Wood Fibred Wall Board.

There are other brands of Good Wall Board, But None of them are just as good as **PLASTERGON**—(The Quality Board).

Packed in Special Export packages and heavily sized, ready for the painter.

For Permanent Homes, Shops or Office, or for **SUMMER RESIDENCES**, Get in touch with us about **PLASTERGON**.

A large stock on hand, and another car load due to arrive by "Canadian Sapper."

**HORWOOD LUMBER CO. Limited**  
 (Distributors).  
 Wholesale and Retail.  
 15, 81, 100

**CLEAN UP and KEEP CLEAN**

This is what the New Government intends doing. We have been doing this for 25 years, as Cleaning, Pressing and Dyeing is our sole business. We devote our entire time to it and therefore we can give you better satisfaction than you can get elsewhere. Owing to the growth of our business we have had to remove to larger premises on the opposite side of the street (No. 22 opp. A. V. Duffy), which gives us ample room. We use the first flat, shop and showroom; second flat, repairing and pressing rooms; third flat, dyeing and renovating.

We would like you to see some of our work before sending elsewhere; all prices reduced since the New Year. Cleaning Orders given our first and personal attention. A rush job is our specialty. We call for goods and deliver them in two hours, if necessary. Suits Pressed while you wait; a nice dressing room to change in. We can handle over one hundred pressing orders daily. In addition to Cleaning and Pressing, we clean and shape hats.

Gents' Suits Dry Cleaned—Hats Cleaned.  
 Ladies' Costumes Dry Cleaned—Suits Renovated.  
 Ladies' and Gents' Suits Dyed. Blue Serge restored to its original color.

**D. J. FURLONG**  
 CLEANER, PRESSER and DYE WORKER  
 22 New Gower Street. Phone 697.  
 June 24, 1911

**Nfld. Government Railway.**

**FREIGHT NOTICE.**  
**NOTRE DAME BAY STEAMSHIP SERVICE.**  
 Freight for ports of call on the above route, as previously advertised (also Botwood, Brown's Arm and Laurenceton) will be accepted at the Freight Shed to-day, Tuesday, July 8th, up to 5 p.m.

**SOUTH COAST AND FORTUNE BAY STEAMSHIP SERVICE.**  
 Freight for the above route per S.S. PORTIA for the undermentioned ports of call will be accepted at Dock Shed to-day, Tuesday, July 8th, up to 5 p.m. and Wednesday up to noon:

St. Mary's, St. Joseph's, Marystown, Burin, St. Lawrence, Fortune, Grand Bank, Belleoram, St. Jacques, English Harbor, Harbor Breton, Pass Island, Hermitage, Gaultois, Pushrough, Richard's Harbor, Francois, LaHune, Ramea, Burgeo, LaPoile, Rose Blanche, Port aux Basques.

Also for the following points in Fortune Bay, via S.S. WREN:  
 Anderson's Cove, Boxey, Brunette, Bay L'Argent, Conne River, Coomb's Cove, Corbin, English Hr. East, Garnish, Great Hr., Grole, Great Jervais, Head Bay, D'Espoir, Hr. Mille, Jersey Hr., Little Bay East, Little Hermitage Bay, Lally Cove, Milltown, Mose Ambrose, Miller's Passage, North Bay, Point Enracree, Pool's Cove, Raymond, Round Hr., Rencontre (Fortune Bay), St. Albans, Sagona, Seal Cove, Stone's Cove, St. Bernard's, Terrenceville.

N.B.—This freight will be forwarded by S.S. PORTIA and transferred at Belleoram to S.S. WREN.

**PASSENGER NOTICE—S.S. PORTIA.**  
 S.S. PORTIA will leave Dry Dock Wharf, St. John's, 10 a.m. Thursday, July 10th, calling at usual ports en route to Port aux Basques. Ship will then proceed to North Sydney, return to Port aux Basques, and call at same ports en route to St. John's. (Passengers must join ship at St. John's as PORTIA not calling at Argentina).

**Nfld. Government Railway.**

**Nfld. Government Railway.**

**CHANGE IN TRAIN SCHEDULES**  
**ARGENTIA AND PLACENTIA.**  
 Commencing Monday, July 14th, regular 8.45 morning train from St. John's will run through to Argentinia, and return to St. John's 9.15 p.m. daily, except Sundays.

**BRIGUS BRANCH.**  
 Regular morning train connections between St. John's and Carbonear, will be as usual. Passengers will transfer at Brigus Junction for Brigus Branch. Regular night train from St. John's and Carbonear will run daily, except Sunday, as usual. When returning from Carbonear on Mondays, Tuesdays and Thursdays, train will leave Carbonear 11.50 a.m. and arrive at St. John's 4.25 p.m. in order to accommodate passengers arriving at Brigus Junction for points West on these days. Wednesdays, Fridays, Saturday's train will leave Carbonear at 7.50 a.m. as heretofore, arriving at St. John's 12.25 p.m.

**BAY-DE-VERDE BRANCH.**  
 Commencing Saturday, July 12th, regular train leaving St. John's 6 p.m., will connect at Carbonear for Bay-de-Verde Branch, on Saturdays, Mondays and Wednesdays, leaving Carbonear 10.45 p.m. Returning, will leave Grate's Cove 8 a.m. Mondays, Tuesdays, Thursdays, connecting at Carbonear with regular morning train for St. John's, making further connection at Brigus Junction with West-bound express on these days.

**HEART'S CONTENT BRANCH.**  
 Commencing Monday, July 14th, train will leave Heart's Content 8 a.m. daily, except Sunday, and returning, leave Whitbourne 7.50 p.m., arriving Heart's Content 10.50 p.m. Connection will be made at Brigus Junction for St. John's with the Carbonear train on Mondays, Tuesdays, Thursdays, and from St. John's to Heart's Content on West-bound express, Tuesdays, and Thursdays. Connection will also be made with the Humber Special train leaving St. John's 5.00 p.m. on Mondays.

**Nfld. Government Railway.**

**WE HAVE THEM.**  
**FIREWORKS!**  
 BANG! BANG!! FIZZE!!!  
 for  
**THE EARL HAIG CELEBRATION.**  
 as follows:  
 Stage Fire, assorted Colours. Coloured Mines. Firecrackers, Sparklers, Torpedoes. Boxes of assorted Fireworks. Triangles, 6-oz. and up. Red Torches Roman Candles, 4 Ball to 20 Ball. Sky Rockets, 1-oz. to 2 lb. Sky Rockets, Special Coloured, 1 and 2 lb.

We have a limited supply—Buy to-day.

**S. E. GARLAND**  
 Leading Bookseller & Stationer, 177-9 Water Street.  
 m.w.f.11